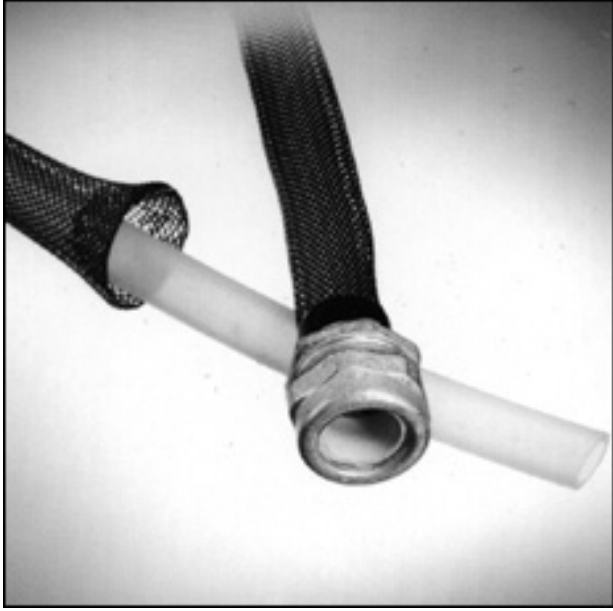


# ICO-FLEX EXPANDABLE SLEEVINGS



- LIGHT WEIGHT
- FLEXIBLE
- EASY TO INSTALL
- ABRASION RESISTANT
- REMOVABLE FOR REPAIR
- OPERATING TEMPERATURE TO 250°F
- U/L RECOGNIZED

ICO-FLEX is a light weight, self-fitting, polyester, monofilament sleeving, designed to provide 360° protection for all configurations of wire harnesses and cable assemblies. ICO-FLEX expandable sleeving adjusts to irregular surfaces and contours, providing abrasion resistance and protection with a minimum of bulk and weight.

## Installing ICO-FLEX Expandable Sleeving:

### Step 1

Turn end inward to form large opening or "Fish Mouth". Slide over end fitting.



### Step 2

Push Expandable Sleeving over cable bundles and fittings. Pull-down to fit contours.



### Step 3

Expandable Sleeve becomes a snug, form fitting cover to protect the finished product.



- FLAME-RETARDANT AND ZERO HALOGEN SLEEVINGS' ARE IDENTIFIED WITH COLORED TRACERS.
- NON FLAME-RETARDANT SLEEVING IS A SOLID COLOR.

FLAME RETARDANT CAT. #-SIZE	ZERO HALOGEN CAT. #- SIZE	NON-FLAME RETARDANT CAT. #-SIZE	NOMINAL ID (INCHES)	SIZE RANGE (INCHES)	APPROX. WEIGHT (LBS./100ft.)	STANDARD SPOOLS OCCASIONAL RANDOM LENGTHS (ft.)
XPF-1/8	ZH-XPF- 1/8	XPNF-1/8	1/8	3/32 - 1/8	0.17	100, 1,000
XPF-1/4	ZH-XPF- 1/4	XPNF-1/4	1/4	1/8 - 3/8	0.25	100, 1,000
XPF-3/8	ZH-XPF- 3/8	XPNF-3/8	3/8	5/32 - 5/8	0.50	100, 500
XPF-1/2	ZH-XPF- 1/2	XPNF-1/2	1/2	1/4 - 3/4	0.75	100, 500
XPF-3/4	ZH-XPF- 3/4	XPNF-3/4	3/4	1/2 - 1- 1/4	1.25	100, 250
XPF-1-1/4	ZH-XPF-1- 1/4	XPNF-1-1/4	1-1/4	3/4 - 1- 1/2	1.65	100, 250
XPF-1-3/4	ZH-XPF-1- 3/4	XPNF-1-3/4	1-3/4	1-1/4 - 2- 1/2	2.75	100, 200
XPF-2	ZH-XPF-2	XPNF-2	2	1-1/2 - 3	3.35	50, 100
XPF-2-1/2	ZH-XPF-2- 1/2	XPNF-2-1/2	2-1/2	1-3/4 - 3- 1/2	4.65	50, 100

Colors: Black, Natural

---