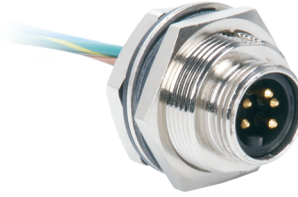


5 and 6-Wire *minifast*® Receptacles, Back Panel Mount

- Male Receptacles
- NEMA 1, 3, 4, 6P and IEC IP 68 Protection
- 600 V, 8 A



Drawing Number	Part Number	Lead Specs.	Features	Pinout
<p>13</p> <p>RSFP ..</p>	RSFP 50-*M	UL, CSA 5x18 AWG 105°C	<i>M30x1.5 Threads, Standard Duty</i>	<ol style="list-style-type: none"> 1. BK 2. BU 3. GN/YE 4. BN 5. WH
	RSFP 511-*M	UL, CSA 5x18 AWG 105°C	<i>Automotive Color Code, M30x1.5 Threads</i>	
	RSFP 55-*M	UL, CSA 5x16 AWG 105°C	<i>Automotive Color Code, M30x1.5 Threads</i>	
	RSFP 56-*M	UL, CSA 5x16 AWG 105°C	<i>M30x1.5 Threads, Heavy Duty</i>	<ol style="list-style-type: none"> 1. WH 2. RD 3. GN 4. OG 5. BK
	RSFP 61-*M	UL, CSA 6x18 AWG 105°C	<i>M30x1.5 Threads, Standard Duty</i>	
	RSFP 66-*M	UL, CSA 6x16 AWG 105°C	<i>M30x1.5 Threads, Heavy Duty</i>	

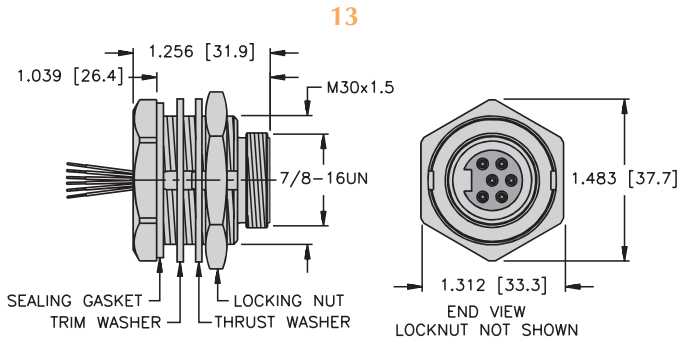
See page E57 for dimensional drawings.

Standard cable length is 0.3 Meters. Consult factory for other lengths.

Standard housing material is nickel plated cast zinc.. "RSFP .."; "RSFPV .." indicates 316 stainless steel housing (leads only).

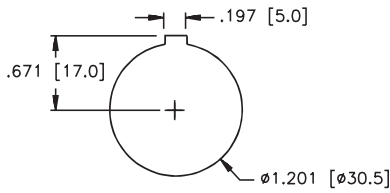
To specify PVC jacketed cable, add "/S717" to the end of the part number.

minifast® 16 AWG Back Panel Mount Male and Female Receptacles

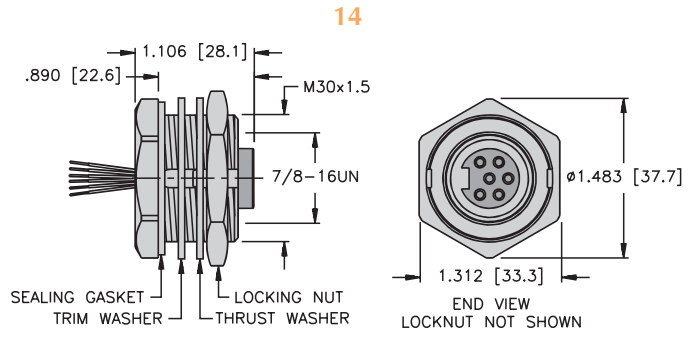


RSFP ..

Page E75 - E76

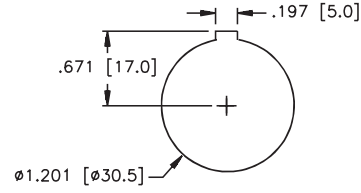


RSFP Cutout



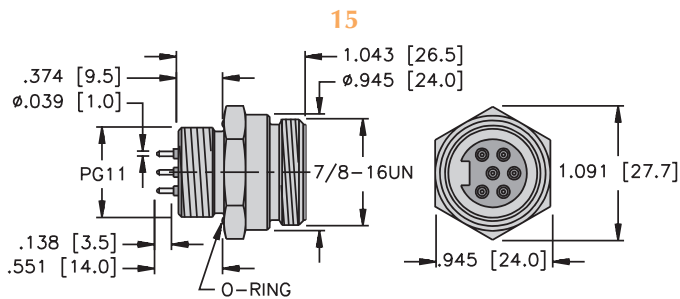
RKFP ..

Page E77 - E78



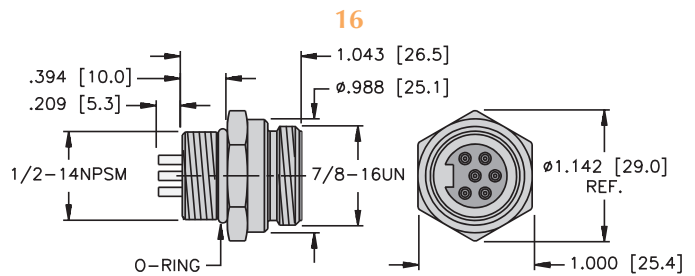
RKFP Cutout

minifast® Front PCB Mount Male and Female Receptacles



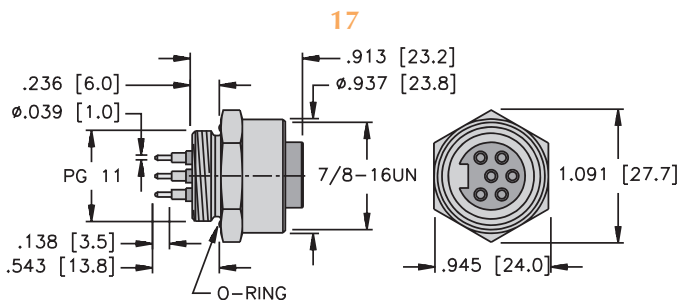
RSF ..PCB

Page E79



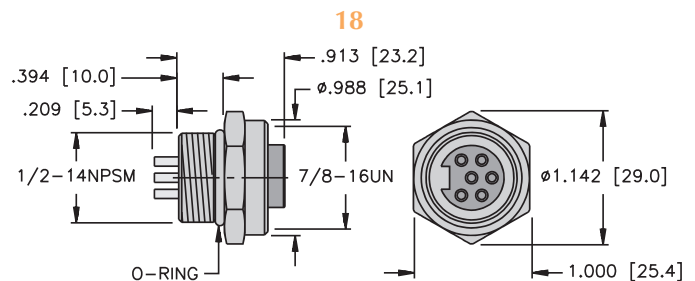
RSFL ..

Page E79



RKF ..PCB

Page E80



RKFL ..

Page E80