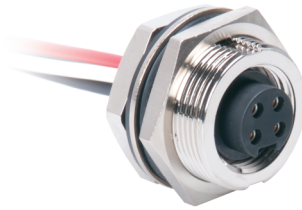
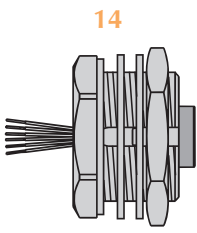
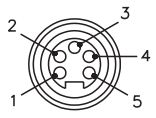
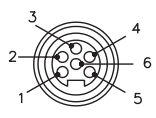


## 5 and 6-Wire *minifast*® Receptacles, Back Panel Mount

- Female Receptacles
- NEMA 1, 3, 4, 6P and IEC IP 68 Protection
- 600 V, 8 A



Drawing Number	Part Number	Lead Specs.	Features	Pinout
 <p>14 RKFP ..</p>	RKFP 50-*M	UL, CSA 5x18 AWG 105°C	<i>M30x1.5 Threads, Standard Duty</i>	<ol style="list-style-type: none"> <li>1. BK</li> <li>2. BU</li> <li>3. GN/YE</li> <li>4. BN</li> <li>5. WH</li> </ol>
	RKFP 511-*M	UL, CSA 5x18 AWG 105°C	<i>Automotive Color Code, M30x1.5 Threads</i>	
	RKFP 55-*M	UL, CSA 5x16 AWG 105°C	<i>Automotive Color Code, M30x1.5 Threads</i>	
	RKFP 56-*M	UL, CSA 5x16 AWG 105°C	<i>M30x1.5 Threads, Heavy Duty</i>	<ol style="list-style-type: none"> <li>1. WH</li> <li>2. RD</li> <li>3. GN</li> <li>4. OG</li> <li>5. BK</li> </ol>
	RKFP 61-*M	UL, CSA 6x18 AWG 105°C	<i>M30x1.5 Threads, Standard Duty</i>	
	RKFP 66-*M	UL, CSA 6x16 AWG 105°C	<i>M30x1.5 Threads, Heavy Duty</i>	

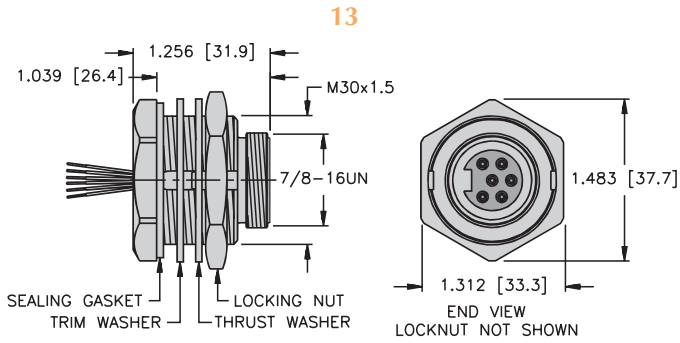
See page E57 for dimensional drawings.

Standard cable length is 0.3 Meters. Consult factory for other lengths.

Standard housing material is nickel plated cast zinc.. "RKFP .."; "RKFPV .." indicates 316 stainless steel housing (leads only).

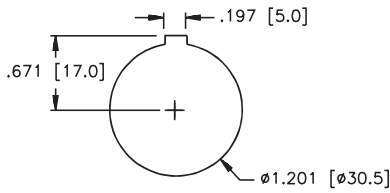
To specify PVC jacketed cable, add "/S717" to the end of the part number.

**minifast® 16 AWG Back Panel Mount Male and Female Receptacles**

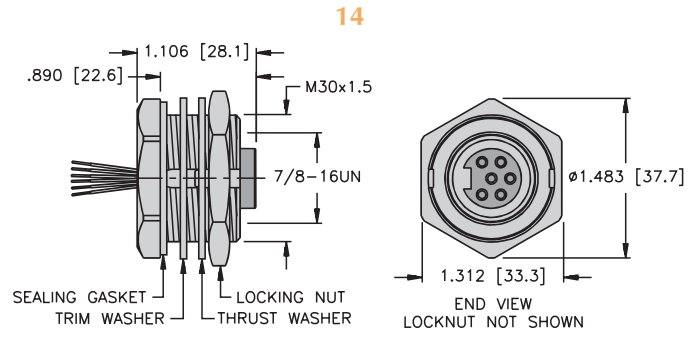


**RSFP ..**

**Page E75 - E76**

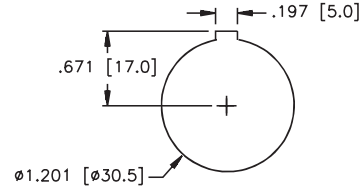


**RSFP Cutout**



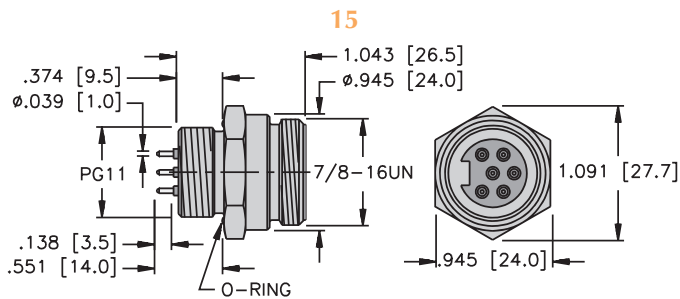
**RKFP ..**

**Page E77 - E78**



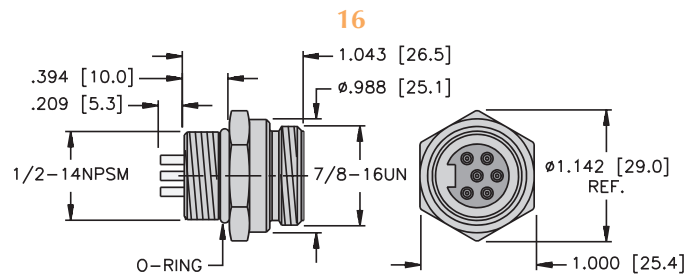
**RKFP Cutout**

**minifast® Front PCB Mount Male and Female Receptacles**



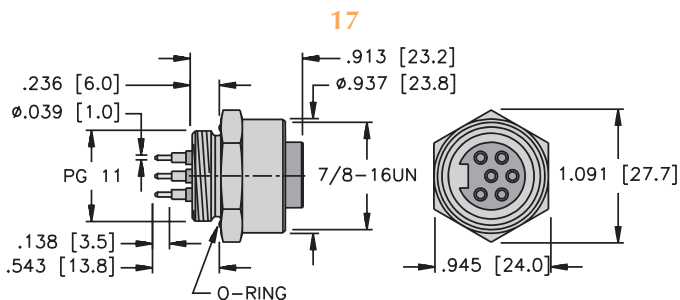
**RSF ..PCB**

**Page E79**



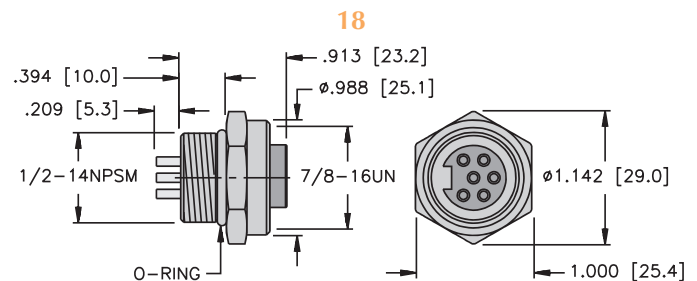
**RSFL ..**

**Page E79**



**RKF ..PCB**

**Page E80**



**RKFL ..**

**Page E80**