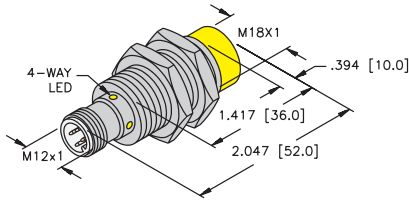
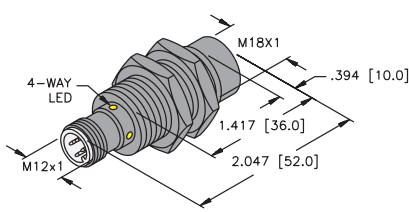


Inductive Sensors

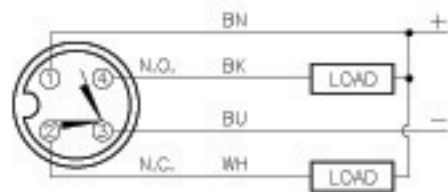


Housing Style	Part Number	ID Number	Features	Sensing Range (mm)	Output
18 mm - Nonembeddable, eurofast® Connection 	Ni 8-M18-AD4X-H1141	T4414700		8	2-Wire DC
	Ni 8-M18-AD4X-H1144	T4411288		8	
	Ni 14-M18-AD4X-H1141	T4417241	<i>Ext. Range</i>	14	
	Ni 14-M18-AD4X-H1144	T4417290	<i>Ext. Range</i>	14	
	Ni 8-M18-AN6X-H1141	T4614800		8	3-Wire DC NPN
	Ni 10-EM18WD-AN6X-H1141	M4653433	<i>Washdown</i>	10	
	Ni 10-M18-AN6X-H1141	T4614892		10	
	Ni 10-M18WD-AN6X-H1141	M4653440	<i>Washdown</i>	10	
	Ni 12U-EM18-AN6X-H1141	M1645350	<i>Uprox</i>	12	
	Ni 12U-EM18-AN6X2-H1141	M1645355	<i>Uprox</i>	12	
	Ni 15U-EM18WD-AN6X-H1141	M1634835	<i>Uprox Washdown</i>	15	
	Ni 12U-M18-AN6X-H1141	M1645150	<i>Uprox</i>	12	
	Ni 12U-M18-AN6X2-H1141	M1645155	<i>Uprox</i>	12	
	Ni 14-M18-AN6X-H1141	T4611410	<i>Ext. Range</i>	14	
	Ni 8-M18-AP6X-H1141	T4614700		8	3-Wire DC PNP
	Ni 10-EM18WD-AP6X-H1141	M4653419	<i>Washdown</i>	10	
	Ni 10-M18-AP6X-H1141	T4641291		10	
	Ni 12U-EM18-AP6X-H1141	M1645340	<i>Uprox</i>	12	
	Ni 12U-EM18-AP6X2-H1141	M1645345	<i>Uprox</i>	12	
	Ni 12U-M18-AP6X-H1141	M1645140	<i>Uprox</i>	12	
Ni 12U-M18-AP6X2-H1141	M1645145	<i>Uprox</i>	12		
Ni 14-M18-AP6X-H1141	T4611400	<i>Ext. Range</i>	14		
Ni 8-M18-VN4X-H1141	T1571900	<i>Comp. Outputs</i>	8	4-Wire DC NPN	
Ni 14-M18-VN4X-H1141	T4590603	<i>Ext. Range</i>	14		
Ni 8-M18-VP4X-H1141	T1561900	<i>Comp. Outputs</i>	8	4-Wire DC PNP	
Ni 14-M18-VP4X-H1141	T4590602	<i>Ext. Range</i>	14		
Ni 10-M18-Y1X-H1141	M4015300		10	2-Wire NAMUR	
Ni 12U-M18-ASIX-H1140	M1901005	<i>Uprox</i>	12	2-Wire ASI-BUS	
18 mm - Nonembeddable, eurofast connection, Teflon Coated 	Ni 12U-MT18-AN6X-H1141	M1645250	<i>Uprox</i>	12	3-Wire DC NPN
	Ni 12U-MT18-AP6X-H1141	M1645240	<i>Uprox</i>	12	3-Wire DC PNP
	Ni 12U-MT18-AP6X2-H1141	M1645245	<i>Uprox</i>	12	
	Ni 12U-MT18H-AP6X-H1141/S1589	M1645292	<i>weldguard® Uprox</i>	12	
	Ni 12U-MT18H-AP6X2-H1141/S1589	M1645293	<i>weldguard Uprox</i>	12	

Voltage	Switching Freq. (Hz)	Operating Current (mA)	Operating Temp. (°C)	Protection	Housing	Face	Power LED	Output LED	Mating Cordset	Wiring Diagram #	Wiring Diagrams
10-65 VDC	500	≤100	-25 to +70	IP 67	CPB	PA 12	N/A	YE	RK 4.2T-*	1	<p>Diagram 1</p>
	500	≤100	-25 to +70	IP 67	CPB	PA 12	N/A	YE	RK 4.2T-*/S674	2	
	500	≤100	-25 to +70	IP 67	CPB	PA 12	N/A	YE	RK 4.2T-*	1	
	500	≤100	-25 to +70	IP 67	CPB	PA 12	N/A	YE	RK 4.2T-*/S674	2	
10-30 VDC	1000	≤200	-25 to +70	IP 67	CPB	PA 12	N/A	YE	RK 4T-*	3	<p>Diagram 2</p> <p>Diagram 3</p> <p>Diagram 4</p> <p>Diagram 5</p> <p>Diagram 6</p>
	500	≤200	-25 to +85	IP 68, IP 69K	SS	PVDF	N/A	YE	RK 4T-*	3	
	1000	≤200	-25 to +70	IP 67	CPB	PA 12	N/A	YE	RK 4T-*	3	
	1000	≤200	-25 to +70	IP 67	CPB	PA 12	N/A	YE	RK 4T-*	3	
	2000	≤200	-30 to +85	IP 68	SS	PA 12	N/A	YE	RKY 4T-*	3	
	2000	≤200	-30 to +85	IP 68	SS	PA 12	GN	YE	RKY 4T-*	3	
	1000	≤200	-30 to +85	IP 68, IP 69K	SS	PVDF	N/A	YE	RK 4T-*	3	
	2000	≤200	-30 to +85	IP 67	CPB	PA 12	N/A	YE	RK 4T-*	3	
	2000	≤200	-30 to +85	IP 67	CPB	PA 12	GN	YE	RK 4T-*	3	
	500	≤200	-25 to +70	IP 67	CPB	PA 12	N/A	YE	RK 4T-*	3	
10-30 VDC	1000	≤200	-25 to +70	IP 67	CPB	PA 12	N/A	YE	RK 4T-*	4	<p>Diagram 7</p> <p>Diagram 8</p>
	500	≤200	-25 to +85	IP 68, 69K	SS	PVDF	N/A	YE	RK 4T-*	4	
	1000	≤200	-25 to +70	IP 67	CPB	PA 12	N/A	YE	RK 4T-*	4	
	2000	≤200	-30 to +85	IP 68	SS	PA 12	N/A	YE	RKY 4T-*	4	
	2000	≤200	-30 to +85	IP 68	SS	PA 12	GN	YE	RKY 4T-*	4	
	2000	≤200	-30 to +85	IP 67	CPB	PA 12	N/A	YE	RK 4T-*	4	
	2000	≤200	-30 to +85	IP 67	CPB	PA 12	GN	YE	RK 4T-*	4	
	500	≤200	-25 to +70	IP 67	CPB	PA 12	N/A	YE	RK 4T-*	4	
10-65 VDC	1000	≤200	-25 to +70	IP 67	CPB	PA 12	N/A	YE	RK 4.4T-*	5	<p>Diagram 9</p>
	1000	≤200	-25 to +70	IP 67	CPB	PA 12	N/A	YE	RK 4.4T-*	5	
10-65 VDC	1000	≤200	-25 to +70	IP 67	CPB	PA 12	N/A	YE	RK 4.4T-*	6	<p>Diagram 10</p>
	1000	≤200	-25 to +70	IP 67	CPB	PA 12	N/A	YE	RK 4.4T-*	6	
5-30 VDC	500	Remote	-25 to +70	IP 67	CPB	PA 12	N/A	YE	RK 4.21T-*	7	<p>Diagram 11</p>
18-33 VDC	200	N/A	-30 to +85	IP 68	CPB	PA 12	N/A	YE	RKC 254-*/M	8	<p>Diagram 12</p>
10-30 VDC	2000	≤200	-30 to +85	IP 67	TC	TC	N/A	YE	RK 4T-*	3	<p>Diagram 13</p>
10-30 VDC	2000	≤200	-30 to +85	IP 67	TC	TC	N/A	YE	RK 4T-*	4	<p>Diagram 14</p>
	2000	≤200	-30 to +85	IP 67	TC	TC	GN	YE	RK 4T-*	4	
	2000	≤200	-30 to +85	IP 67	TC	WG	N/A	YE	RKG 4T-*/S600	4	
	2000	≤200	-30 to +85	IP 67	TC	WG	GN	YE	RKG 4T-*/S600	4	

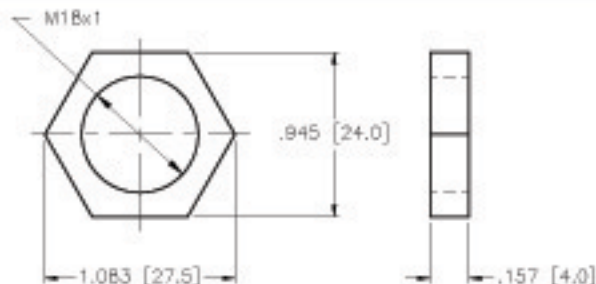
* Length in meters.

WIRING DIAGRAM



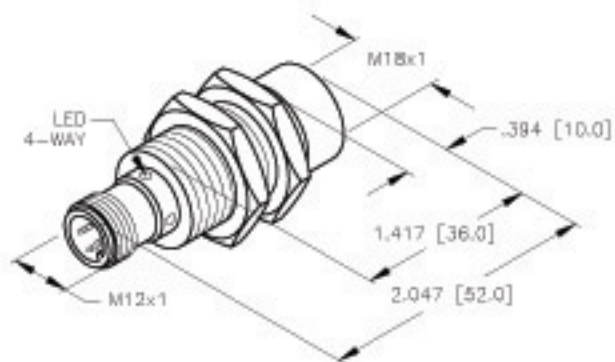
OUTPUT: VN4X

LOCKNUT LN-M18



SPECIFICATIONS

OPERATING VOLTAGE	10-65 V DC (SHORT-CIRCUIT PROTECTED)
RIPPLE	≤ 10%
HYSTERESIS (DIFFERENTIAL TRAVEL)	3-15% (5% TYPICAL)
VOLTAGE DROP ACROSS CONDUCTING SENSOR	≤ 1.8 V at 200 mA
OUTPUT FUNCTION	COMPLEMENTARY OUTPUT ONE N.O., ONE N.C. (SPST)
TTL COMPATIBLE	NO
SHORT-CIRCUIT PROTECTED	YES
TRIGGER CURRENT FOR OVERLOAD PROTECTION	≥ 220 mA
CONTINUOUS LOAD CURRENT	≤ 200 mA
OFF-STATE (LEAKAGE) CURRENT	< 10 μ A
NO-LOAD CURRENT	4.0-9.5 mA
TIME DELAY BEFORE AVAILABILITY	≤ 8 ms
POWER-ON EFFECT	Per IEC 947-5-2
REVERSE POLARITY PROTECTION	INCORPORATED
WIRE-BREAK PROTECTION	INCORPORATED
TRANSIENT PROTECTION	Per EN 60947-5-2
OPERATING TEMPERATURE	-25°C to +70°C (-13°F to +158°F)
ENCLOSURE	MEETS NEMA 1, 3, 4, 6, 13 AND IEC IP67
SHOCK	30 g, 11 ms
VIBRATION	95 Hz, 1 mm AMPLITUDE (IN ALL 3 PLANES)
LED FUNCTION	YELLOW: OUTPUT ENERGIZED
RATED OPERATING DISTANCE(S _{RI})	8mm = .315" (NOMINAL)
SWITCHING FREQUENCY	1000 Hz
REPEATABILITY	≤ 2% of RATED OPERATING DISTANCE
SHIELDED	NO



NOTE: ALL TOLERANCES ±1.0 mm.

SOURCE DRAWING - FOR REFERENCE ONLY

RELATED DOCUMENTS 1. 2. 3. 4.	3RD ANGLE PROJECTION 	THIS DRAWING IS PROPERTY OF TURCK INC. USE OF THIS DOCUMENT WITHOUT WRITTEN PERMISSION IS PROHIBITED.		TURCK INC High Technology Sensors and Automation Controls	
	MATERIAL	TOLERANCES UNLESS OTHERWISE SPECIFIED	DRAWN IK		
FINISH	±0.0394 in [±1.00 mm]	UNIT OF MEASUREMENT INCH [MILLIMETER]	SCALE 1 = 1.5	IDENTIFICATION NO. T1571900	REV A
A DRAWING RELEASE IK 03/09/00 T3437		DO NOT SCALE THIS DRAWING		FILE: T1571900	SHEET 1 OF 1
REV	DESCRIPTION	BY	DATE	EDD NO.	