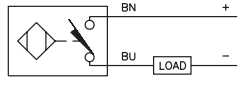
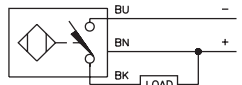
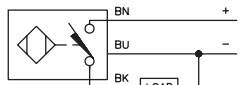


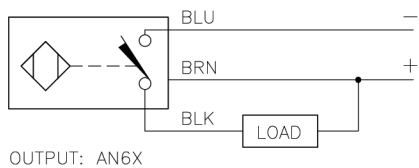
Inductive Sensors



Housing Style	Part Number	ID Number	Features	Sensing Range (mm)	Output
8 mm - Nonembeddable, Miniature Threaded Barrel, Potted-In Cable 	Ni 4-EG08K-AG41X	S4561010	<i>Short Barrel</i>	4	2-Wire DC
	Ni 3-EG08K-AN6X	S4669700	<i>Short Barrel</i>	3	3-Wire DC NPN
	Ni 3-EG08K-AP6X	S4669600	<i>Short Barrel</i>	3	3-Wire DC PNP
	Ni 3-EG08K-Y1	S1003700	<i>Short Barrel</i>	3	2-Wire DC NAMUR
8 mm - Nonembeddable, Miniature Threaded Barrel, Potted-In Cable 	Ni 4-EG08-AG41X	S4561000		4	2-Wire DC
	Ni 3-EG08-AN6X	S4602840		3	3-Wire DC NPN
	Ni 3-EG08-AN6X/S1589	S4602888	<i>weldguard</i>	3	
	Ni 3-EG08-AN7X	S4669759	<i>TTL Compatible</i>	3	
	Ni 4U-EG08-AN6X	S4600610	<i>Uprox</i>	4	
	Ni 3-EG08-AP6X	S4602740		3	3-Wire DC PNP
	Ni 3-EG08-AP6X/S1589	S4602789	<i>weldguard</i>	3	
Ni 4U-EG08-AP6X	S4600600	<i>Uprox</i>	4		

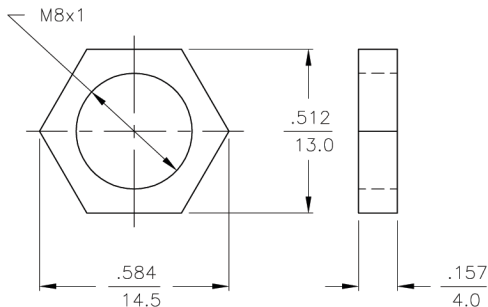
Voltage	Switching Freq. (Hz)	Operating Current (mA)	Operating Temp. (°C)	Protection	Housing	Face	End Cap	Power LED	Output LED	Cable Length/ Cable Mat.	Wiring Diagram #	Wiring Diagrams
10-65 VDC	1000	≤100	-25 to +70	IP 67	SS	PA 12	TROG	N/A	YE	2M/PUR	1	Diagram 1
10-30 VDC	3000	≤150	-25 to +70	IP 67	SS	PA 12	TROG	N/A	YE	2M/PUR	2	
10-30 VDC	3000	≤150	-25 to +70	IP 67	SS	PA 12	TROG	N/A	YE	2M/PUR	3	Diagram 2
5-30 VDC	5000	Remote	-25 to +70	IP 67	SS	PA 12	TROG	N/A	N/A	2M/PVC	4	
10-65 VDC	1000	≤100	-25 to +70	IP 67	SS	PA 12	TROG	N/A	YE	2M/PUR	1	Diagram 3
10-30 VDC	3000	≤150	-25 to +70	IP 67	SS	PA 12	TROG	N/A	YE	2M/PUR	2	
	3000	≤150	-25 to +70	IP 67	SS	WG	TROG	N/A	YE	2M/PUR	2	
	2000	≤150	-25 to +70	IP 67	SS	PA 12	TROG	N/A	YE	2M/PUR	2	
	2000	≤150	-30 to +85	IP 68	SS	PA 12	TROG	N/A	YE	2M/PUR	2	
10-30 VDC	3000	≤150	-25 to +70	IP 67	SS	PA 12	TROG	N/A	YE	2M/PUR	3	Diagram 4
	3000	≤150	-25 to +70	IP 67	SS	WG	TROG	N/A	YE	2M/PUR	3	
	2000	≤150	-30 to +85	IP 68	SS	PA 12	TROG	N/A	YE	2M/PUR	3	

WIRING DIAGRAM



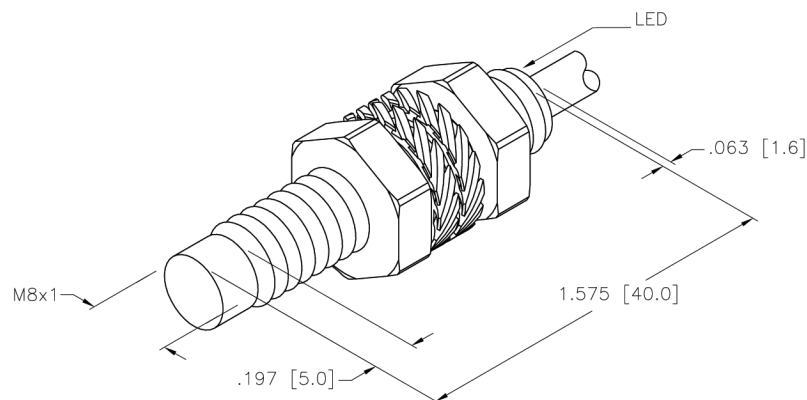
SHORT-CIRCUIT AND OVERLOAD PROTECTED

LOCKNUT LN-M8



SPECIFICATIONS

OPERATING VOLTAGE	10-30 VDC	
RIPPLE	≤ 10%	
DIFFERENTIAL TRAVEL (HYSTERESIS)	3-15% (5% TYPICAL)	
VOLTAGE DROP ACROSS CONDUCTING SENSOR	≤ 1.8 V at 150 mA	
OUTPUT FUNCTION	NORMALLY OPEN 3-WIRE DC SELF-CONTAINED	
TTL COMPATIBLE	NO	
SHORT-CIRCUIT PROTECTED	YES	
TRIGGER CURRENT FOR OVERLOAD PROTECTION	≥ 180 mA	
CONTINUOUS LOAD CURRENT	≤ 150 mA	
LEAKAGE (OFF-STATE) CURRENT	< 10µ A	
NO-LOAD CURRENT	8.5-13 mA	
TIME DELAY BEFORE AVAILABILITY	≤ 8 ms	
POWER-ON EFFECT PROTECTION	INCORPORATED	
REVERSE POLARITY PROTECTION	INCORPORATED	
WIRE-BREAK PROTECTION	INCORPORATED	
PROTECTION AGAINST TRANSIENTS	EN 60947-5-2	
OPERATING TEMPERATURE	-25°C to +70°C (-13°F to +158°F) W/ 10% TEMP. DRIFT	-30°C to +85°C (-13°F to +185°F) W/ 15% TEMP. DRIFT
ENCLOSURE	MEETS NEMA 1, 3, 4, 6, 13 AND IEC IP67	
SHOCK	30 g, 11 ms	
VIBRATION	55 Hz, 1 mm AMPLITUDE (IN ALL 3 PLANES)	
LED FUNCTION	YELLOW: OUTPUT ENERGIZED	
SENSING RANGE	4.0 mm = .160" (NOMINAL)	
SWITCHING FREQUENCY	2000 Hz	
REPEATABILITY	≤ 2% of NOMINAL SENSING RANGE	
EMBEDDABLE (SHIELDED)	NO	



RELATED DOCUMENTS

- 1.
- 2.
- 3.
- 4.

3RD ANGLE PROJECTION



THIS DRAWING IS PROPERTY OF TURCK INC. USE OF THIS DOCUMENT WITHOUT WRITTEN PERMISSION IS PROHIBITED.

TURCK INC
High Technology Sensors and Automation Controls

MATERIAL
STAINLESS STEEL

TOLERANCES UNLESS OTHERWISE SPECIFIED

.X ±0.02
.XX ±0.01
.XXX ±0.005
ANGLES ±1°

ALL MILLIMETER DIMENSIONS ARE REFERENCE ONLY

DRFT JBJ
DSGN

DATE 3/18/97
SCALE 1=.7

DESCRIPTION

Ni4U-EG08-AN6X

UNIT OF MEASUREMENT
INCH [MILLIMETER]

IDENTIFICATION NO.

S4600610

REV

B

B UPDATE TO NEW TITLE BLOCK RDS 11/04/02 5504

REV DESCRIPTION BY DATE ECO NO.

DO NOT SCALE THIS DRAWING

FILE: S4600610

SHEET 1 OF 1