

Inductive Sensors



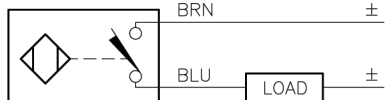
Housing Style	Part Number	ID Number	Features	Sensing Range (mm)	Output
30 mm - Nonembeddable, Potted-In Cable 	Ni15-M30-AD4X	T4417200		15	2-Wire DC
	Ni20-M30-AD4X	T4466135	<i>Extended Range</i>	20	
	Ni15-M30-AP6X/S100	M4617200	<i>High Temp. 100°C</i>	15	3-Wire DC NPN
	Ni20-M30-AN6X	T4670516	<i>Extended Range</i>	20	
	Ni20U-EM30-AN6X	M1646320	<i>Uprox</i>	20	
	Ni20U-M30-AN6X	M1646120	<i>Uprox</i>	20	
	Ni20-M30-AP6X	T4670511	<i>Extended Range</i>	20	3-Wire DC PNP
	Ni20U-EM30-AP6X	M1646300	<i>Uprox</i>	20	
	Ni20U-M30-AP6X	M1646100	<i>Uprox</i>	20	
	Ni15-M30-VN4X	T1571500	<i>Comp. Outputs</i>	15	4-Wire DC NPN
	Ni20-M30-VN4X	T4590604	<i>Extended Range</i>	20	
	Ni15-M30-VP4X	T1561500	<i>Comp. Outputs</i>	15	4-Wire DC PNP
Ni20-M30-VP4X	T4590605	<i>Extended Range</i>	20		
30 mm - Nonembeddable, Potted-In Cable 	Ni20-EM30WD-AN6X	M4653434	<i>Washdown</i>	20	3-Wire DC NPN
	Ni20-EM30WD-AP6X	M4653423	<i>Washdown</i>	20	3-Wire DC PNP
30 mm - Nonembeddable, Potted-In Cable 	Ni15-EM30D-VP6X/S120	M4617410	<i>High Temp. 120°C</i>	15	3-Wire DC PNP

Voltage	Switching Freq. (Hz)	Operating Current (mA) AC/DC	Operating Temp. (°C)	Protection	Housing	Face	End Cap	Power LED	Output LED	Cable Length/ Cable Mat.	Wiring Diagram #	Wiring Diagrams
10-65 VDC	200	≤100	-25 to +70	IP 67	CPB	PA 12	EPTR	N/A	YE	2M/PVC	1	Diagram 1
	200	≤100	-25 to +70	IP 67	CPB	PA 12	EPTR	N/A	YE	2M/PVC	1	
10-30 VDC	500	≤200	-25 to +100	IP 67	CPB	IRPA	EPTR	N/A	YE	2M/PVC	2	Diagram 2
	500	≤200	-25 to +70	IP 67	CPB	PA 12	EPTR	N/A	YE	2M/PVC	2	
	1500	≤200	-30 to +85	IP 68	SS	PA 12	EPTR	N/A	YE	2M/PVC	2	
	1500	≤200	-30 to +85	IP 67	CPB	PA 12	EPTR	N/A	YE	2M/PVC	2	
10-30 VDC	500	≤200	-25 to +70	IP 67	CPB	PA 12	EPTR	N/A	YE	2M/PVC	3	Diagram 3
	1500	≤200	-30 to +85	IP 68	SS	PA 12	EPTR	N/A	YE	2M/PVC	3	
	1500	≤200	-30 to +85	IP 67	CPB	PA 12	EPTR	N/A	YE	2M/PVC	3	
10-65 VDC	500	≤200	-25 to +70	IP 67	CPB	PA 12	EPTR	N/A	YE	2M/PVC	4	Diagram 3
	500	≤200	-25 to +70	IP 67	CPB	PA 12	EPTR	N/A	YE	2M/PVC	4	
10-65 VDC	500	≤200	-25 to +70	IP 67	CPB	PA 12	EPTR	N/A	YE	2M/PVC	5	Diagram 4
10-65 VDC	500	≤200	-25 to +70	IP 67	CPB	PA 12	EPTR	N/A	YE	2M/PVC	5	
10-30 VDC	1000	≤200	-25 to +85	IP 68, 69K	SS	PVDF	EPTR	N/A	YE	2M/PUR	2	Diagram 4
10-30 VDC	1000	≤200	-25 to +85	IP 68, 69K	SS	PVDF	EPTR	N/A	YE	2M/PUR	3	
10-30 VDC	1000	≤200	-25 to +85	IP 68, 69K	SS	PVDF	EPTR	N/A	YE	2M/PUR	3	Diagram 5
10-30 VDC	1000	≤200	-25 to +120	IP 67	SS	PTFE	PTFE	N/A	YE	2M/PTFE	3	

WIRING DIAGRAM

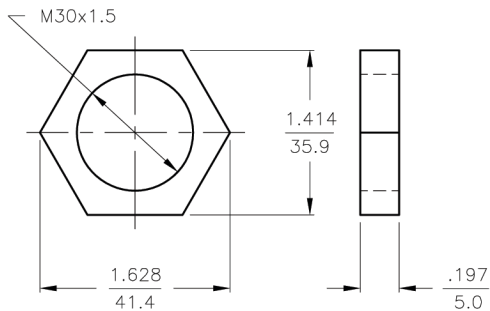
LOCKNUT LN-M30

SPECIFICATIONS

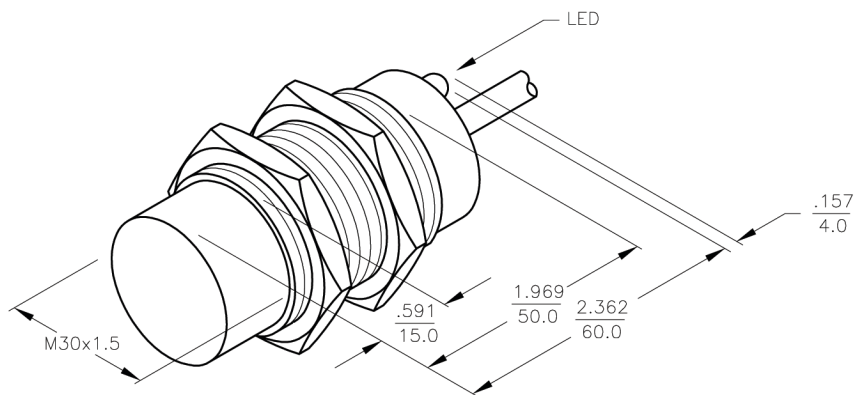


OUTPUT: AD4X

SHORT-CIRCUIT AND OVERLOAD PROTECTED



OPERATING VOLTAGE	10-65 VDC
RIPPLE	≤ 10%
DIFFERENTIAL TRAVEL (HYSTERESIS)	3-15% (5% TYPICAL)
VOLTAGE DROP ACROSS CONDUCTING SENSOR	≤ 5.0 V at 100 mA
OUTPUT FUNCTION	NORMALLY OPEN 2-WIRE DC SELF-CONTAINED
TTL COMPATIBLE	NO
SHORT-CIRCUIT PROTECTED	YES
TRIGGER CURRENT FOR OVERLOAD PROTECTION	≥ 120 mA
MAXIMUM LOAD CURRENT	≤ 100 mA
MINIMUM LOAD CURRENT	≥ 3.0 mA
OFF-STATE (LEAKAGE) CURRENT	≤ 0.8 mA
POWER-ON EFFECT PROTECTION	INCORPORATED
TIME DELAY BEFORE AVAILABILITY	≤ 10 ms
PROTECTION AGAINST TRANSIENTS	PER EN 60947-5-2
OPERATING TEMPERATURE	-25°C to +70°C (-13°F to +158°F)
ENCLOSURE	MEETS NEMA 1, 3, 4, 6, 13 AND IEC IP67
SHOCK	30 g, 11 ms
VIBRATION	55 Hz, 1 mm AMPLITUDE (IN ALL 3 PLANES)
LED FUNCTION	YELLOW: OUTPUT ENERGIZED
RATED OPERATING DISTANCE(Sn)	20 mm = .787" (NOMINAL)
SWITCHING FREQUENCY	500 Hz
REPEATABILITY	≤ 2% of RATED OPERATING DISTANCE
EMBEDDABLE (SHIELDED)	NO



NOTE:

1. THIS SENSOR MAY BE USED AS A SINKING OR SOURCING DEVICE.

RELATED DOCUMENTS		3RD ANGLE PROJECTION		THIS DRAWING IS PROPERTY OF TURCK INC. USE OF THIS DOCUMENT WITHOUT WRITTEN PERMISSION IS PROHIBITED.		 High Technology Sensors and Automation Controls		
1.			TOLERANCES UNLESS OTHERWISE SPECIFIED .X ±0.02 .XX ±0.01 .XXX ±0.005 ANGLES ±1° ALL MILLIMETER DIMENSIONS ARE REFERENCE ONLY	DRFT	CBM	DATE	01/26/00	
2.				DSGN		SCALE	NONE	DESCRIPTION
3.		UNIT OF MEASUREMENT				IDENTIFICATION NO.		REV
4.		INCH [MILLIMETER]				T4466135		A
MATERIAL		COPPER/NICKEL CHROME PLATING		DO NOT SCALE THIS DRAWING		FILE: T4466135		
FINISH						SHEET 1 OF 1		

A	DRAWING RELEASE	CBM	02/04/00	
REV	DESCRIPTION	BY	DATE	ECO NO.