

Inductive Sensors



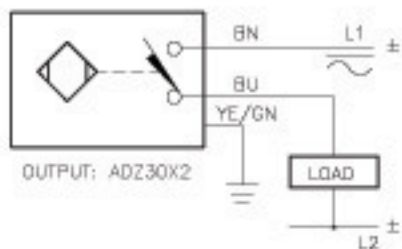
Housing Style	Part Number	ID Number	Features	Sensing Range (mm)	Output
18 mm - Nonembeddable, Partial Threading, Potted-In Cable 	Ni 7-EM18D-VP6X/S120	M4632100	<i>High Temp. 120°C</i>	7	4-Wire DC PNP
18 mm - Nonembeddable, Full Threading, Potted-In Cable 	Ni10-G18K-AN6X	T4671500	<i>Short Barrel</i>	10	3-Wire DC NPN
	Ni10-G18K-AP6X	T4670500	<i>Short Barrel</i>	10	3-Wire DC PNP
	Ni10-G18-Y0	T1006100		10	2-Wire NAMUR
Ni10-G18-Y0X	T4015100		10		
18 mm - Nonembeddable, Full Threading, Potted-In Cable 	Ni10-G18-AN6X	T4641700		10	3-Wire DC NPN
	Ni10-G18-AN7X	T4740700	<i>TTL Compatible</i>	10	
	Ni10-G18-AP6X	T4641600			10
18 mm - Nonembeddable, Full Threading, Potted-In Cable 	Ni14-G18-ADZ30X2	T4205402	<i>Extended Range</i>	14	2-Wire AC/DC Short-Circuit Protected
	Ni10-G18-AZ3X	T4330500		10	2-Wire AC/DC

Output	Switching Freq. (Hz)	Operating Current (mA) VAC/VDC	Operating Temp. (°C)	Protection	Housing	Face	End Cap	Power LED	Output LED	Cable Length/ Cable Mat.	Wiring Diagram #	Wiring Diagrams
10-30 VDC	2000	≤200	-25 to +120	IP 67	SS	PTFE	PTFE	N/A	YE	2M/PTFE	1	<p>Diagram 1</p> <p>Diagram 2</p>
	1000	≤200	-25 to +70	IP 67	CPB	PA 12	EPTR	N/A	YE	2M/PVC	2	<p>Diagram 3</p>
10-30 VDC	1000	≤200	-25 to +70	IP 67	CPB	PA 12	EPTR	N/A	YE	2M/PVC	3	
5-30 VDC	500	Remote	-25 to +70	IP 67	CPB	PA 12	EPTR	N/A	N/A	2M/PVC	4	<p>Diagram 4</p>
	500	Remote	-25 to +70	IP 67	CPB	PA 12	EPTR	N/A	YE	2M/PVC	4	
10-30 VDC	1000	≤200	-25 to +70	IP 67	CPB	PA 12	EPTR	N/A	YE	2M/PVC	2	<p>Diagram 5</p>
	1000	≤150	-25 to +70	IP 67	CPB	PA 12	EPTR	N/A	YE	2M/PVC	2	
10-30 VDC	1000	≤200	-25 to +70	IP 67	CPB	PA 12	EPTR	N/A	YE	2M/PVC	3	
20-250 VAC 10-300 VDC	20	≤400/300	-25 to +70	IP 67	CPB	PA 12	EPTR	N/A	RD	2M/PVC	5	
20-250 VAC 10-300 VDC	20	≤400/300	-25 to +70	IP 67	CPB	PA 12	EPTR	N/A	RD	2M/PVC	5	

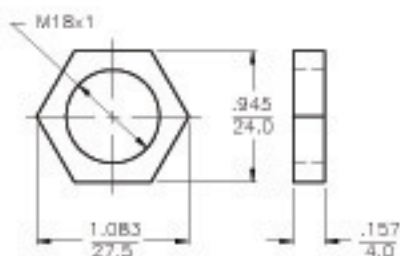
WIRING DIAGRAM

LOCKNUT LN-M18

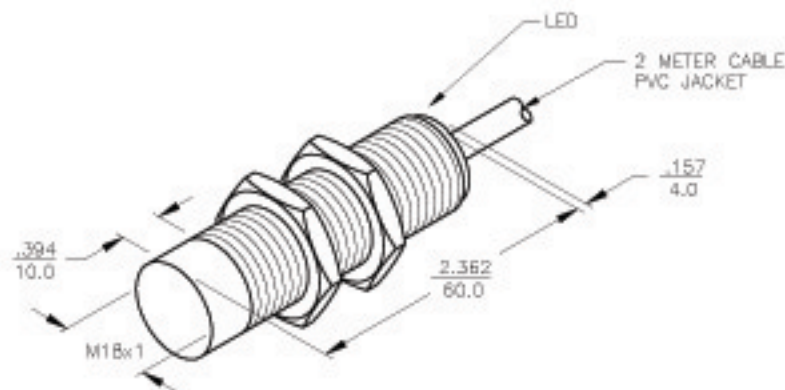
SPECIFICATIONS



SHORT-CIRCUIT AND OVERLOAD PROTECTED



OPERATING VOLTAGE	20-250 VAC, 10-300 VDC
LINE FREQUENCY	40-60 Hz
HYSTERESIS (DIFFERENTIAL TRAVEL)	3-15% (5% TYPICAL)
VOLTAGE DROP ACROSS CONDUCTING SENSOR	≤ 0.0 V at 400 mA
OUTPUT FUNCTION	NORMALLY OPEN 2-WIRE AC/DC SELF-CONTAINED
SHORT-CIRCUIT PROTECTED	YES
TRIGGER CURRENT FOR OVERLOAD PROTECTION	AC: 440 mA, DC: 330 mA
CONTINUOUS LOAD CURRENT	AC: 440 mA, DC: 330 mA
LEAKAGE (OFF-STATE) CURRENT	≤ 1.7 mA
MINIMUM LOAD CURRENT	≥ 3.0 mA
INRUSH CURRENT	≤ 3.0 A
TIME DELAY BEFORE AVAILABILITY	≤ 15 ms
POWER-ON EFFECT PROTECTION	PER IEC 847-5-2
PROTECTION AGAINST TRANSIENTS	PER EN 60947-5-2
OPERATING TEMPERATURE	-25°C to +70°C (-13°F to +158°F)
ENCLOSURE	MEETS NEMA 1, 3, 4, 6, 13 AND IEC IP67
SHOCK	30 g, 11 ms
VIBRATION	55 Hz, 1 mm AMPLITUDE (IN ALL 3 PLANES)
LED FUNCTION	GREEN = POWER ON FLASHING GREEN = SHORT-CIRCUIT WARNING RED = OUTPUT ENERGIZED
SENSING RANGE	14 mm = .551" (NOMINAL)
SWITCHING FREQUENCY	60 Hz
REPEATABILITY	≤ 2% OF RATED OPERATING DISTANCE
SHIELDED	NO



SOURCE DRAWING - FOR REFERENCE ONLY

1. ALL DIMENSIONAL TOLERANCES: ±1.0mm

RELATED DOCUMENTS 1. 2. 3. 4.	3RD ANGLE PROJECTION 	THIS DRAWING IS PROPERTY OF TURCK INC. USE OF THIS DOCUMENT WITHOUT WRITTEN PERMISSION IS PROHIBITED.		TURCK INC High Technology Sensors and Automation Controls	
	MATERIAL BRASS BARREL	TOLERANCES UNLESS OTHERWISE SPECIFIED 0.0394in [1.00mm]	DRFT CBM	DATE 11/08/00	DESCRIPTION Ni14-G18-ADZ30X2
FINISH COPPER, NICKEL, CHROME PLATING	UNIT OF MEASUREMENT INCH [MILLIMETER]	OSCH	SCALE NONE	IDENTIFICATION NO. T4205402	REV B
B UPDATE VOLTAGE RATINGS	CBM	D6/26/01	T4664	FILE: T4205402	
REV DESCRIPTION	BY	DATE	EDD NO.	SHEET 1 OF 1	