

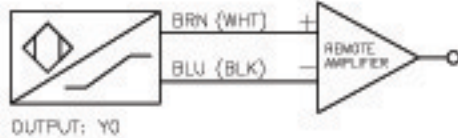
Inductive Sensors



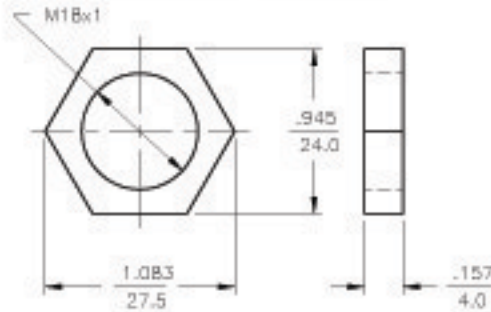
Housing Style	Part Number	ID Number	Features	Sensing Range (mm)	Output
18 mm - Nonembeddable, Partial Threading, Potted-In Cable 	Ni 7-EM18D-VP6X/S120	M4632100	<i>High Temp. 120°C</i>	7	4-Wire DC PNP
18 mm - Nonembeddable, Full Threading, Potted-In Cable 	Ni10-G18K-AN6X	T4671500	<i>Short Barrel</i>	10	3-Wire DC NPN
	Ni10-G18K-AP6X	T4670500	<i>Short Barrel</i>	10	3-Wire DC PNP
	Ni10-G18-Y0	T1006100		10	2-Wire NAMUR
Ni10-G18-Y0X	T4015100		10		
18 mm - Nonembeddable, Full Threading, Potted-In Cable 	Ni10-G18-AN6X	T4641700		10	3-Wire DC NPN
	Ni10-G18-AN7X	T4740700	<i>TTL Compatible</i>	10	
	Ni10-G18-AP6X	T4641600			10
18 mm - Nonembeddable, Full Threading, Potted-In Cable 	Ni14-G18-ADZ30X2	T4205402	<i>Extended Range</i>	14	2-Wire AC/DC Short-Circuit Protected
	Ni10-G18-AZ3X	T4330500		10	2-Wire AC/DC

Output	Switching Freq. (Hz)	Operating Current (mA) VAC/VDC	Operating Temp. (°C)	Protection	Housing	Face	End Cap	Power LED	Output LED	Cable Length/ Cable Mat.	Wiring Diagram #	Wiring Diagrams
10-30 VDC	2000	≤200	-25 to +120	IP 67	SS	PTFE	PTFE	N/A	YE	2M/PTFE	1	<p>Diagram 1</p> <p>Diagram 2</p>
	1000	≤200	-25 to +70	IP 67	CPB	PA 12	EPTR	N/A	YE	2M/PVC	2	<p>Diagram 3</p>
10-30 VDC	1000	≤200	-25 to +70	IP 67	CPB	PA 12	EPTR	N/A	YE	2M/PVC	3	
5-30 VDC	500	Remote	-25 to +70	IP 67	CPB	PA 12	EPTR	N/A	N/A	2M/PVC	4	<p>Diagram 4</p>
	500	Remote	-25 to +70	IP 67	CPB	PA 12	EPTR	N/A	YE	2M/PVC	4	
10-30 VDC	1000	≤200	-25 to +70	IP 67	CPB	PA 12	EPTR	N/A	YE	2M/PVC	2	<p>Diagram 5</p>
	1000	≤150	-25 to +70	IP 67	CPB	PA 12	EPTR	N/A	YE	2M/PVC	2	
10-30 VDC	1000	≤200	-25 to +70	IP 67	CPB	PA 12	EPTR	N/A	YE	2M/PVC	3	
20-250 VAC 10-300 VDC	20	≤400/300	-25 to +70	IP 67	CPB	PA 12	EPTR	N/A	RD	2M/PVC	5	
20-250 VAC 10-300 VDC	20	≤400/300	-25 to +70	IP 67	CPB	PA 12	EPTR	N/A	RD	2M/PVC	5	

WIRING DIAGRAM

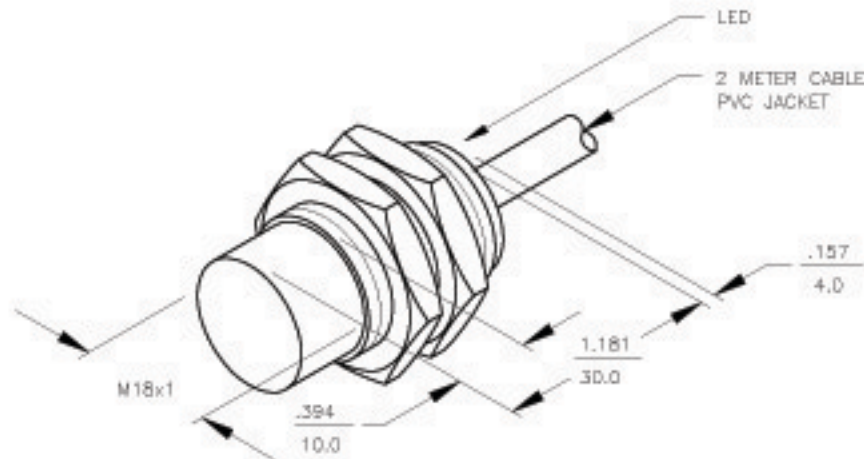


LOCKNUT LN-M18



SPECIFICATIONS

OPERATING VOLTAGE	5-15 VDC
HYSTERESIS (DIFFERENTIAL TRAVEL)	1-10% (5% TYPICAL)
NOMINAL VOLTAGE	8.2 VDC
OUTPUT FUNCTION	RESISTANCE CHANGE, REQUIRES REMOTE AMPLIFIER
RESISTANCE CHANGE FROM NONACTIVATED TO ACTIVATED CONDITION	1.0 kΩ to >5.0 kΩ
RESULTING CURRENT CHANGE	≥ 2.2 mA to ≤ 1.0 mA
REDONNED SWITCHING POINT FOR REMOTE AMPLIFIER	1.55 mA
POWER-ON EFFECT PROTECTION	REALIZED IN AMPLIFIER
POLARITY INVERSION PROTECTION	INCORPORATED
TIME DELAY BEFORE AVAILABILITY	≤ 2 ms
WIRE BREAK PROTECTION	REALIZED IN AMPLIFIER
PROTECTION AGAINST TRANSIENTS	REALIZED IN AMPLIFIER
OPERATING TEMPERATURE	-25°C to +70°C (-13°F to +158°F)
ENCLOSURE	MEETS NEMA 1, 3, 4, 6, 13 AND IEC IP67
SHOCK	30 g, 11 ms
VIBRATION	55 Hz, 1 mm AMPLITUDE (IN ALL 3 PLANES)
LED FUNCTION	RED: OUTPUT ENERGIZED
SENSING RANGE	10 mm - .394" (NOMINAL)
SWITCHING FREQUENCY	500 Hz
REPEATABILITY	≤ 2% of NOMINAL SENSING RANGE
SHIELDED	NO



RELATED DOCUMENTS 1. 2. 3. 4.	3RD ANGLE PROJECTION 	THIS DRAWING IS PROPERTY OF TURCK INC. USE OF THIS DOCUMENT WITHOUT WRITTEN PERMISSION IS PROHIBITED.		TURCK INC High Technology Sensors and Automation Controls	
	MATERIAL BRASS BARREL	TOLERANCES UNLESS OTHERWISE SPECIFIED .X ±0.02 .XX ±0.01 .XXX ±0.005 ANGLES ±1° ALL MILLIMETER DIMENSIONS ARE REFERENCE ONLY	CRAFT RJP	DATE 1/27/93	DESCRIPTION Ni10-G18-Y0X
FINISH COPPER/NICKEL/ CHROME PLATING	UNIT OF MEASUREMENT INCH [MILLIMETER]	USDR	SCALE NONE	IDENTIFICATION NO. T4015100	REV B
B UPDATE TO CURRENT TITLE BLOCK RDS 01/21/03 10104	BY DATE EDO NO.	DO NOT SCALE THIS DRAWING		FILE: T4015100	SHEET 1 OF 1

B	UPDATE TO CURRENT TITLE BLOCK	RDS	01/21/03	10104
REV	DESCRIPTION	BY	DATE	EDO NO.