

NEW INTERNATIONAL SERIES STEP-DOWN & UP AUTO-TRANSFORMERS



Thordarson is proud to introduce a new international series of step-down auto-transformers and a new line of step-up auto-transformers. Designed by popular request, these units reflect our continuing commitment to global expansion of our products. The input line cords are available with the plug configurations as shown below. The North American series is designed to expand the availability of use in other countries by use of a series adapter.

Please note: These transformers will not change frequency.



Step-Down Auto-Transformers with Circuit Breaker

Pri: 230VAC, 50/60 Hz **Sec:** 115VAC

Output Termination:

- 100VA-1500VA: 4" line cord with Nema 5-15R
- 2000VA: 4" line cord with Nema 5-20R (Canadian Style)
- 2500VA: Two 15A Receptacles, case mounted

Step-Up Auto-Transformers with Circuit Breaker

Pri: 115VAC, 50/60 Hz **Sec:** 230VAC

Input Termination:

- 100VA-1500VA: Nema 5-15P
- 2000VA-2500VA: Nema L5-30 Twist Lock

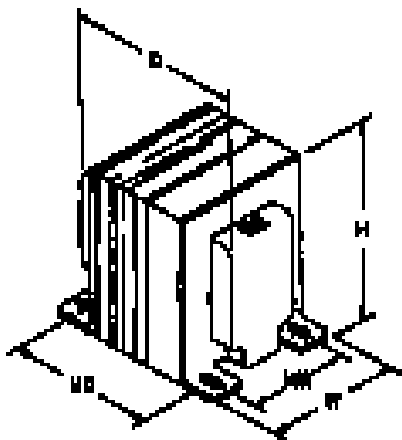
VA Size	European (Schuko)	United Kingdom	Australia	North American
100	TSD-100-EU	TSD-100-UK	TSD-100-AU	TSD-100-NA*
200	TSD-200-EU	TSD-200-UK	TSD-200-AU	TSD-200-NA*
350	TSD-350-EU	TSD-350-UK	TSD-350-AU	TSD-350-NA*
500	TSD-500-EU	TSD-500-UK	TSD-500-AU	TSD-500-NA*
750	TSD-750-EU	TSD-750-UK	TSD-750-AU	TSD-750-NA*
1000	TSD-1000-EU	TSD-1000-UK	TSD-1000-AU	TSD-1000-NA*
1500	TSD-1500-EU	TSD-1500-UK	TSD-1500-AU	TSD-1500-NA*
2000	TSD-2000-EU	TSD-2000-UK	TSD-2000-AU	TSD-2000-NA*
2500	TSD-2500-EU	TSD-2500-UK	TSD-2500-AU	TSD-2500-NA*

	European (Schuko)	United Kingdom	Australia	North American
Plug. Config.				
Plug Abbrev.	CEE 7/7 (SCHUKO)	BS 1363 With Fuse (UK1-13P)	AU2-15P	6-15P
Plug Rating	16A 250V	13A 250V	15 A 250 V	15 A 240 V

VA Size	European (Schuko)	North American
100	TSU-100-EU	TSU-100-NA
200	TSU-200-EU	TSU-200-NA
350	TSU-350-EU	TSU-350-NA
500	TSU-500-EU	TSU-500-NA
750	TSU-750-EU	TSU-750-NA
1000	TSU-1000-EU	TSU-1000-NA
1500	TSU-1500-EU	TSU-1500-NA
2000	TSU-2000-EU	TSU-2000-NA
2500	TSU-2500-EU	TSU-2500-NA

	European (Schuko)	North American
Output Receptical		
Receptical Abbreviation	CEE 7	6-15R

* Please Note: These units may require separate adapters to be purchased for the specific country destination.



VA (Size)	Dimensions			Mounting		
	H	W	D	MW	MD	LBS
100 TSU	3 7/16	2 7/8	4 1/8	2 1/4	3	3.7
100 TSD	3 7/8	3 3/16	4 3/16	2 1/2	3	4.4
200 *	3 7/8	3 3/16	5 3/8	2 1/2	3 1/8	6.3
350 *	4 1/4	3 1/2	5 1/2	2 3/4	4 3/8	9.0
500 *	4 5/8	3 13/16	5 3/4	3	4 7/16	10.3
750 *	4 5/8	3 13/16	6 1/2	3	5 7/16	14.5
1000 *	5 5/16	4 7/16	7 1/2	3 1/2	6	21.3
1500 *	6 3/8	5 5/16	8 1/8	4 1/4	6 5/8	29.0
2000 *	6 3/8	5 5/16	8 3/8	4 1/4	6 7/8	32.5
2500 *	6 3/8	5 5/16	9 7/8	4 1/4	8 3/8	45.0

* Please Note: TSD & TSU Series are similar dimensions.
Only TSD-100 & TSU -100 Have different dimensions