

Surface Mount Terminal Blocks

TYPE 971-SLK-CPL

5 mm spacing - 2 to 12 poles

 Distributor Stock Check



Series	Download PDF	3D Model	Can plug with	How to order	Color specifications	Print
--------	--------------	----------	---------------	--------------	----------------------	-------



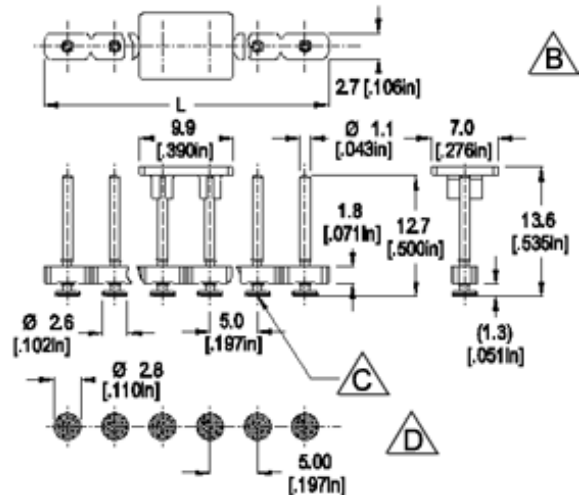
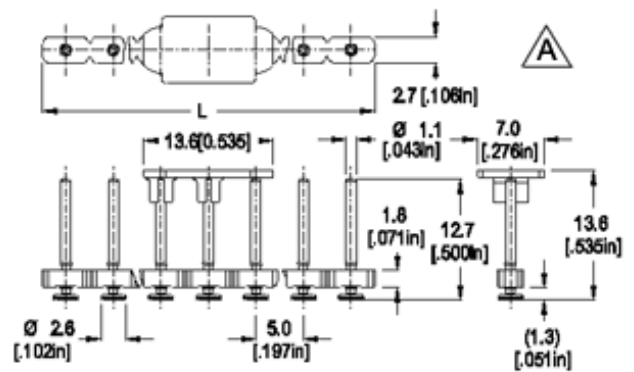
971-SLK-CPL



One possible variation of assembly



RoHS WEEE Pb free compliant



Dimensions: mm (in.)

Length of Connector (L)

L = No. of Poles x Center to Center Spacing

(A) Odd numbers of poles

(B) Even numbers of poles

(C) Coplanarity of the pins on the PCB surface is ensured by the floating effect up to 0.5 mm

(D) PCB Pad layout

Recommended Stencil Thickness: 0.15 mm (0.006 in.)

When locating connector, allow 0.5 mm clearance around it for process-induced variations.

Description

Approval Information

US Patent # 7,207,811 B2

In order to ensure total co-planar adaptation of the pinstrip to the surface variation of the PCB, the co-planar pinstrip includes "floating pins". This ensures elimination of CTE mismatch (coefficient of thermal expansion) and a total co-planarity adaptation to the surface of the PCB. Material will handle reflow temperatures well without deforming or melting.

- Pinstrip
- Plug-In Direction Perpendicular to PCB and Wire Entrance Parallel to PCB when plugged with **950-NAF-DS**, **950-NLFL-DS**, **958-NLFL-DS**, **950-FL-DS**, **950-T-FL-DS**, **115-F-111**, **115-F-118** and **115-F-211**
- Total co-planarity adaptation to the surface of PCB
- Typical pull off forces (vertical): 10 kg per pole (depending on soldering process).
- Typical peel off forces (horizontal): 3 kg per pole (depending on soldering process).

Technical Data

Center to Center Spacing: 5 mm (0.197 in.)

Application

You can now convert one more component on your board to a genuine surface mount. You can increase packaging and component density, use both sides of the PCB, reduce and eliminate set-up costs and simplify and streamline your processes. The 971-SLK-CPL "nail head" pin design ensures a secure and reliable contact with the printed circuit board. The total co-planar adaptability of this pinstrip allows it to be successfully manufactured and processed at yields approaching zero defects for this characteristic and its effects. Plastic thermo resistant caps ensure automated pick & place-ability for both odd and even pole versions. The SMT pinstrip product is designed to work in conjunction with the 950-NLFL-DS and 950-FL-DS plug-in screw connector.

[Top of page](#)

Rating	Current(A)	Voltage(V)	Application group	AWG
UL	10	300	B,D	
CSA	10	300	B,D,E	

Material

Molding: SPS (syndiotactic polystyrene), 30% GF (glass fiber reinforced), self extinguishing UL 94, V-0, color white

Temperature limits:

Short Time: 240°C (464°F)

Continuous: RTI 105°C (221°F)

Low Limit: -40°C (-40°F)

Comparative Tracking Index: CTI > 250

Oxygen Index Rating: 28%

Average weight: 0.04 gram,

Solder Pin: Ø 1.1 mm (0.04 in.), Tin plated copper alloy

How to order

Item	971-SLK-CPL
Options	G05: Gold Plating (5 micro inches) G30: Gold Plating (30 micro inches) S30: Silver Plating (30 micro inches) TR: Tape and Reel Assembly PCP: Removable Pick Cap

Note: Plated component: solder pin

971-SLK-CPL/

POLES:
02 to 12

[Request sample](#)

[Request quote](#)

Quantity

Accessories

[Add to shopping cart](#)