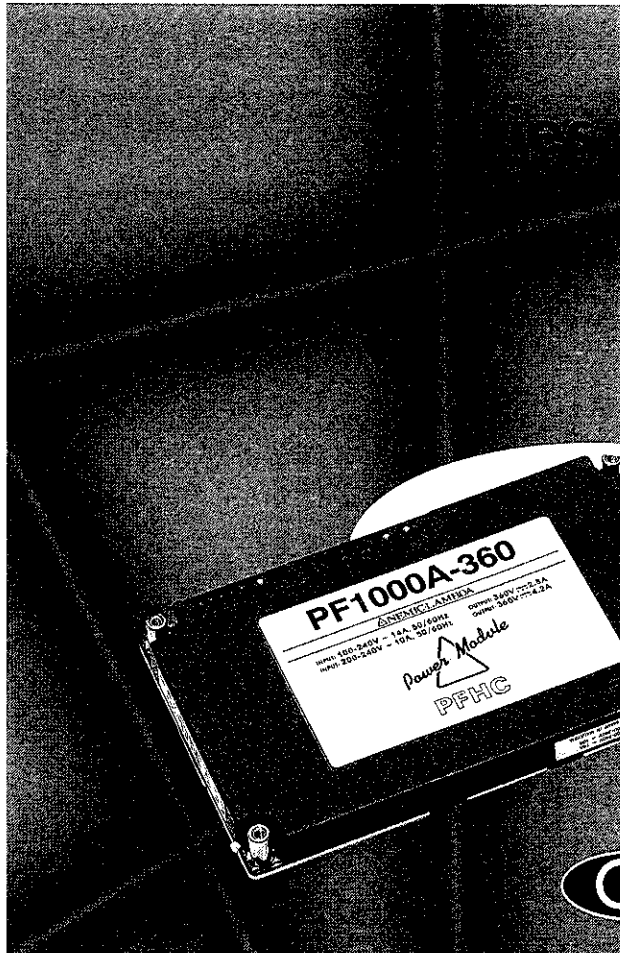


PF

LAMBDA 

An Invensys company



500-1500

**WATTS
RECTIFIER**

Low profile

Power factor 0.95

Conforms to EN61000-3-2

Power good signal

Redundant N+1

Maximum Power: 750 or 1500 Watts

The PF series of Power Factor modules offers wide range AC input (85-265 VAC) ensuring worldwide operation and are fully compliant with EN61000-3-2. They have integral diagnostics, auxilliary supply as well as control circuitry and are suitable for use with all PH280VDC input modules.

INPUT	PF500A-360		PF1000A-360	
Voltage inputs (VAC)	100-240	200-240	100-240	200-240
Input voltage range	85-265	170-265	85-265	170-265
Input voltage range with PFHC	85-255	170-255	85-255	170-255
Frequency inputs	47 at 63Hz		47 at 63Hz	
Input current (typical)	5.6A	4.0A	11.2A	8.0A
Output current (typical)	30A	60A	30A	60A

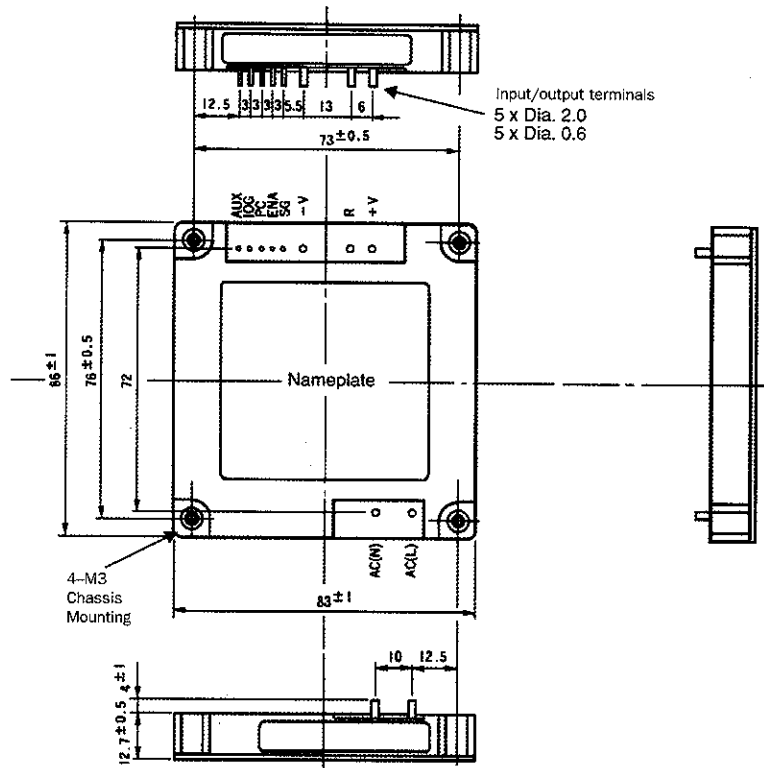
OUTPUT	PF500A-360		PF1000A-360	
Output voltage	360VDC		360VDC	
Output current (max.)	1.4A	2.1A	2.8A	4.2A
Adjustable output range	±2%			
Power of output (max.)	504W	756W	1008W	1512W
Alarm	power good signal			
Maximum ripple voltage	20 Vp-p			
Maximum line regulation	5VDC			
Maximum load regulation	10VDC			
Current limit	Fold back			
Over voltage protection	Standard			

GENERAL	PF500A-360		PF1000A-360	
Thermal protection				
Efficiency (type.)	90%	94%	90%	94%
Operation parallel	Possible N+1			

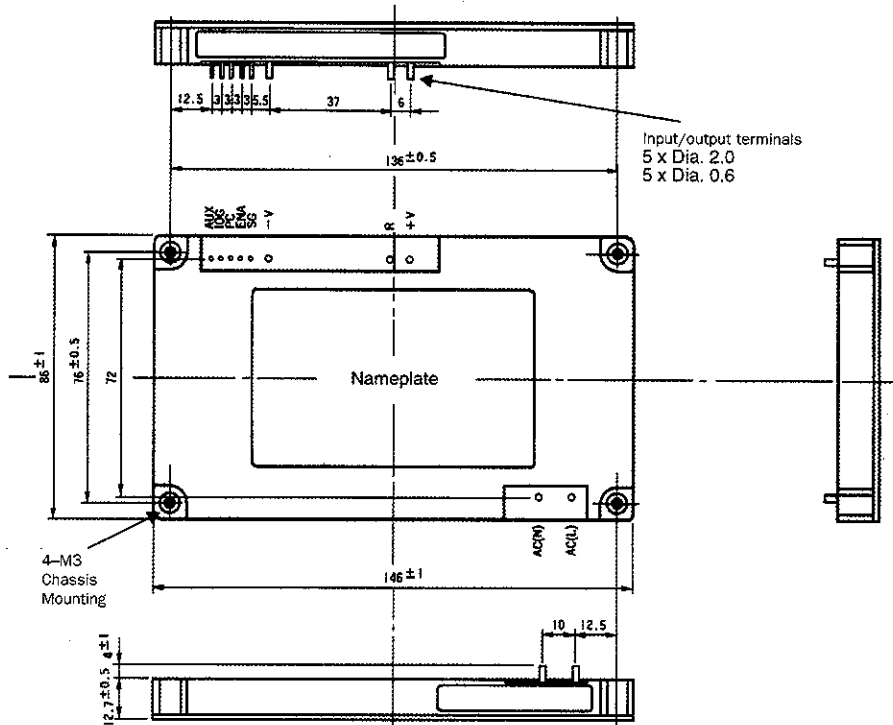
ENVIRONMENTAL	PF500A-360		PF1000A-360	
Operating temperature	-20°C to +85°C on baseplate			
Conforms to	UL1950, CSA234, EN60950, EN41003, BABT, CE (EN60950)			
Dimensions	83 X 12.7 x 86mm		146 x 12.7 x 86mm	
Weight	160g		260g	

EDITION 2001

PF500A



PF1000A



NB : Product is viewed from below (not above)
All dimensions in mm.

Series PF

LAMBDA 
An Invensys company

EDITION 2001