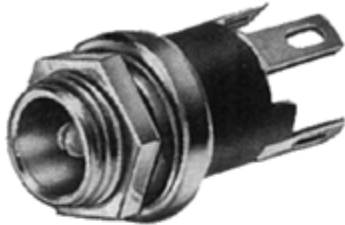


# Switchcraft®

[Previous Page](#) | [Return to Index](#) | [Next Page](#)

1



2



3



4



## STRAIGHT MINIATURE POWER JACKS

1. 712A
2. PC712A
3. 2C1072
4. L722A

[click here to download a schematic drawing](#)

(you will need to have Adobe Acrobat installed on your system to do this)



## FEATURES

\*2 conductor jack.

\*Automatic switch over from AC to DC permitted by sleeve shunt spring.

\*Split center pin shaped to hold mating plug firmly. (732A available in solid center pin only.)

\*Choose solder lug or PC terminal. (732A not available in PC terminal.)

\*Bushing length available as .219" or extended .319 to permit use in thicker panels. (732A not available in extended length.)

\*L712A and PCL712A accept plugs with .475" long, 0.099" diameter sleeve.

\*L722A and PCL722A accept plugs with .475" long, 0.08" diameter sleeve.

\*Non-turn mounting possible using standard

\*"D" shape bushing.

## MOUNTING

**Part Numbers 712A, 722A and 732A** - Mounts in .313 inch diameter hole in panels up to .125 inches thick (maximum).

**Part Numbers PC712A and PC722A** - Same as 712A. See drawing for PC board layout.

**Part Number 2C1072** - Jack covers for 712A, 722A and 732A - special order only.

For insulated mounting, two insulated washers are available on special order. Mounting hole diameter is .375 inches. See "Insulated Mounting" drawing.

**Part Number P2442** - Phenolic flat washer.

**Part Number S4263** - Swedged fiber washer.

## SPECIFICATIONS

### MECHANICAL

**Life:** 10,000 insertion/withdrawal cycles minimum.

**Insertion/Withdrawal Forces:** 3 pound insertion (maximum), 4 ounce minimum withdrawal.

**Part Numbers 712A, PC712A, 722A, PC722A, 732A**

## ELECTRICAL

**Contact Resistance:** .01 ohms maximum (initial),

.02 ohms maximum (after humidity, durability exposure),

.1 ohms maximum (after salt spray).

**Insulation Resistance:** 10,000 M(omega) minimum (initial),

1,000 M(omega) minimum (after humidity, durability exposure).

**Dielectric Withstanding Voltage:** 500 V AC maximum.

**Contact Rating:** 5 A, 12 V DC. resistive.

## MATERIAL

**Housing:** Molded plastic.

**Mounting Bushing and Hex Nut:** Plated copper alloy.

**Pin, Spring and Terminals:** Plated copper alloy.

**Insulators:** Rigid plastic.

**Hardware:** Supplied with one **Number P2439** nickel-plated brass hex nut, and one **Number P2441** nickel-plated steel flat washer.

Part Number	Description	Outside Diameter*	Typical Mating Plug**
712A	Solder lugs	0.1 inches (.097-.099)	760
PC712A	PC terminals		760K
L712A	Longer Bushing		761K
722A	Solder lugs	0.08 inches (.075-.077)	S760
PC722A	PC terminals		S760K
L722A	Longer Bushing		S761K
732A	Solder lugs	0.05 inches	860

\* Center pin diameter.

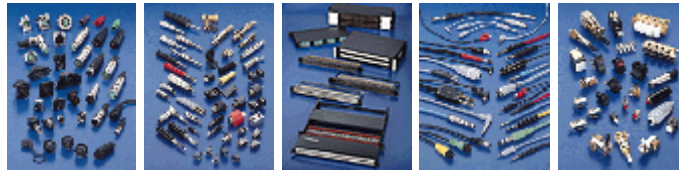
\*\* Other mating Plugs are available.

MM CONVERSIONS					
Series	Catalog Dimension	+ tol/-tol	Range	mm equivalent	Use

PC712A	0.156			3.9624	3.96
	0.150			3.81	3.81
	0.062			1.5748	1.57
	0.040			1.016	1.02
	0.406			10.3124	10.31
	0.216			5.4864	5.49
	0.446			11.3284	11.33
	0.46875			11.90625	11.90

[Previous Page](#) | [Return to Index](#) | [Next Page](#)

**To search a category please click on the corresponding icon:**



| [Connectors](#) | [Jacks and Plugs](#) |  
| [Patch Panels, Patch Kits & Jackfields](#) | [Cable Assemblies and Patch Cords](#) | [Switches](#) |

**All products shown are covered by Switchcraft's limited lifetime warranty.**

| [Switchcraft home](#) |  
[About Us](#) | [Products](#) | [What's New](#) | [Search](#) | [Contact Us](#)