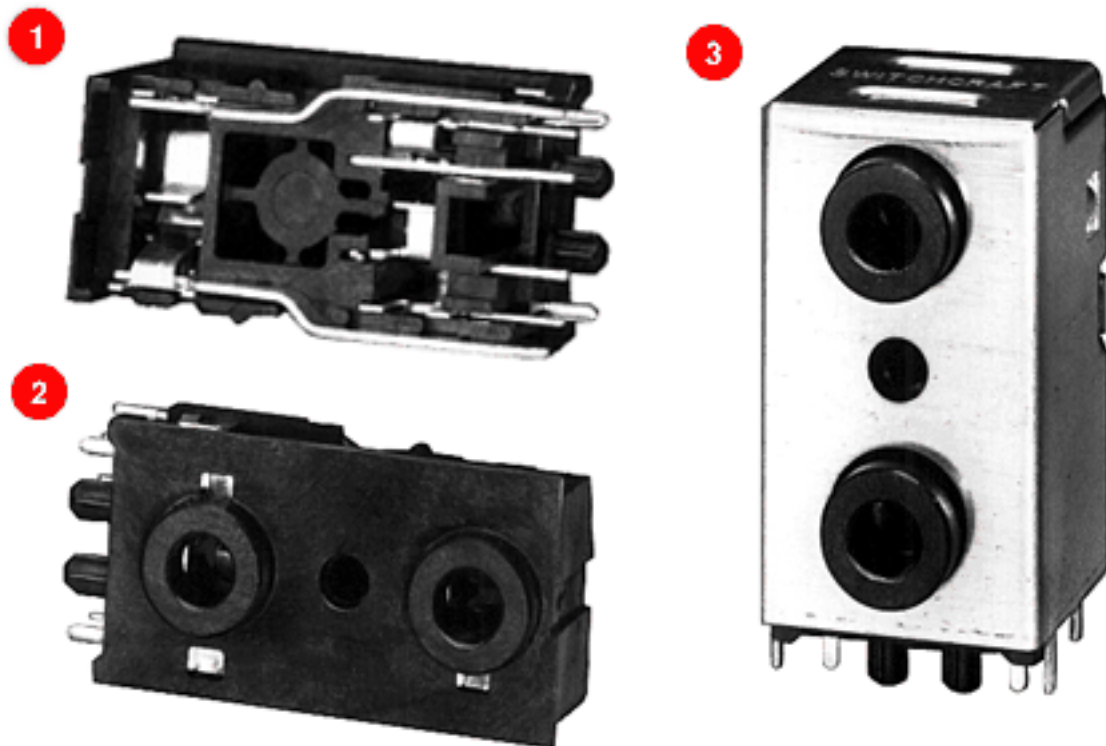


Switchcraft®

[Previous Page](#) | [Return to Index](#) | [Next Page](#)



3.5 mm DUAL STEREO JACK

1. UNSHIELDED - 35RAPC7J
2. UNSHIELDED - 35RAPC7J
3. SHIELDED - 35RAPC7JS

[click here to download a schematic drawing](#)

(you will need to have Adobe Acrobat installed on your system to do this)



FEATURES

- * 3-conductor, miniature phone jack mates with 3.5 mm finger plugs.
- * Saves board space...two jacks in a single vertical mount footprint.
- * Ideally suited for infra-red and convection oven soldering 235°C (455°F).
- * Board retention pins accommodate PC board thickness range of .050 inches to .080 inches.
- * Single-screw panel mounting hole is standard.
- * EMI-RFI shield, optional.
- * Housing UL 94V-0 rated against flammability.

APPLICATIONS

- * Multi-media workstations
- * Headphones/microphone sets
- * Interactive TV
- * Audio
- * Telecommunications
- * Medical
- * Computer
- * Instrumentation

MATERIALS

Housing: Thermoplastic.

Tip and Ring Springs: Silver-plated copper alloy.

Shunt Terminals: Silver-plated copper alloy.

Sleeve Terminals: Silver-plated copper alloy.

Shield: Pre-tinned copper alloy.

PERFORMANCE SPECIFICATIONS

1. **Insertion/Extraction Forces, initial:** 0.8 to 6 pounds.

2. **Dielectric Withstanding Voltage:** 500 VAC.

3. **Insulation Resistance, initial:** 100 Megaohms, min.

4. **Contact Resistance:** Between plug and jack:
50 milliohms, maximum
Between springs and shunts:
30 milliohms, maximum.

5. **Life:** 5000 cycles, minimum.

ORDERING INFORMATION

Part Number:

Shielded - **35RAPC7JS**

Unshielded - **35RAPC7J**

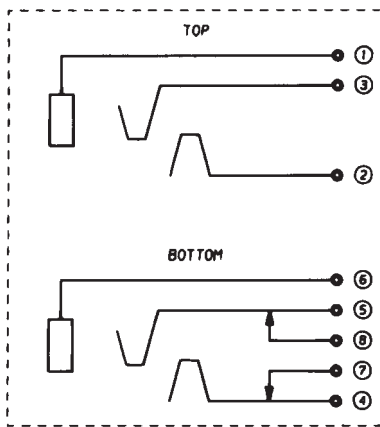
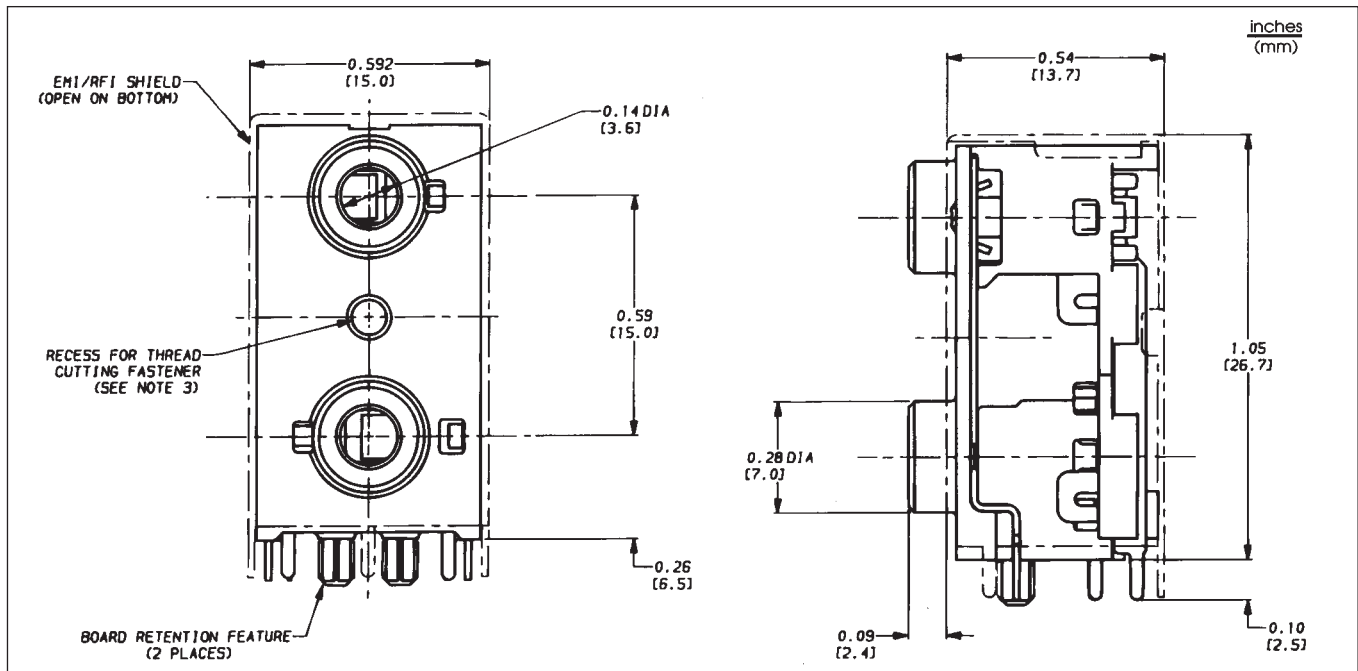
1. Order by part number.

2. Contact Switchcraft for special order information.

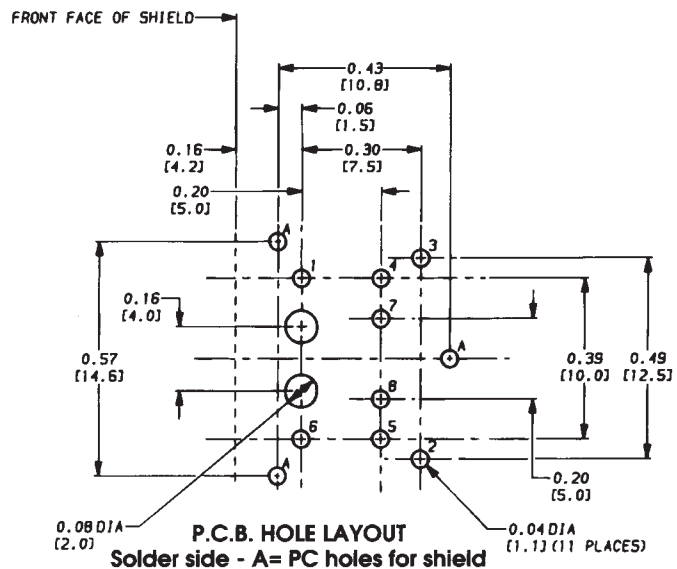
[Previous Page](#) | [Return to Index](#) | [Next Page](#)

To search a category please click on the corresponding icon:

3.5 mm DUAL STEREO JACK



SCHEMATIC



P.C.B. HOLE LAYOUT
Solder side - A= PC holes for shield

NOTES: □

1. Shield isolated from terminals 1 and 6. □
2. Width of all terminals = 0.032" (0.814mm). □
3. Use Camcar Textron S25 T8 TORX pan head "Duro-PT" □ thread cutting fastener of appropriate length or equivalent.

DIMENSIONS ARE FOR REFERENCE ONLY Inch
(mm)

NOTE: Contact your Switchcraft Representative for price and delivery.