



Sunbrite Product Gallery

COMPLETE SOLID STATE, ENERGY EFFICIENT LIGHTING SOLUTIONS

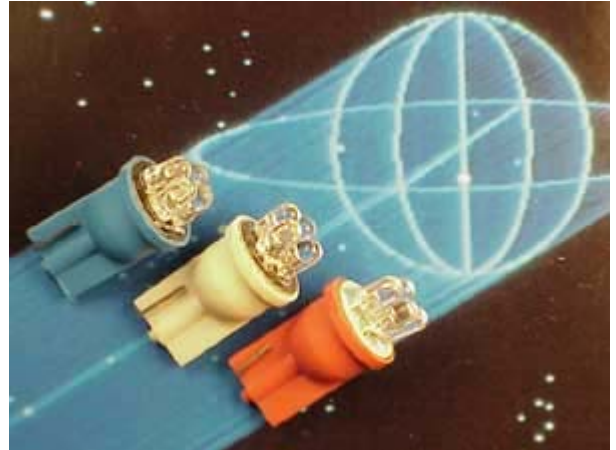
LED Miniature Wedge Base Four LEDs

Applications

- Warning Lamps and Indicators
- Decorative Lighting
- Dome/Interior Light
- Clearance/Side Marker Light

Features\Benefits

- Large Range of Voltages Available
- Other Colors Available
- Low Power Consumption
- Drop in Incandescent Replacement
- Vibration Resistant



[Product Gallery](#) > [Traffic and Automotive](#) > [LED Miniature Wedge Base Four LEDs](#)

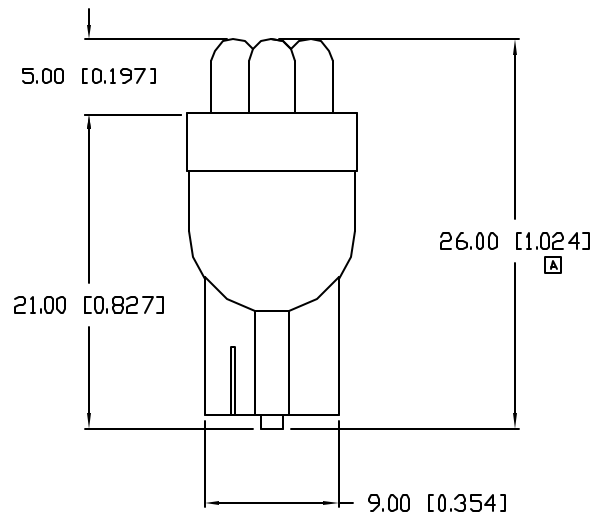
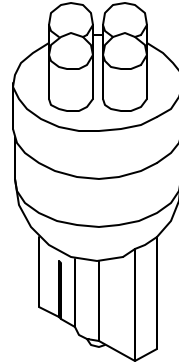
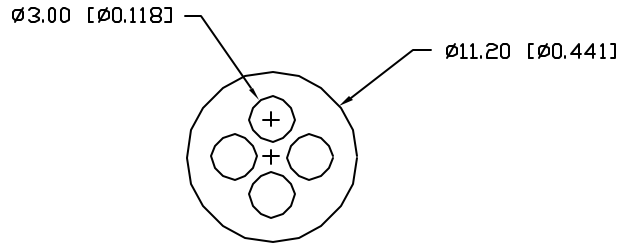
Part Numbers:	Emitted Color	Wavelength (nm)	Material	Unit LED Intensity mCD per die @ 20mA (If)(Typical)	Fwd. Voltage	Standard Common Pin
SSP-04MWB2UPL2	Ultra Green	525	InGaN/SiC	4,500	12	30
SSP-04MWB3SL2	Super Yellow	590	AlInGaP	3,500	12	30
SSP-04MWB6UL2	Ultra Red	626	AlInGaP	3,500	12	30
SSP-04MWB7UL2	Ultra Super Blue	470	InGaN/SiC	3,000	12	30
SSP-04MWB9L2	Ultra White	-	InGaN/SiC	7,000	12	30

UNCONTROLLED DOCUMENT

PART NUMBER
SSP-04MWB6UL2

REV.
A

REV.	E.C.N. NUMBER AND REVISION COMMENTS	DATE
A	E.C.N. #10961.	



ELECTRO-OPTICAL CHARACTERISTICS $T_A=25^{\circ}\text{C}$ $V_f=20\text{V}$

PARAMETER	MIN	TYP	MAX	UNITS	TEST COND
PEAK WAVELENGTH		626		nm	
FORWARD VOLTAGE		12.0	14.0	V_f	
REVERSE VOLTAGE	5.0			V_r	$I_r=100\mu\text{A}$
AXIAL INTENSITY		3500		mcd	$V_f=20\text{V}$
VIEWING ANGLE		30		$2x$ theta	
EMITTED COLOR:	SUPER HIGH INTENSITY RED				
EPOXY LENS FINISH:	WATER CLEAR LENS				

LIMITS OF SAFE OPERATION AT 25°C PER MODULE

PARAMETER	MAX	UNITS
PEAK FORWARD VOLTAGE	14	V
STEADY CURRENT	45	mA
POWER DISSIPATION	105	mW
DERATE FROM 25°C	-1.2	$\text{mW}/^{\circ}\text{C}$
OPERATING, STORAGE TEMP.	-40 TO +85	$^{\circ}\text{C}$

*UNLESS OTHERWISE SPECIFIED TOLERANCES PER DECIMAL PRECISION ARE: X= ± 1 (± 0.039), X.X= ± 0.5 (± 0.020), X.XX= ± 0.25 (± 0.010), X.XXX= ± 0.127 (± 0.005), LEAD SIZE= ± 0.05 (± 0.002), LEAD LENGTH= ± 0.75 (± 0.030), MIN= $\frac{+0.00}{-0.00}$ MAX= $\frac{+0.00}{-0.00}$

UNCONTROLLED DOCUMENT

REV.
A

PART NUMBER
SSP-04MWB6UL2

CONFIDENTIAL INFORMATION
THE INFORMATION CONTAINED IN THIS DOCUMENT IS THE PROPERTY OF SUNBRITE LEDS. EXCEPT AS SPECIFICALLY AUTHORIZED IN WRITING BY SUNBRITE LEDS, THE HOLDER OF THIS DOCUMENT SHALL KEEP ALL INFORMATION CONTAINED HEREIN CONFIDENTIAL AND SHALL PROTECT SAME IN WHOLE OR IN PART FROM DISCLOSURE AND DISSEMINATION TO ALL THIRD PARTIES.



LED MINIATURE WEDGE BASE, RED.

RELIABILITY NOTE
DUR MANY YEARS OF EXPERIENCE DATA ACCUMULATION INDICATE THAT SOLDER HEAT IS A MAJOR CAUSE OF EARLY AND FUTURE FAILURE. PLEASE PAY ATTENTION TO YOUR SOLDERING PROCESS.

DRAWN:
BC

CHECKED:

APPROVED:

DATE:
PAGE: 1 OF 1