

## Plastic Boxes PI series



The line of molded enclosures is ideally suited for instrumentation and telecommunications equipment from hand held to desk top sizes. Available in twelve sizes and two versions.

**Version #1** - Dark gray ABS covers with light gray ABS end panels. UL94V-0 flammability rating, suggested service temperature -40C to 80C

**Version #2** - Light gray ABS covers with dark gray ABS end panels. UL94-HB flammability rating, suggested service temperature -40C to 80C

### Design Features

- \*Designed to IP 54 of IEC 529
- \*Two part design with tongue and groove joint between top and bottom covers and specially designed end panels
- \*Internal guide slots provide for vertical mounting of PCBs
- \*Internal bosses provided for horizontal mounting of PCBs
- \*Top and bottom covers are lightly textured providing a scratch-resistant high quality finish
- \*Four screws are countersunk in the bottom cover and threaded into internal bosses which secure the top cover and end panels

PI Series

Version 1	Version 2	A	B	C	D	E	F	Size	Weight (Ozs.)
PI-1900	PI-1900-LG	.63"	1.97"	3.54"	.47"	1.64"	3.12"	.46"x 1.72"x .11"	1.7
PI-1901	PI-1901-LG	.94"	1.97"	3.54"	.78"	1.64"	3.12"	.77"x 1.72"x .11"	1.7
PI-1902	PI-1902-LG	1.26"	1.97"	3.54"	1.10"	1.64"	3.12"	1.09"x 1.72"x .11"	2.2
PI-1903	PI-1903-LG	1.18"	2.36"	4.72"	1.02"	1.99"	4.25"	.93"x 1.95"x .13"	2.7
PI-1904	PI-1904-LG	1.57"	2.36"	4.72"	1.41"	1.99"	4.25"	1.32"x 1.95"x .13"	3.2

PI-1905	PI-1905-LG	1.97"	2.36"	4.72"	1.81"	1.99"	4.25"	1.72"x 1.95"x .13"	4.0
PI-1906	PI-1906-LG	1.18"	3.15"	5.91"	1.02"	2.78"	5.46"	.93"x 2.74"x .13"	4.5
PI-1907	PI-1907-LG	1.77"	3.15"	5.91"	1.61"	2.78"	5.46"	1.52"x 2.74"x .13"	5.2
PI-1908	PI-1908-LG	2.36"	3.15"	5.91 "	2.20"	2.78"	5.46"	2.11 "x 1.66"x .13"	5.5
PI-1909	PI-1909-LG	1.57"	3.94"	7.48"	1.41"	3.48"	6.92"	1.29"x 3.45"x .13"	7.0
PI-1910	PI-1910-LG	2.36"	3.94"	7.48"	2.20"	3.48"	6.92"	2.06"x 3.45"x .13"	9.5
PI-1911	PI-1911-LG	3.15"	3.94"	7.48"	2.99"	3.48"	6.92"	2.86"x 3.45"x .13"	10.5

**BUD INDUSTRIES INC.**

P.O. Box 998

Willoughby, Ohio 44094

Phone: 440-946-3200 Fax: 440-951-4015

E-Mail: [saleseast@budind.com](mailto:saleseast@budind.com)

PART NAME

PI SERIES - ABS MOLDED ENCLOSURE

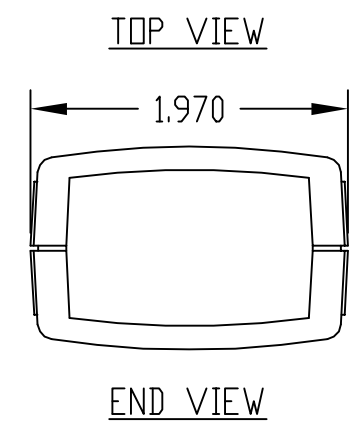
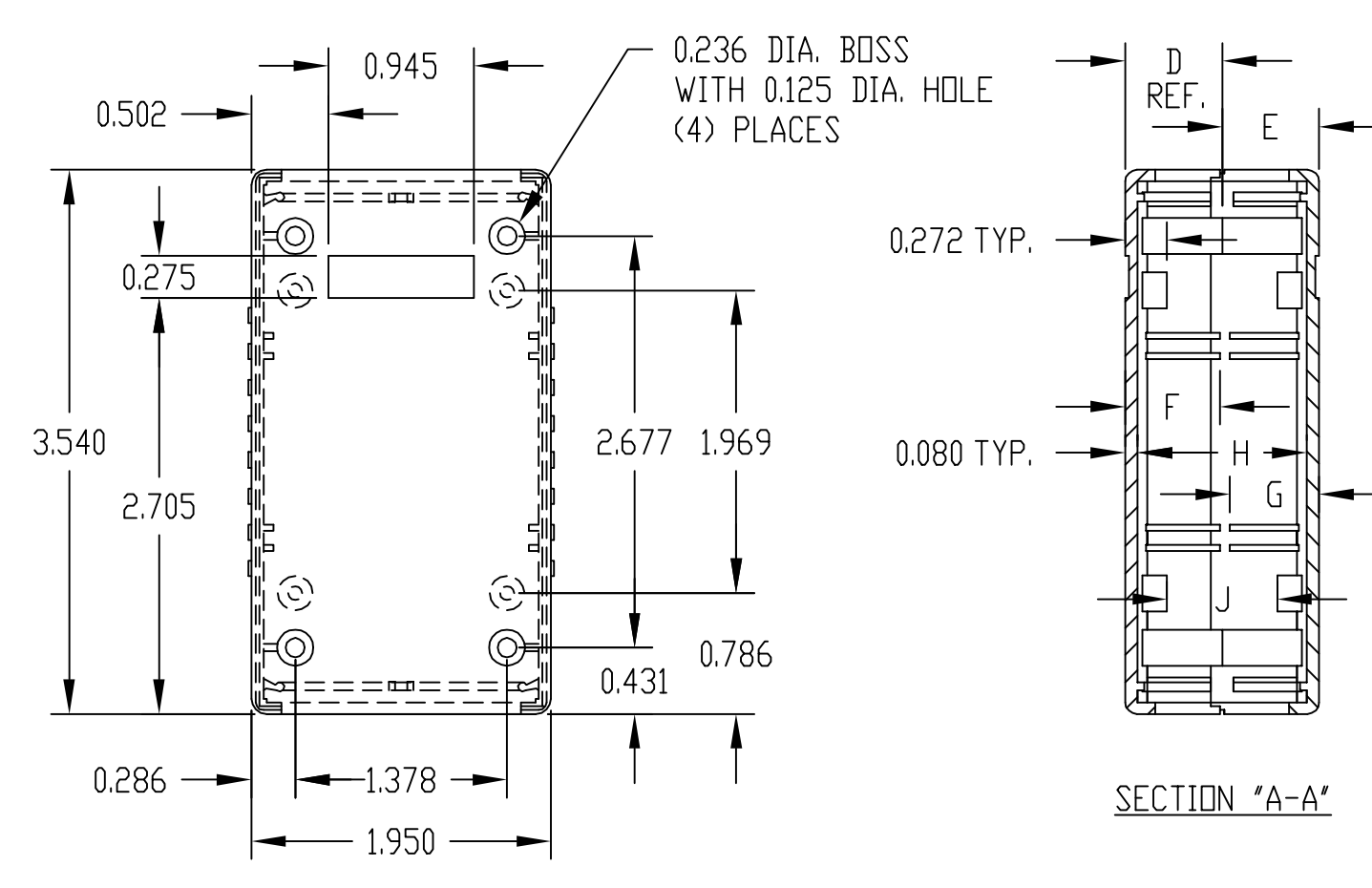
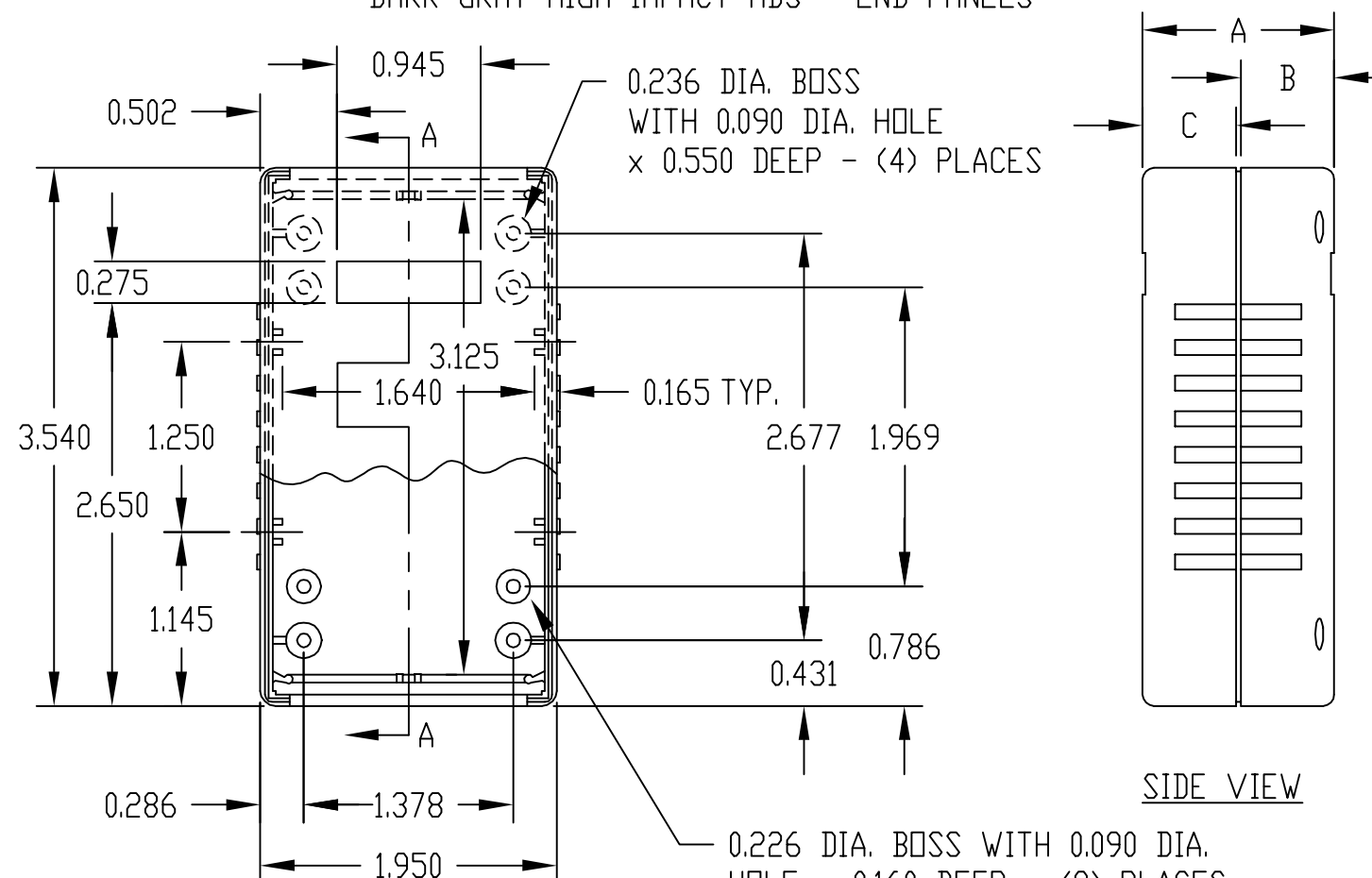
PART No.

PI-1900 THRU PI-1902  
PI-1900-LG THRU PI-1902-LG

MATERIAL & FINISH:

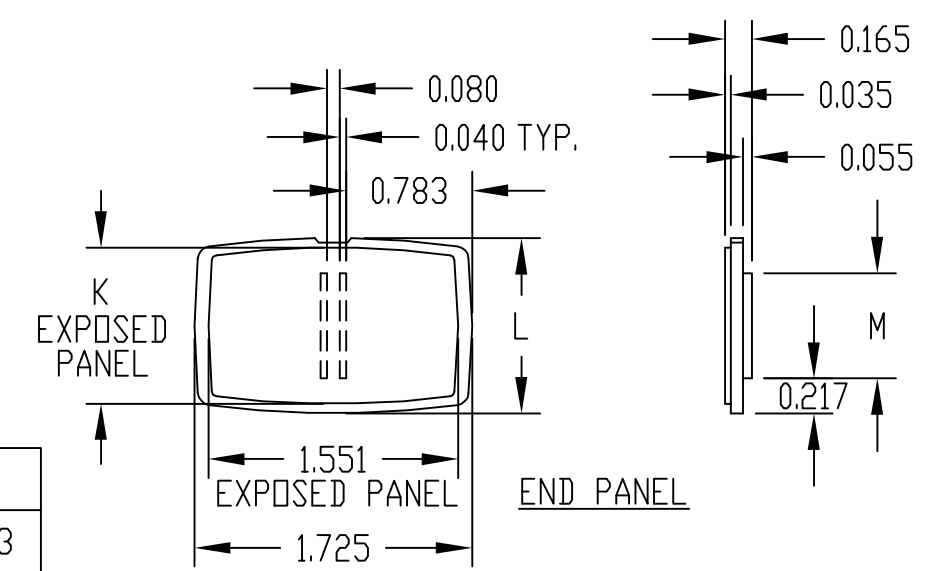
(NO SUFFIX) DARK GRAY HIGH-IMPACT ABS (UL94-V0) - TOP & BOTTOM  
LIGHT GRAY HIGH-IMPACT ABS (UL94-V0) - END PANELS  
(SUFFIX -LG) LIGHT GRAY HIGH-IMPACT ABS - TOP & BOTTOM  
DARK GRAY HIGH-IMPACT ABS - END PANELS

FOUR (4) M3 x (N") LG. SCREWS  
SUPPLIED FOR ASSEMBLY.



0.226 DIA. BOSS WITH 0.090 DIA. HOLE x 0.160 DEEP - (8) PLACES  
MOUNTING BOSSES USE EITHER M2.5 METRIC OR #4 STD. SHEET METAL SCREWS x 0.188" LG. (NOT SUPPLIED)

NOTE: ALL DIMENSIONS HAVE ±0.015 TOLERANCE UNLESS OTHERWISE SPECIFIED.



PART No.	A	B	C	D	E	F	G	H	J	K	L	M	N
PI-1900	0.630	0.300	0.300	0.325	0.325	0.290	0.290	0.470	0.086	0.341	0.461	----	0.433
PI-1901	0.940	0.300	0.615	0.630	0.325	0.605	0.290	0.780	0.550	0.655	0.775	0.341	0.480
PI-1902	1.260	0.615	0.615	0.630	0.630	0.605	0.605	1.100	0.716	0.970	1.090	0.656	0.835