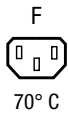


IEC appliance outlet F, snap-in mounting, front side, solder/quick connect terminal



6600-4

**Description**

- Panel Mount:
Snap-In Version from front side
- Outlet, Pin temperature 70 °C, Protection class I
- Solder terminals or quick connect terminals

Other versions on request

- Other panel thickness

Weblinks

[Approvals](#), [RoHS](#), [CHINA-RoHS](#), [e-Store](#), [SCHURTER-Stock-Check](#), [Distributor-Stock-Check](#)

Technical Data

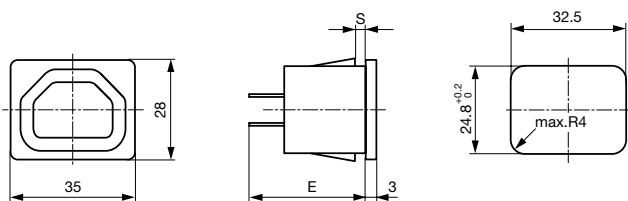
Ratings IEC	10A / 250VAC; Hz 50
Ratings UL/CSA	15A / 250VAC; 60Hz
Dielectric Strength	> 2 kVAC between L-N > 2 kVAC between L/N-PE (1 min/50Hz)
Allowable Operation Temp.	-25 °C to 70 °C
Degree of Protection	from front side IP 30 acc. to IEC 60529
Protection Class	Suitable for appliances with protection class I acc. to IEC 61140
Terminal	Solder terminals or quick connect terminals
Panel Thickness s	Snap-in: 1/1.2/1.5/2/2.5/3 mm
Material: Housing	Thermoplastic, black, UL 94V-0

Appliance-Inlet /-Outlet	F acc. to IEC/EN 60320-2-2, UL 498, CSA C22.2 no. 42 (for cold condition) pin-temperature 70 °C, 10A, Protection class I
--------------------------	---

Dimensions

6600-4

Length |—————| 35 mm



E: solder terminals 3.5x0.8mm 24.1mm
 E: quick connect terminals 4.8x0.8mm 26.5mm
 E: quick connect terminals 6.3x0.8mm 27.5mm
 S: 1.0; 1.2; 2.0; 2.5; 3.0 mm

Distributor-Stock-Check | SCHURTER-Stock-Check | e-Store

Variants

Panel mounting	Panel Thickness s [mm]	Terminal	Order Number
Snap-in	1	Quick connect terminals 4.8 x 0.8 mm	6600.4210
Snap-in	1.2	Quick connect terminals 4.8 x 0.8 mm	6600.4212
Snap-in	1.5	Quick connect terminals 4.8 x 0.8 mm	6600.4215
Snap-in	2	Quick connect terminals 4.8 x 0.8 mm	6600.4220
Snap-in	2.5	Quick connect terminals 4.8 x 0.8 mm	6600.4225
Snap-in	3	Quick connect terminals 4.8 x 0.8 mm	6600.4230
Snap-in	1	Quick connect terminals 6.3 x 0.8 mm	6600.4310
Snap-in	1.2	Quick connect terminals 6.3 x 0.8 mm	6600.4312
Snap-in	1.5	Quick connect terminals 6.3 x 0.8 mm	6600.4315
Snap-in	2	Quick connect terminals 6.3 x 0.8 mm	6600.4320
Snap-in	2.5	Quick connect terminals 6.3 x 0.8 mm	6600.4325
Snap-in	3	Quick connect terminals 6.3 x 0.8 mm	6600.4330
Snap-in	1	Solder terminals 3.8 x 0.8 mm	6600.4110
Snap-in	1.2	Solder terminals 3.8 x 0.8 mm	6600.4112
Snap-in	1.5	Solder terminals 3.8 x 0.8 mm	6600.4115
Snap-in	2	Solder terminals 3.8 x 0.8 mm	6600.4120
Snap-in	2.5	Solder terminals 3.8 x 0.8 mm	6600.4125
Snap-in	3	Solder terminals 3.8 x 0.8 mm	6600.4130

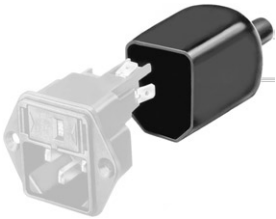
1) Minimum order quantity for rivet mount types required

Cord retaining clamp and insulation cover see accessoires

Packaging unit 50 Pcs

Accessory

Description



Assorted Covers
Rear Cover



Cord retaining kits
Cord retaining strain relieve