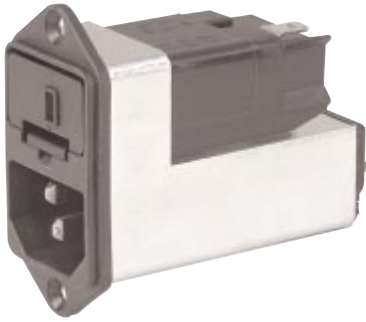
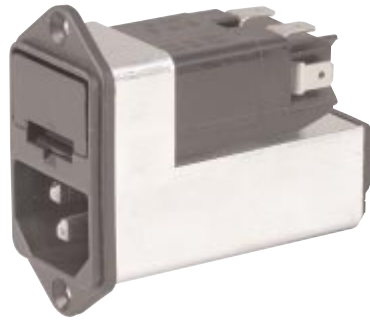


With fuseholder 5x20 mm / 6.3x32 mm, with or without voltage selector (step switch)

Standard- or Medical-Filter



with voltage selector



without voltage selector

C14



70° C



### Description

- Panel Mount:  
Screw-on from front side
- 4 Functions:  
Inlet Protection class I, Fuseholder with interchangeable fuse drawer for Fuse-links 5 x 20 mm or 6.3 x 32 mm, with or without voltage selector (step switch), Line filter in standard and medical version
- Quick connect terminals 4.8 x 0.8 mm
- Alternative: version without line filter KEC

### Approvals

- VDE License Number: 40004665
- UL License Number: E76360

### Characteristics

- All single elements are already wired
- The fuse drawer "Fingergrip" can be removed by hand  
For added safety "Extra-Safe" fuse drawers are available  
Fuse drawer meets requirements of medical standard IEC/EN 60601-1  
The fuse drawer can only be opened with the aid of a tool  
The fuseholder is accessible from the equipment front
- Qualified for use in equipment according IEC/EN 60950

### References

General Product Information see page 282

### Weblinks

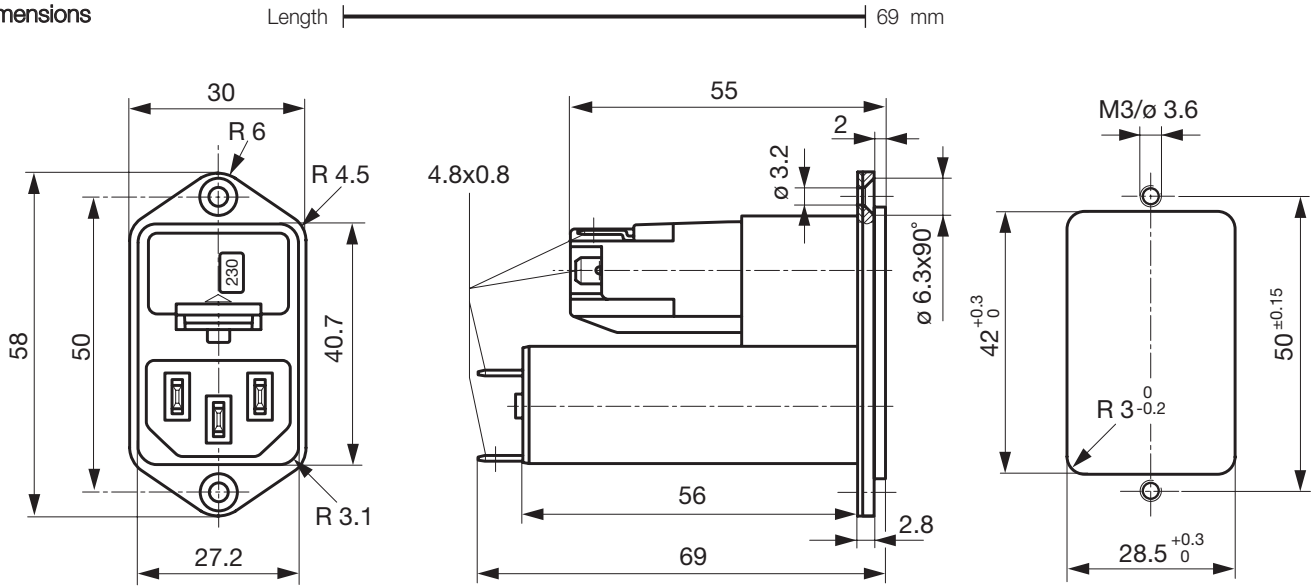
Approvals:  
RoHS:

### Technical Data

Ratings IEC	1 - 10 A @ Ta 40 °C / 250 VAC; 50 Hz
Ratings UL/CSA	1 - 10 A @ Ta 40 °C / 125 VAC; 60 Hz
Leakage Current	standard < 0.5 mA (250 V / 60 Hz) medical < 5 µA (250 V / 60 Hz)
Dielectric Strength	> 1.7 kVDC between L-N > 2.7 kVDC between L/N-PE Test voltage (2 sec)
Allowable Operation Temp.	-25 °C to 85 °C
Climatic Category	25/085/21 acc. to IEC 60068-1
Degree of Protection	from front side IP 40 acc. to IEC 60529
Protection Class	Suitable for appliances with protection class I acc. to IEC 61140
Terminals	Quick connect terminals 4.8 x 0.8 mm
Panel Thickness s	Screw-on: max 8 mm Mounting screw torque max 0.5 Nm
Material: Housing	Thermoplastic, Black, UL 94V-0

Appliance-Inlet /-Outlet	C14 acc. to IEC/EN 60320-1, UL 498, CSA C22.2 no. 42 (for cold condition) pin-temperature 70 °C, 10 A, Protection class I
Fuseholder	1- or 2-pole, Shocksafe category PC2 acc. to IEC 60127-6, for fuse-links 5 x 20 or 6.3 x 32 mm
Rated Power Acceptance @ Ta 23 °C	5 x 20: 2.5 W (1-pole)/ 2 W (2-pole) per pole 6.3 x 32: 3.15 W (1-pole)/ 2.5 W (2-pole) per pole
Power Acceptance @ Ta > 23 °C	Admissible power acceptance at higher ambient temperature see derating curves
Voltage selector	optional, step, 3 digits
Line Filter	Standard and Medical Version, IEC 60939, IEC 60601-1, UL 1283, UL 544, EN 133 200, CSA C22.2 no. 8 Technical details see WEBXXX
MTBF	> 1'700'000 h acc. to MIL-HB-217 F

Dimensions



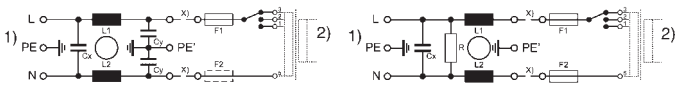
Technical Data of Filter-Components

Rated Current [A]	Filter-Type	Inductances		Capacitance		R [MΩ]
		L [mH]	CX [nF]	Capacitance CY [nF]		
1	Standard Version	2 x 10	68	2.2		
2	Standard Version	2 x 4	68	2.2		
4	Standard Version	2 x 1.5	68	2.2		
6	Standard Version	2 x 0.8	68	2.2		
10	Standard Version	2 x 0.3	68	2.2		
1	Medical Version (M5)	2 x 10	68			1
2	Medical Version (M5)	2 x 4	68			1
4	Medical Version (M5)	2 x 1.5	68			1
6	Medical Version (M5)	2 x 0.8	68			1
10	Medical Version (M5)	2 x 0.3	68			1

Diagrams

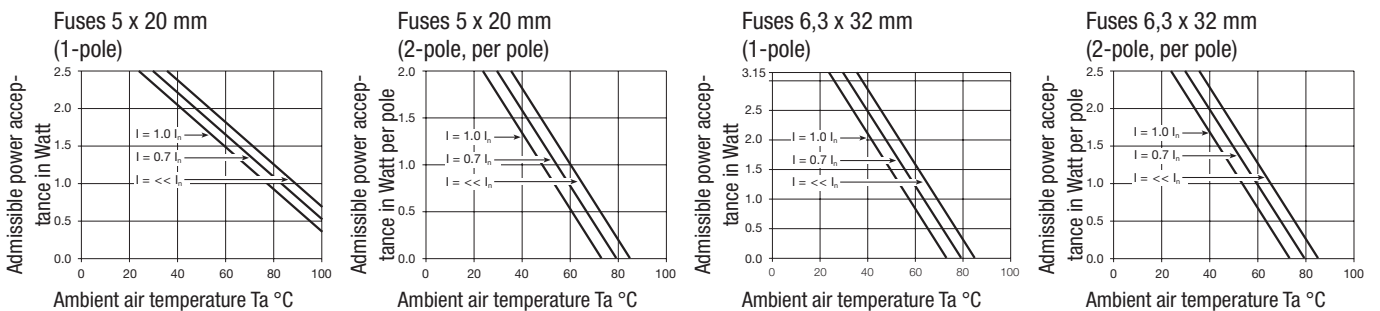
Standard version with voltage selector

Medical version with voltage selector



- 1) Line
- 2) Load
- x) External connection to be made by the customer

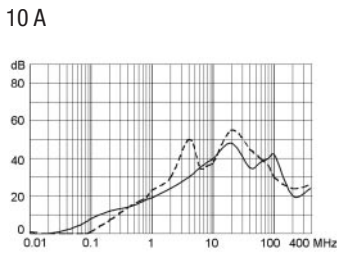
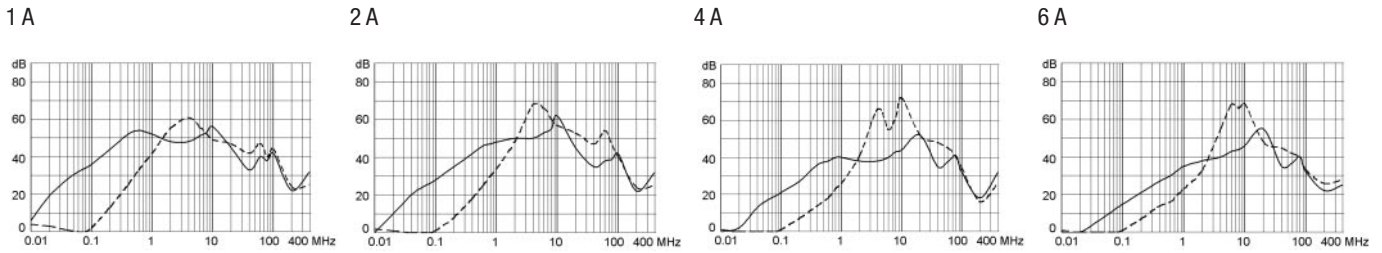
Derating curves



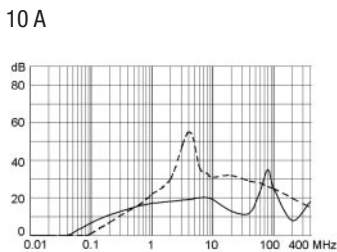
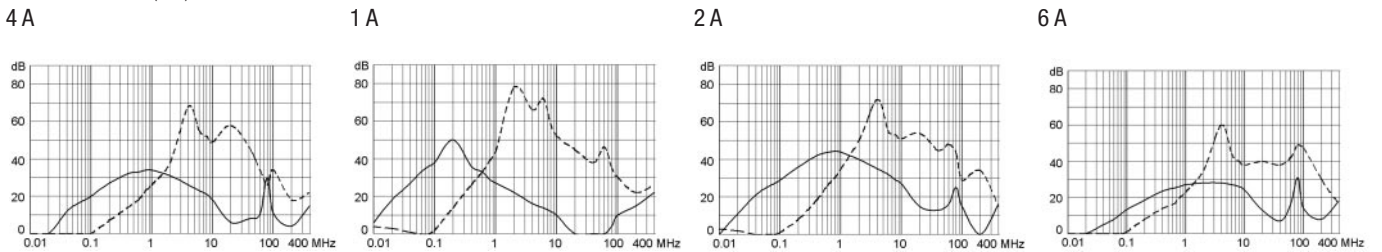
**Attenuation loss**

--- differential mode \_\_\_\_ common mode

Standard version



Medical version (M5)



**Variants**

Fuse drawer must be ordered separately (See accessories).

Rated Current [A]	Filter-Type	Fuseholder	Voltage selector	Order Number
1	Standard Version	1-pole		4303.5011
2	Standard Version	1-pole		4303.5012
4	Standard Version	1-pole		4303.5013
6	Standard Version	1-pole		4303.5014
10	Standard Version	1-pole		4303.5015
1	Standard Version	1-pole	3 digits	4303.5031
2	Standard Version	1-pole	3 digits	4303.5032
4	Standard Version	1-pole	3 digits	4303.5033
6	Standard Version	1-pole	3 digits	4303.5034
10	Standard Version	1-pole	3 digits	4303.5035
1	Standard Version	2-pole		4303.5001
2	Standard Version	2-pole		4303.5002
4	Standard Version	2-pole		4303.5003
6	Standard Version	2-pole		4303.5004
10	Standard Version	2-pole		4303.5005
1	Standard Version	2-pole	3 digits	4303.5021
2	Standard Version	2-pole	3 digits	4303.5022