

Insulating cover

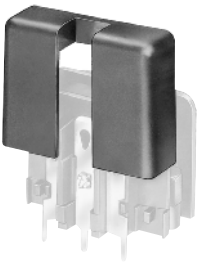
The terminals of the Schurter appliance couplers can be protected against unintentional contact by the use of an insulation cover.

They are made of flexible thermoplastic (UL 94V-0, black) and can be easily mounted from the rear to the corresponding appliance couplers.

Order Numbers

| | suitable for |
|-----------|---|
| 0859.0047 | KEA (without KEA-Print) KEB1, DC11, 6200, 6202, 6205, 6220, 4721, 4723, 4793, 4798, 6600-3, 6600-4, 4707, C20F |
| 0859.0048 | 6100-3, 6100-4, 6102-3, 6102-5, 5110, FGS, KFS, KFX |
| 0859.0072 | KEC, KFC, FKH, FKI, FKHD, FKID |
| 0859.0074 | KD, 5145, 6145 |
| 0859.0075 | KEB2, KFB2, 0723, 4797, DC12, KFB1, 4719, KFA, 5200, 5220 |
| 0859.0076 | KE, KM, KMF, EC11, EC12 |
| 0859.0077 | CD |
| 0859.0108 | CE, EC12 |
| 0859.0109 | CG, KG, EF11, DF12, DF11 |
| 0859.0086 | 8843-FL, 8843-FLR |

Cover GSF1



Order Number

0098.0078

Cord retaining kits

For protection against loosening or accidental disconnection of the plug connector. Can also be mounted later.

The correct kit type (A-M) for each combination of fixed and free components is shown in the selection chart on page 172. The corresponding Order No. for each kit type is shown in the smaller chart.

Horizontal flanged components are secured to the panel using the kit supplied. Vertical flanged or snap-in components require additional drilling for the cord retaining kit as shown in the diagrams below.

Each cord retaining kit consists of:

- 1 Stainless steel retaining clip
- 2 Nickel plated brass pillars
- 2 Nickel plated brass nuts
- 2 Nickel plated beryllium copper crinkle washers

| Order Numbers | Kit type |
|---------------|----------|
| 4700.0001 | A |
| 4700.0002 | B |
| 4700.0003 | C |
| 4700.0004 | D |
| 4700.0005 | E |
| 4700.0006 | F |
| 4700.0007 | G |
| 4700.0008 | H |
| 4700.0009 | J |
| 4700.0010 | K |
| 4700.0011 | L |
| 4700.0012 | M |

Cut-aways or countersinks on pillars to face inwards.



