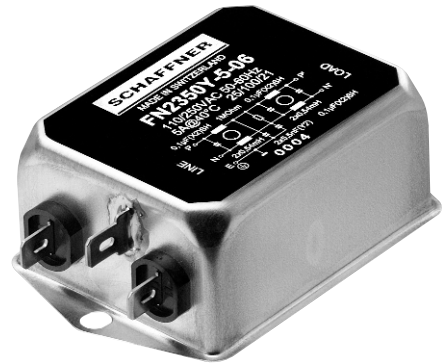


# Single-phase chassis-mounting filter FN 2350

- Current ratings from 2 to 10A
- Exceptional differential and common mode attenuation
- UL-rated materials
- Nennströme von 2 bis 10A
- Sehr hohe Gleich- und Gegentaktdämpfung
- UL konformes Material
- Courants de service de 2 à 10A
- Très bonne atténuation en modes différentiel et commun
- Matériaux UL



## Filter selection table

Filter	Conn. / Housing		Current ratings @40°C (25°C) A	Inductance		Capacitance		Resistance R MΩ	Weight g
				L mH	L1 mH	Cx μF	Cy nF		
FN 2350Y-2-06	Fast-on	H2	2 (2.25)	0.52	0.52	0.1	5.5	1	115
FN 2350Y-3-06	Fast-on	K1	3 (3.35)	1.7	1.7	0.1	5.5	1	175
FN 2350Y-5-06	Fast-on	K1	5 (5.6)	0.54	0.54	0.1	5.5	1	175
FN 2350Y-10-06	Fast-on	K2	10 (11.2)	0.54	0.54	0.1	5.5	1	225

## Approvals

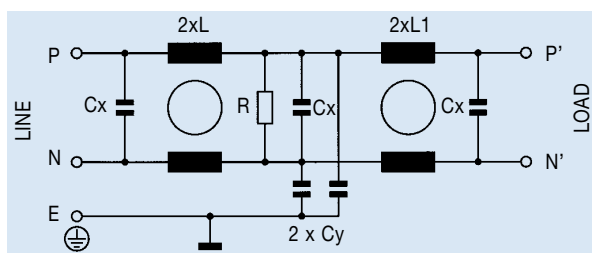


## Additional specifications

Filter type	Maximum operating voltage		Operating frequency Hz	Hipot test voltage		Maximum leakage @ 230VAC/50Hz mA	Temperature range
	VAC	Hz		PN→E VAC	P→N VAC		
All types	250	50/60	DC to 400	2000	760	0.94	-25°C - +100°C

MTBF at 40°C, 230V, per Mil-HB-217F: 2,200,000 hours.

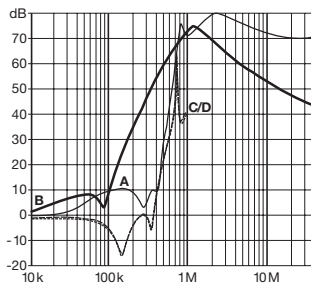
## Electrical schematic



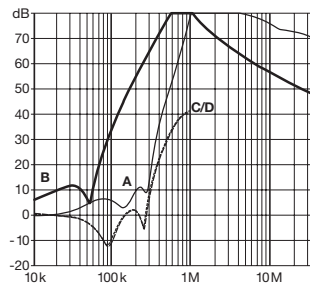
## FN 2350 insertion loss

Per CISPR 17; A = 50Ω/50Ω sym, B = 50Ω/50Ω asym, C = 0.1Ω/100Ω sym, D = 100Ω/0.1Ω sym

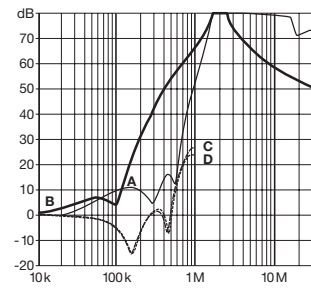
### 2 amp types



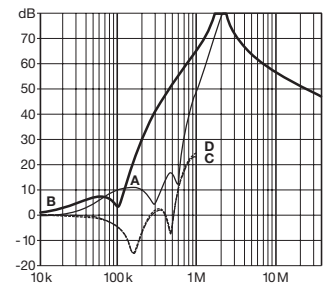
### 3 amp types



### 5 amp types

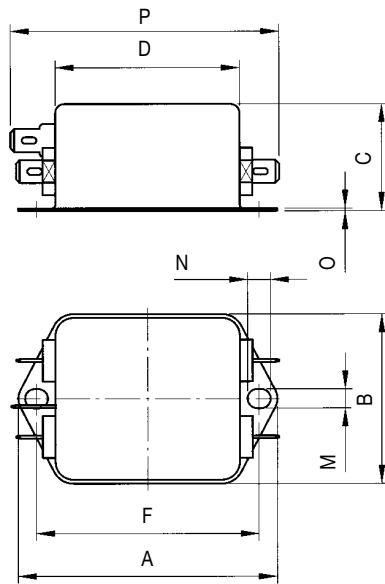


### 10 amp types



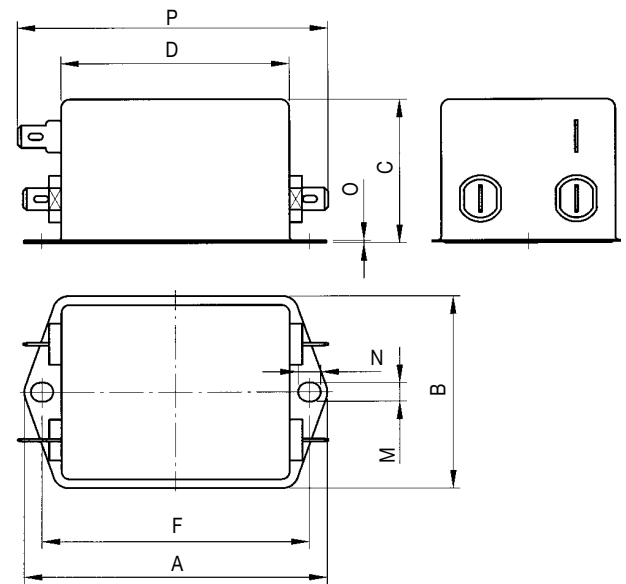
## Mechanical data

-2A, -3A, -5A



Housing H2, K1

-10A



Housing K2

### FN 2350Y

	2A	3A	5A	10A	Tol. [ mm ]
A	71		85		± 0.5
B	46.6		54		± 0.5
C	29.3		30.3	40.3	± 0.5
D	50.5		64		± 0.5
F	61		75		± 0.3
M			5.3		± 0.1
N			6.3		± 0.1
O			0.7		± 0.1
P	74		87		± 1

All dimensions in mm; 1 inch = 25.4mm.