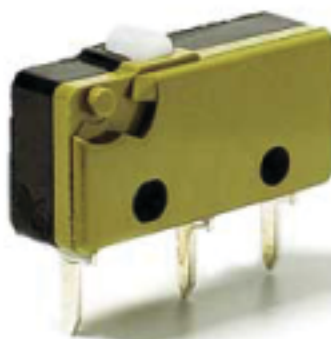




XC

Type	<ul style="list-style-type: none"> • Switches
Product type	<ul style="list-style-type: none"> • Saia Submini Micro switch
Typical markets	<ul style="list-style-type: none"> • home appliances • leisure & fitness • business machines • building automation & security • distribution
Typical applications	<ul style="list-style-type: none"> • home coffee automate with grinders • vending machines • circuit breakers • ATM (automated teller machine) • doors, building entrances • gates, vehicle entrances • gaming machines • international catalog distributors
Dimensions	<ul style="list-style-type: none"> • 19.9 x 9.5 x 6.4 mm
Characteristics	<ul style="list-style-type: none"> • wide range of forces and variants • long mechanical and electrical life • solder, faston and PCB terminals
Rating	<ul style="list-style-type: none"> • 250 VAC, 10 A max.



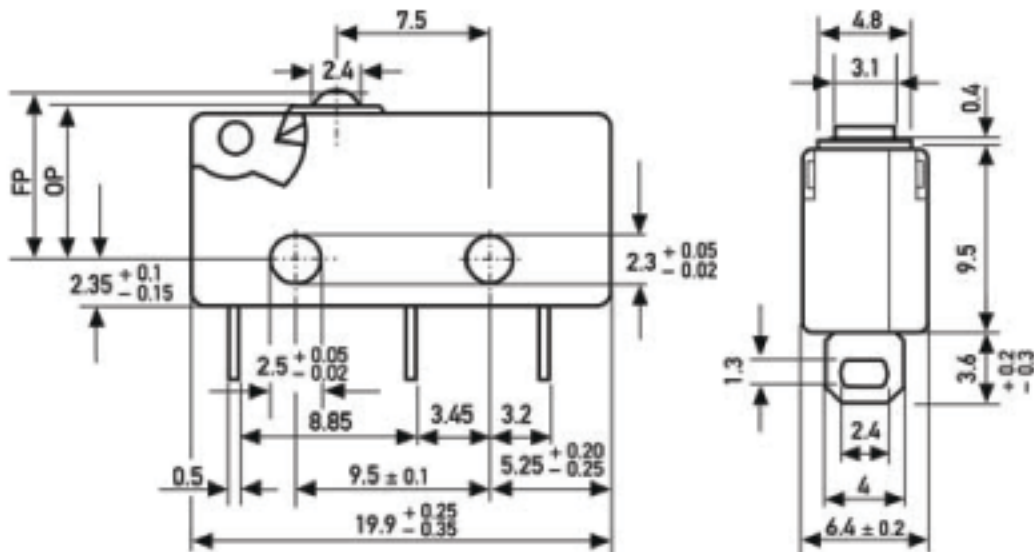
Actuators

- plunger
- mushroom plunger reset
- plain lever
- simulated roller lever / cam follower
- roller lever

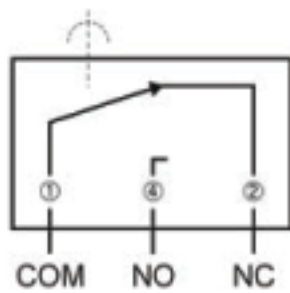
Approvals/Quality

- ENEC
- UL
- cUL
- CSA

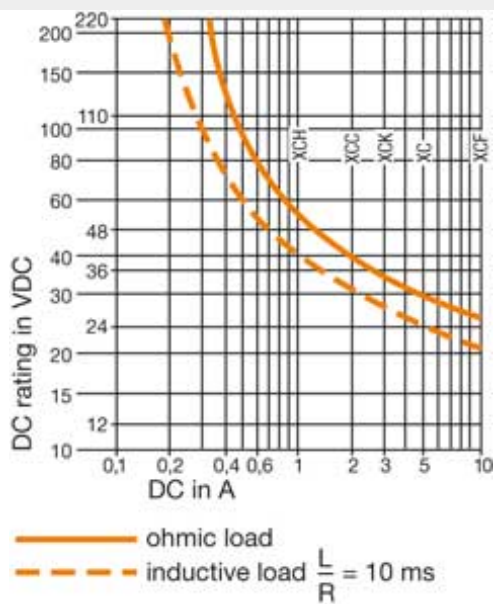
Dimensions



Circuits



Performance



Preferred range

Partnumber	Terminal	Actuator	Electrical rating @	
			ENEC	UL/CSA
<u>XCG3Z1</u>	solder	plunger	250 VAC 6 (2) A, 5E4 A	250 VAC 5 A
<u>XCG5Z1</u>	faston 2.8 x 0.5 mm	plunger	250 VAC 6 (2) A, 5E4 A	250 VAC 5 A
<u>XCF3Z1</u>	solder	plunger	250 VAC 10 (3) A, 1E4 A	250 VAC 10.1 A
<u>XCG3-U1Z1</u>	solder	mushroom plunger	250 VAC 6 (2) A, 5E4 A	250 VAC 5 A
<u>XCG4-U1Z1</u>	faston 2.8 x 0.5 mm	mushroom plunger	250 VAC 6 (2) A, 5E4 A	250 VAC 5 A
<u>XCG8-U1Z1</u>	PCB	mushroom plunger	250 VAC 6 (2) A, 5E4 A	250 VAC 5 A
<u>XCG3-J1Z1</u>	solder	plain lever 18.0 mm	250 VAC 6 (2) A, 5E4 A	250 VAC 5 A
<u>XCG5-J1Z1</u>	faston 2.8 x 0.5 mm	plain lever 18.0 mm	250 VAC 6 (2) A, 5E4 A	250 VAC 5 A
<u>XCF3-J1Z1</u>	solder	plain lever 18.0 mm	250 VAC 10 (3) A, 1E4 A	250 VAC 10.1 A
<u>XCG8-81Z1</u>	PCB	plunger	30 VAC 0.3 (0.1) A, 5E4 A	125 VAC 0.1 A
<u>XCG8-81J1Z1</u>	PCB	plain lever 18.0 mm	30 VAC 0.3 (0.1) A, 5E4 A	125 VAC 0.1 A
<u>XCG3-S1Z1</u>	solder	roller lever 16.0 mm	250 VAC 6 (2) A, 5E4 A	250 VAC 5 A



XCG3-S1Z1

Dimensions	19.9 mm
Dimensions	9.5 mm
Dimensions	6.4 mm
Terminal	solder
Circuit	CO
Actuator	roller lever 16.0 mm
Contacts	Ag
Electrical rating ENEC	250 VAC
Electrical rating UL/CSA	250 VAC
Actuating force	0.7 Nm
Release force	0.09 N
Free position (FP)	17.6 mm
Operating position (OP)	15.6 ±1.1 mm
Movement differential	0.5 mm
Total travel position (TP)	14.2 mm