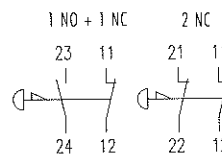
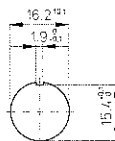
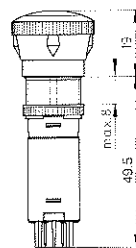


IP66/IP67
Panel cut-out 16.2 mm


- mushroom cap \varnothing 24 mm
- positive opening operation
- light action, suitable for smaller equipment
- faston terminals 2.8 x 0.5 mm
- weight: 13.8 g

	mushroom cap with printing	mushroom cap without printing
1NC+1NO	880 003 000	880 103 000
2NC	880 004 000	880 104 000



Actuating force	Approx. 6 N pushbutton switches Approx. 32 N emergency stop switches Approx. 25 N mushroom switches			
Fixation	Pushbutton switches: central, with metal fixation nut; flat bezel fixation also with mounting frame Key and rotary switches / emergency stop switches / mushroom switches: central, with metal fixation nut Mushroom switches with key reset: central, with anti-rotation device and metal fixation nut			
Protective system	Generally: IP66/IP67, exception: mushroom switch IP40 with key reset			
Bezel material	Thermoplast or nickel plated brass			
Lens material	Thermoplast (polycarbonate in different colours) engravable			
Illumination	T 1 1/4 Bi-Pin lamps max. 60V 0.7W Please respect the safety regulations when using the indicator light.			
Ambient temperature	-25° upto +55°C Heat congestion should be avoided			
Life expectancy mechanical operating cycles	Pushbutton switches: 1'000'000	Key, rotary and mushroom switches: 50'000	Emergency stop: 30'000	Mushroom switch with key: 25'000
Contact block 6A	factory fitted onto the switch			
Casing material	Thermoplast			
Terminal material	Silver nickel, 0.4 µm gold plated			
Contact resistance	< 30 mOhm			
Number of contacts	Pushbutton, key and rotary switches: 1NC + 1NO 2NC 2NO circuits independent of each other		Emergency stop switches and mushroom switches: 1NC + 1NO 2NC circuits independent of each other	
Terminals	Faston terminals 2.8x0.5 mm for faston plugs according to DIN 46247 Please respect the installation regulations!			
Switching mechanism	Pushbutton, key and rotary switches: self cleaning snap-action contacts bounce time < 1 msec		Emergency stop and mushroom switches: self cleaning contacts with positive opening operation, bounce time < 1 msec	
Contact gap	> 3 mm			
Switching capacity	6A, 230V AC, utilization category AC-15 according to IEC 947-5-1, recommended miniature breaker type C 6A			
Life expectancy electrical	20'000 operating cycles - 10A 24V DC13	50'000 operating cycles 6A 250V AC12 5A 24V DC13	100'000 operating cycles - 5A 12V DC13	300'000 operating cycles 2.5A 250V AC12 -