

THIS STYLE ON
VM-1030 ONLY



THIS STYLE ON
VM-1024 ONLY

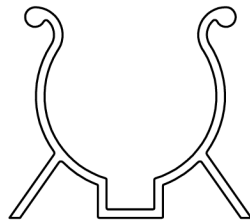
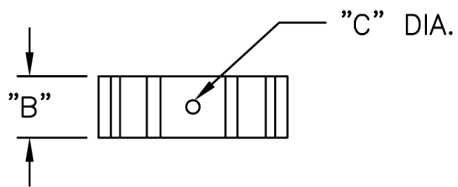
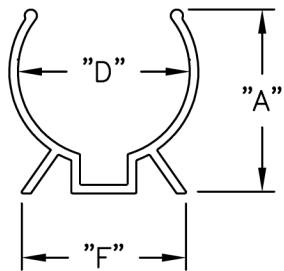
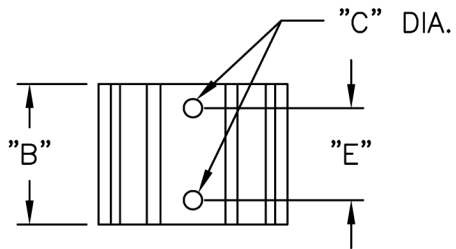
Part Number

Description

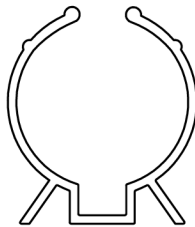
[VM-1008](#)

Clip,Screw Mnt,Black,.75" Hold





THIS STYLE ON
VM-1030 ONLY



THIS STYLE ON
VM-1024 ONLY

PART NO.	DIA. TO BE HELD "D"	"A" REF.	"B" ±.015 (0.38)	"C" ±.010 (0.25)	"E" ±.010 (0.25)	"F" REF.
VM-1002	3/8 (9.5)	.44 (11.2)	.50 (12.7)	.110 (2.8)	SINGLE HOLE IN CENTER	.54 (13.7)
VM-1004	1/2 (12.7)	.52 (13.2)				.75 (19.1)
VM-1007	11/16 (17.5)	.78 (19.8)				.82 (20.8)
VM-1008	3/4 (19.1)	.97 (24.6)				.98 (24.9)
VM-1010	1 (25.4)	1.03 (26.1)	1.12 (28.4)	.150 (3.8)	.750 (19.1)	1.25 (31.8)
VM-1011	1-3/8 (34.9)	1.51 (38.4)	1.16 (29.5)			1.37 (34.8)
VM-1024	1-1/2 (38.1)	1.67 (42.4)	1.70 (43.2)			1.50 (38.1)
VM-1030	2-1/4 (57.2)	2.50 (63.5)	1.52 (38.6)			3.00 (76.2)

NOTES:

1. MATERIAL: NYLON 6/6 (RMS-01C).
2. COLOR: BLACK.

B	SEE ECN #499 FOR CHANGES	SM 10.24.02
A	CHANGED FILE NO.	SM 10.17.02
REV	DESCRIPTION	ENGR DATE

TITLE: COMPONENT CLIPS, MOLDED					DWG IN IN (MM)	
TOLERANCES UNLESS NOTED .XX=±.010 .XXX=±.005 FRAC=±1/64 ANG=±1°	FILE # VM	DWN: P.B.	DT: 08-03-94	FINAL		
MAT'L: SEE NOTES	RE: RICHCO, INC.	CHKD:	ENGR:	PART #	PRINT TYPE	
			RICHCO INC.	SEE TABLE	CA	