

See "Part Drawing" for Details

Part Number

Description

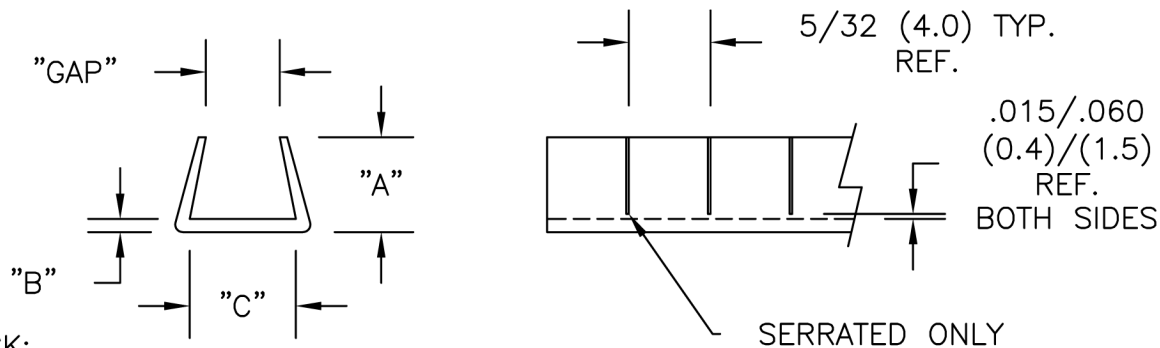
[SNGS-2.5](#)

Grmt,Roll,Serrated, Nat,.072-.105"



PART NO.		MATERIAL	"A" REF.	"B" REF.	"C" REF.	PANEL THICKNESS RANGE	"GAP" REF.	
SOLID LENGTHS	SERRATED LENGTHS							
*NGS-1	SNGS-1	NYLON (RMS-21)	.125 (3.2)	.031 (0.8)	.031 (0.8)	.026-.036 (0.7-0.9)	.018 (0.5)	
*NGS-2	SNGS-2		.172 (4.4)		.109 (2.8)	.037-.071 (0.9-1.8)	.037 (0.9)	
NGS-2.5	SNGS-2.5		.188 (4.8)		.156 (4.0)	.072-.105 (1.8-2.7)	.060 (1.5)	
*NGS-3	SNGS-3		POLYETHYLENE (RMS-06)	.125 (3.2)	.031 (0.8)	.106-.164 (2.7-4.2)	.106 (2.7)	
**NGS-4	SNGS-4					.188 (4.8)	.165-.187 (4.2-4.7)	.165 (4.2)
*NGS-5	SNGS-5					.250 (6.4)	.188-.250 (4.8-6.4)	.187 (4.8)
PGS-1	SPGS-1	POLYETHYLENE (RMS-06)		.172 (4.4)	.031 (0.8)	.026-.036 (0.7-0.9)	.018 (0.5)	
PGS-2	SPGS-2					.037-.071 (0.9-1.8)	.037 (0.9)	
PGS-2.5	SPGS-2.5		.072-.105 (1.8-2.7)			.060 (1.5)		
PGS-3	SPGS-3		.188 (4.8)	.047 (1.2)	.156 (4.0)	.106-.164 (2.6-4.2)	.106 (2.7)	
*PGS-4	SPGS-4				.188 (4.8)	.165-.187 (4.2-4.7)	.165 (4.2)	
*PGS-5	SPGS-5			.250 (6.4)	.188-.250 (4.8-6.4)	.187 (4.8)		

*BLACK PARTS AVAILABLE BY SPECIAL ORDER ONLY
 ** PART AVAILABLE BY SPECIAL ORDER IN BOTH COLORS



- NOTES:
 1. COLOR: NATURAL OR BLACK;
 ADD SUFFIX "B" FOR BLACK
 2. LENGTH: 100 FT (3048 cm).

I	SEE CO 200035 FOR CHANGES	SK 09.26.07
H	SEE ECN 899	SM 01.03.05
G	RMS-06 WAS RMS-13	DLC 12.11.01
F	REVISED .015/.060 (.4)/(1.5) WAS .015/.055 TABLE CORRECTED PER NGS PRINT	DLC 7/31/01
E	AND CHANGED FROM FRACTIONAL TO DECIMAL	SM 07.24.01
D	CHANGED FILE NO.	SM 06.27.01
C	TABLE CORRECTED	SM 04.10.01
B	ADDED PGSR & SPGSR SERIES	JB 07.10.96
A	CONVERTED TO ACAD	PB 06.28.95
REV	DESCRIPTION	ENGR DATE

TITLE: GROMMET STRIP-SERIES				DWG IN IN (MM)	FINAL
TOLERANCES UNLESS NOTED .XX=±.020 .XXX=±.015 FRAC=±1/64 ANG=±1°	FILE # NGS	DWN: P.B.	APP:	PART #	
	MAT'L: SEE NOTES	DT: 06-28-95	DT:	SEE TABLE	
	RE: RICHCO, INC.	RICHCO INC.		PRINT TYPE CA	