

BUMPERS AND FEET

- Moulded rubber bumpers
- Rivet fastened feet
- Push on feet

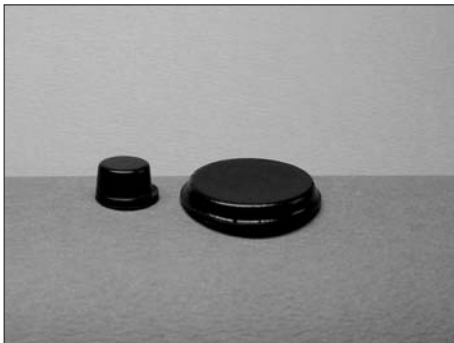
F

BUMPERS AND FEET



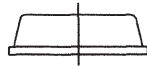
RBS

MOULDED BUMPERS



Part No.	Diameter Ø mm	Height mm	Std. Pk.	Carton qty.	Standard-Colour
RBS-1	12.7	3.5	200	5.000	CL, BLK, WH, BR, GR
RBS-5	12.7	1.6	200	5.000	CL, BLK
RBS-6	12.7	6.3	200	5.000	CL, BLK
RBS-11	15.9	10.1	128	2.560	CL, BLK
RBS-18	12.7	3.5	200	5.000	CL, BLK
RBS-24	20.5	3.1	72	2.520	CL, BLK, WH
RBS-34	9.5	3.1	300	6.000	CL, BLK
RBS-35	9.5	4.8	200	5.000	CL, BLK
RBS-41	20.0	5.1	72	3.360	CL, BLK
RBS-44	19.1	4.1	98	2.450	CL, BLK

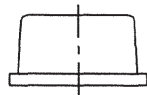
RBS-1



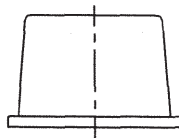
RBS-5



RBS-6



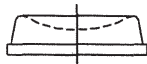
RBS-11



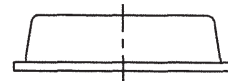
RBS-34



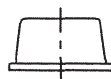
RBS-18



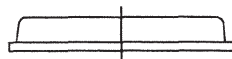
RBS-41



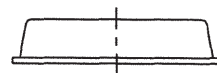
RBS-35



RBS-24



RBS-44



Colour Code Guide	
Colour	Code
clear	CL
black	BLK
white	WH
brown	BR
grey	GR

Note:

RBS	1	CL
Part	Type	Colour Code

Other Colours available by special order.

Material: Polyurethane, UL 94 HB, Shore A 60-70, RMS-64
 Tape: transparent Tape: Synthetic Rubber, RMS-68
 colour Tape: Acrylic, RMS-65
 Std. Pk.: see table

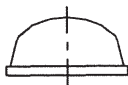
BUMPERS AND FEET



RBS

HEMISPHERICAL MOULDED BUMPERS

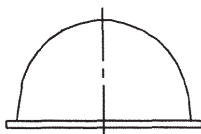
RBS-2



RBS-7



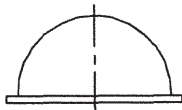
RBS-8



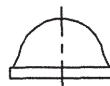
RBS-12



RBS-15



RBS-22



RBS-27



RBS-39



RBS-40



Part No.	Diameter Ø mm	Height mm	Std. Pk.	Carton qty.	Standard-Colours
RBS-2	11.1	5.1	242	5.082	CL, BLK, WH, BR, GR
RBS-7	8.5	2.2	450	5.400	CL, BLK
RBS-8	17.6	9.6	98	2.234	CL, BLK, WH
RBS-12	9.5	3.8	200	5.000	CL, BLK
RBS-15	16.0	7.9	128	3.200	CL, BLK, WH
RBS-22	9.5	5.4	288	3.584	CL
RBS-27	7.9	2.2	450	5.400	CL, BLK
RBS-39	19.1	1.9	84	5.040	CL, BLK
RBS-40	6.4	1.6	578	15.028	CL, BLK

Colour Code Guide	
Colour	Code
clear	CL
black	BLK
white	WH
brown	BR
grey	GR

Note:

RBS	27	CL
Part	Type	Colour Code

Material: Polyurethane, UL 94 HB, Shore A 60-70, RMS-64
 Tape: transparent Tape: Synthetic Rubber, RMS-68
 colour Tape: Acrylic, RMS-65
 Std. Pk.: see table

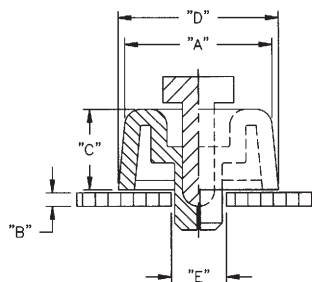
F



SFF

SOFT FAST FEET

Part No.	Hole "E" Ø mm	"B" mm	"A" mm	"C" mm	"D" mm
SFF-018	7.8	0.8 - 1.5	18.0	9.9	20.1
SFF-021		5.0 - 8.0	20.1	6.1	21.1
SFF-023		0.8 - 1.5	23.1	5.1	24.9
SFF-028		0.8 - 1.5	18.0	15.0	20.1

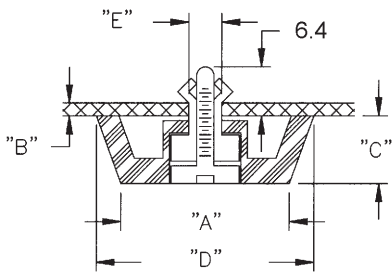


Note:

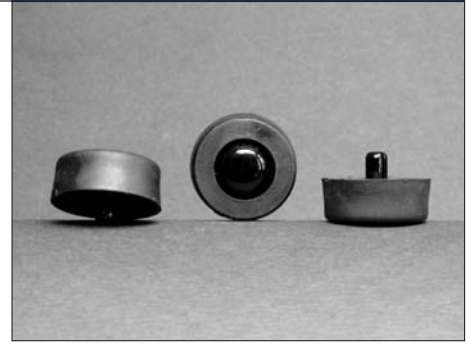
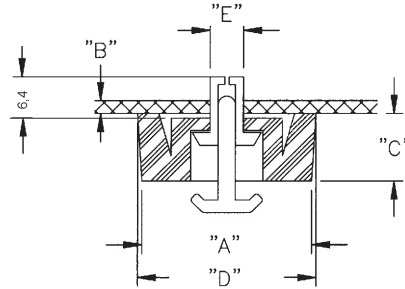
SFF	018
Part	Size

Material: Foot: Santoprene - black, UL 94 HB, RMS-42
 Pin: Polypropylene - black, RMS-126
 Std. Pk.: 100 pcs.

STYLE 1



STYLE 2



FF

FAST FEET

Part No.	Hole "E" mm	"B" mm	"A" mm	"C" mm	"D" mm	Style			
FF-001B	5.0 - 5.1	1.0 - 2.3	20.0	14.0	24.0	1			
FF-004B		1.0 - 2.3	18.0	10.0	20.0				
FF-003-P3X5.5B	3.1 - 3.2	0.8 - 1.8	13.5	5.5	14.2	2			
FF-005-P4X5B	4.1 - 4.2	0.8 - 1.8	20.0	4.2	21.0				
FF-005-P4X6B		1.8 - 2.8							
FF-005-P4X7B		2.9 - 3.7							
FF-005-P4X8B		3.8 - 4.8							
FF-006-P4X6B	5.1 - 5.2	0.6 - 1.0	14.0	6.0	15.0				
FF-006-P4X7B		1.0 - 2.0							
FF-006-P4X8B		2.0 - 3.1							
FF-006-P5X6.5B	5.1 - 5.2	0.8 - 1.2	20.0	6.0	21.0				
FF-008-P4X6B	4.1 - 4.2	0.8 - 1.8							
FF-008-P4X7B		1.9 - 2.8							
FF-008-P4X8B		2.9 - 4.0							
FF-009-P4X6B		0.1 - 0.8							
FF-009-P4X7B		0.8 - 2.0							
FF-009-P4X8B		2.1 - 3.1							
FF-010-P4X6B	5.1 - 5.2	0.6 - 1.0					14.0	9.0	15.0
FF-010-P4X7B		1.0 - 2.0							
FF-010-P4X8B		2.0 - 3.1							
FF-010-P5X6.5B	3.6 - 3.7	0.8 - 1.2	10.0	4.0	10.8				
FF-010-P5X7.5B		1.2 - 2.2							
FF-013-P3.5X4.5B	3.6 - 3.7	0.5 - 1.2							
FF-013-P3.5X5.5B		1.2 - 2.0							
FF-013-P3.5X6B		1.5 - 2.2							
FF-013-P3.5X7B		2.5 - 3.2							
FF-013-P3.5X8B		3.5 - 4.2							

Material:
 Foot: thermoplastic rubber
 black, UL 94 HB, RMS-76
 Rivet:
 Style 1: Acetal - black, UL 94 HB, RMS-14
 Style 2: Nylon 6 - black, UL 94 V-2, RMS-28
 Std. Pk.: 100 pcs.

Note:

FF	001B
Part	Size