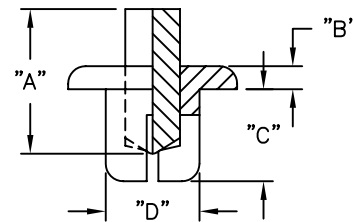
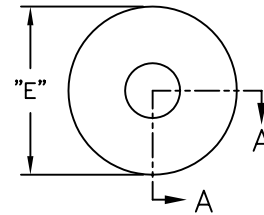


PART NO.	HOLE DIA.	PANEL THICKNESS	"A"	"B"	"C"	"D" DIA.	"E" DIA.
PPR-3045	.122 (3.1)	.08-.12 (2.0-3.0)	.35 (8.9)	.08 (2.0)	.18 (4.6)	.118 (3.0)	.23 (5.8)
PPR-3055		.12-.16 (3.0-4.0)			.22 (5.6)		
PPR-4050	.161 (4.1)	.10-.14 (2.5-3.5)	.36 (9.2)	.09 (2.2)	.20 (5.0)	.157 (4.0)	.31 (8.0)
PPR-4060		.14-.18 (3.5-4.5)			.24 (6.0)		
PPR-4850	.189 (4.8)	.05-.12 (1.2-3.0)	.41 (10.4)	.13 (3.3)	.20 (5.1)	.189 (4.8)	.39 (9.9)
PPR-5050	.201 (5.1)	.08-.12 (2.0-3.0)	.37 (9.4)	.11 (2.8)	.20 (5.1)	.197 (5.0)	.37 (9.4)
PPR-5060		.12-.16 (3.0-4.0)			.24 (6.1)		
PPR-5070		.16-.20 (4.0-5.0)	.28 (7.1)				
PPR-5080		.20-.24 (5.0-6.0)	.45 (11.4)				
PPR-5090		.24-.28 (6.0-7.0)	.49 (12.4)				
PPR-5100		.28-.31 (7.0-8.0)	.54 (13.6)		.37 (9.5)		
PPR-6060		.240 (6.1)	.10-.16 (2.5-4.0)		.37 (9.4)		.06 (1.5)



NOTES:

- MAT'L: NYLON 6 (RMS-52)
EXCEPT PPR-6060: POLYETHYLENE (RMS-142)
- COLOR: BLACK.
WHITE AVAILABLE BY SPECIAL ORDER

REARRANGED TABLE BY PART NUMBER MAT'L CHANGED TO RMS 52 & RMS 142			TITLE: PUSH RIVET (BLUNT)			DWG IN IN(MM)		FINAL	
I	SJ 07.17.02	TOLERANCES UNLESS NOTED .XX=±.010 .XXX=±.015 FRAC=1/64 ANG=1°	FILE # PPR-XXXX	DWN: J.B.	APP:	PART #		PRINT TYPE	
H	SM 06.25.02	REMOVED P/N: -4045, -5115, -8515, -8521 ADDED P/N: -3045, -4050, -4060, -5100	MAT'L: SEE NOTES	DT: 12-20-95	DT:	SEE TABLE		CA	
-	-	SEE ENGINEERING FOR REV. A-G	RE: RICHCO, INC.	RICHCO INC. PO BOX 804238, CHICAGO, 60680 (773) 539-4060					
REV	ENGR	DESCRIPTION	DATE						