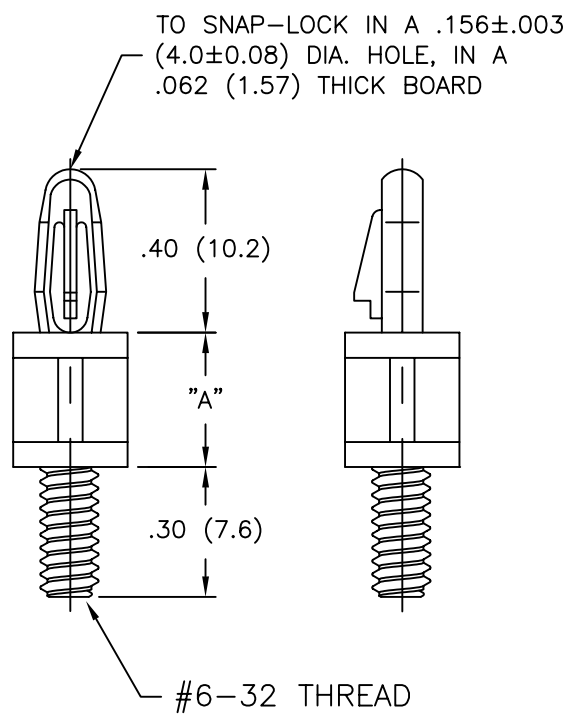
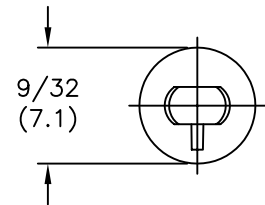


NYLON 6/6 (RMS-01) COLOR: NATURAL PART NO.	FLAME RET. (RMS-19) COLOR: NATURAL PART NO.	DIM. "A" $\pm 0.15$ ( $\pm 0.4$ )
LCBS-TM-4-01	LCBS-TM-4-19	1/4 (6.4)
LCBS-TM-6-01	LCBS-TM-6-19	3/8 (9.5)
LCBS-TM-8-01	LCBS-TM-8-19	1/2 (12.7)
LCBS-TM-10-01	LCBS-TM-10-19	5/8 (15.9)
LCBS-TM-12-01	LCBS-TM-12-19	3/4 (19.1)
LCBS-TM-14-01	LCBS-TM-14-19	7/8 (22.2)
LCBS-TM-16-01	LCBS-TM-16-19	1 (25.4)



NOTES:  
 1. M4 THREAD AVAILABLE BY SPECIAL ORDER ONLY.  
 TO ORDER, ADD "-M4" TO PART NO.  
 EXAMPLE: LCBS-TM-M4-8-XX

TITLE: LCBS, THREADED MALE					DWG IN IN (MM)				
D UPDATED PRINT AND CHANGED FILE NO. SM 05.09.02	C FR-NYLON REMOVED FROM CHART J.L. 2.24.98	B MAT'L RMS-19 ADDED J.L. 12.29.97	A CHANGED CHART AND ADD DIM JB 09.27.95	REV DESCRIPTION ENGR DATE	TOLERANCES UNLESS NOTED .XX= $\pm 0.10$ .XXX= $\pm 0.005$ FRAC= $\pm 1/64$ ANG= $\pm 1^\circ$	FILE # LCBS-TM MAT'L: SEE TABLE RE: RICHCO, INC.	DWN: P.B. DT: 07-08-94 APP: RICHCO INC. PO BOX 804238, CHICAGO, 60680 (773) 539-4060	FINAL PART # SEE TABLE	PRINT TYPE CA