

**Part Number**

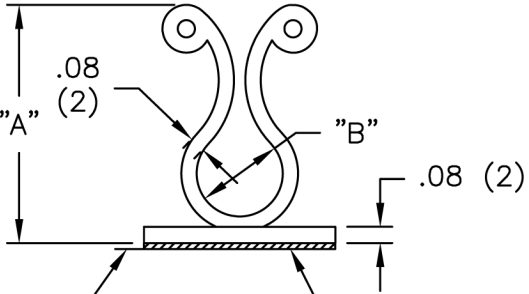
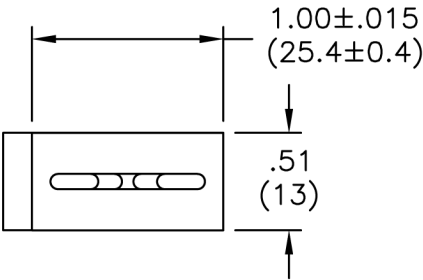
[KLB-450A-RT](#)

**Description**

Curly Lock, Adh Mnt, Nat, .40-.50" Hld



PART NO. W/ADHESIVE	"A" REF.	"B" BUNDLE DIA. RANGE
KLB-350A-RT	1.07 (27.2)	.30-.40 (7.6-10.1)
KLB-450A-RT	1.23 (31.2)	.40-.50 (10.1-12.7)
KLB-750A-RT	1.58 (40.1)	.70-.80 (17.8-20.3)



TYPICAL RELEASE TAB LOCATION

1/32 (0.8) THICK, DOUBLE SIDED ADHESIVE TAPE

NOTES:

1. MATERIAL: NYLON 6/6 (RMS-01).  
FLAME RETARDANT, NYLON (RMS-19),  
AVAILABLE BY SPECIAL ORDER ONLY.
2. COLOR: NATURAL.
3. ACRYLIC ADHESIVE TAPE (RMS-15), WHITE LINER.  
RUBBER ADHESIVE TAPE (RMS-102), BLUE LINER,  
AVAILABLE BY SPECIAL ORDER ONLY.  
TO ORDER USE KLB-XXXXA1-RT.

TITLE: KURLY-LOK ON BASE		DWG IN IN (MM)		FINAL			
FILE #	KLB	DWN:	J.B.	APP:			
MAT'L:	SEE NOTES	DT:	01-23-96	DT:			
RE:	RICHCO, INC.	RICHCO INC.		PART #	SEE TABLE		PRINT TYPE
						CA	

REV	DESCRIPTION	ENGR	DATE
E	SE CO 200118 FOR CHANGES	SK	01.30.08
D	SEE CO 200112 FOR CHANGES	SK	01.24.08
C	ADDED RUBBER ADHESIVE BY SPECIAL ORDER	SM	05.17.02
B	ADDED NOTE 3.	SJ	03.05.02
A	CHANGED FILE NUMBER	SM	05.31.01

TOLERANCES  
UNLESS NOTED  
.XX=±.010  
.XXX=±.005  
FRAC=±1/64  
ANG=±1°