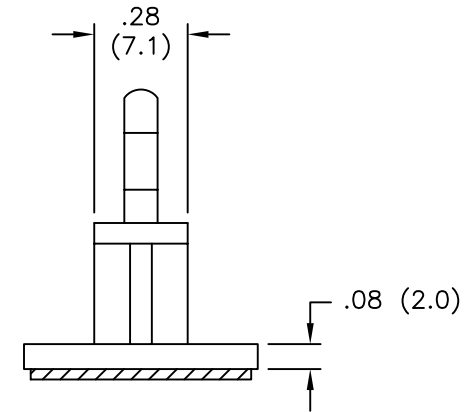
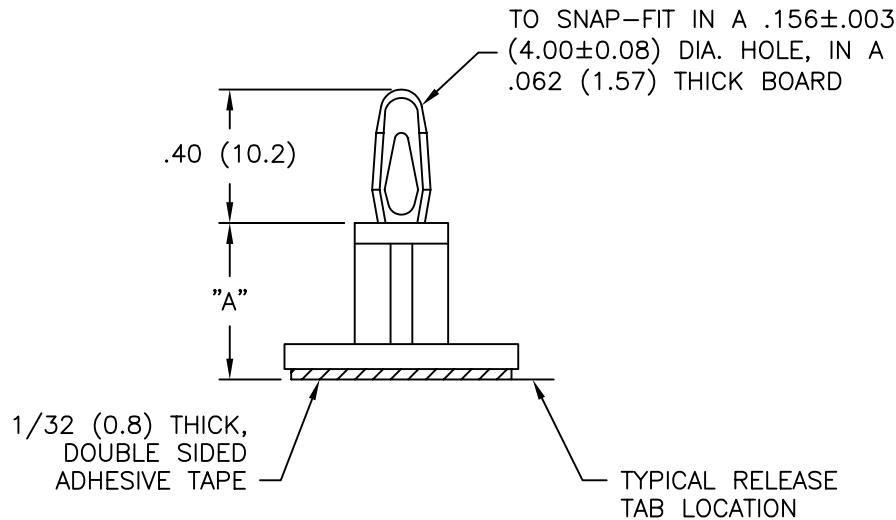


PART NO.	"A" ±.015 (±0.4)
CBSB-3-01A-RT	3/16 (4.8)
CBSB-4-01A-RT	1/4 (6.4)
CBSB-6-01A-RT	3/8 (9.5)
CBSB-8-01A-RT	1/2 (12.7)
CBSB-10-01A-RT	5/8 (15.9)
CBSB-12-01A-RT	3/4 (19.1)
CBSB-14-01A-RT	7/8 (22.2)
CBSB-16-01A-RT	1 (25.4)
CBSB-18-01A-RT	1-1/8 (28.6)



NOTES:

- MAT'L: NYLON 6/6 (RMS-01).
FLAME RETARDANT, NYLON (RMS-19),
AVAILABLE BY SPECIAL ORDER ONLY.
- COLOR: NATURAL.
- ACRYLIC ADHESIVE TAPE (RMS-15), WHITE LINER.
PART ALSO AVAILABLE WITHOUT TAPE.
TO ORDER REMOVE "A-RT" FROM PART NO.
[SUBTRACT 1/32 (0.8) FROM "A" DIM]

B			TITLE: CIRCUIT BOARD SUPPORT ON BASE			DWG IN IN (MM)		FINAL	
UPDATED NOTES AND CHANGED FILE NO.			FILE # CBSB			DWN: P.B.		APP:	
SM 05.08.02			MAT'L: SEE NOTES			DT: 02-06-95		DT:	
A			RE: RICHCO, INC.			RICHCO INC.		PART #	
MAT'L RMS-19 ADDED			RE: RICHCO, INC.			PO BOX 804238, CHICAGO, 60680		SEE TABLE	
J.L. 12.18.97			RE: RICHCO, INC.			(773) 539-4060		PRINT TYPE	
DESCRIPTION			RE: RICHCO, INC.			(773) 539-4060		CA	
ENGR DATE			RE: RICHCO, INC.			(773) 539-4060		CA	