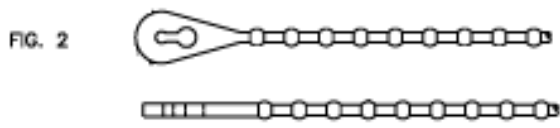
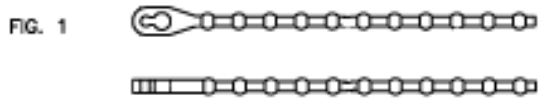


**See "Part Drawing" for Details**



**Part Number**

**Description**

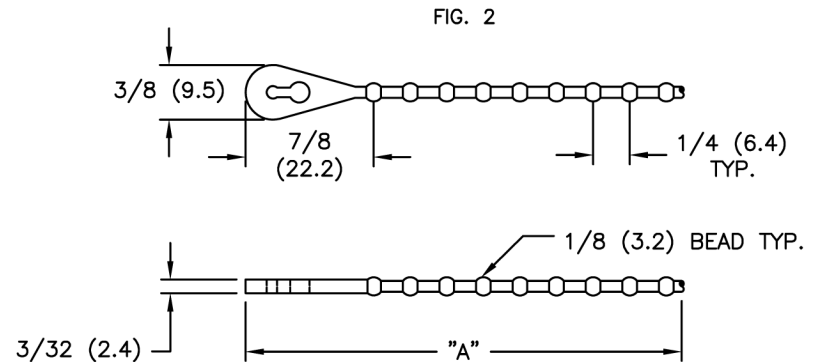
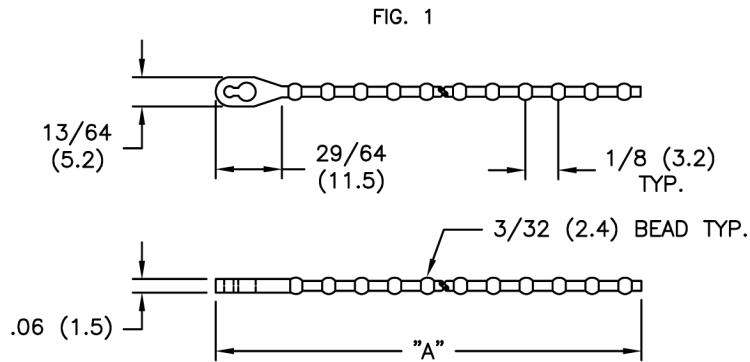
[BT-6-01-NT](#)

Beaded Tie,Rel,Natural,6" Lg



PART NO.	LENGTH "A" APPROX.	*MAX. BUNDLE DIA. REF.	MATERIAL: POLYPROPYLENE (RMS-10); COLOR: RED (-RD)	MATERIAL: POLYPROPYLENE (RMS-10); COLOR: YELLOW (-YL)	MATERIAL: POLYPROPYLENE (RMS-10); COLOR: BLUE (-BL)	MATERIAL: POLYPROPYLENE (RMS-10); COLOR: BLACK (-BK)	MATERIAL: NYLON 6/6 (RMS-01); COLOR: NATURAL AND BLACK	FIGURE NO.
BT-2	2.50 [63.5]	9/16 [14.3]	STANDARD	STANDARD	STANDARD	SPECIAL	SPECIAL	1
BT-4	4.00 [101.6]	1.00 [25.4]				STANDARD	STANDARD	
BT-5	5.00 [127]	1-1/4 [31.8]				SPECIAL	STANDARD	
BT-6	6.00 [152.4]	1-3/4 [44.5]						
BT-8	8.75 [222.3]	2-3/8 [60.3]						
BT-10	10.075 [273.1]	3-1/8 [85.7]						
BT-12	12.75 [323.9]	3-5/8 [92.1]						
							2	

\* ALL MAX. BUNDLE DIA. NEED 3 BEADS ENGAGEMENT.



C	SEE ECN #1089 FOR CHANGES	SK 11/01/05	TITLE: BEADED TIES		DWG IN IN (MM) FINAL			
B	ADDED DIM. .06 TO FIG. 1, RMS NO. TO MAT'L NOTE AND CHANGED FILE NO.	SM 08.03.01	TOLERANCES UNLESS NOTED .XX=±.010 .XXX=±.005 FRAC=±1/64 ANG=±1°	FILE # BT	DWN: JB/PB	APP:	PART #	
A	MAX. BUNDLE DIA. ADDED	J.L. 9.17.97	MAT'L: SEE TABLE	RE: RICHCO, INC.	DT: 11-07-95	DT:	SEE TABLE	
REV	DESCRIPTION	ENGR DATE					PRINT TYPE CA	