

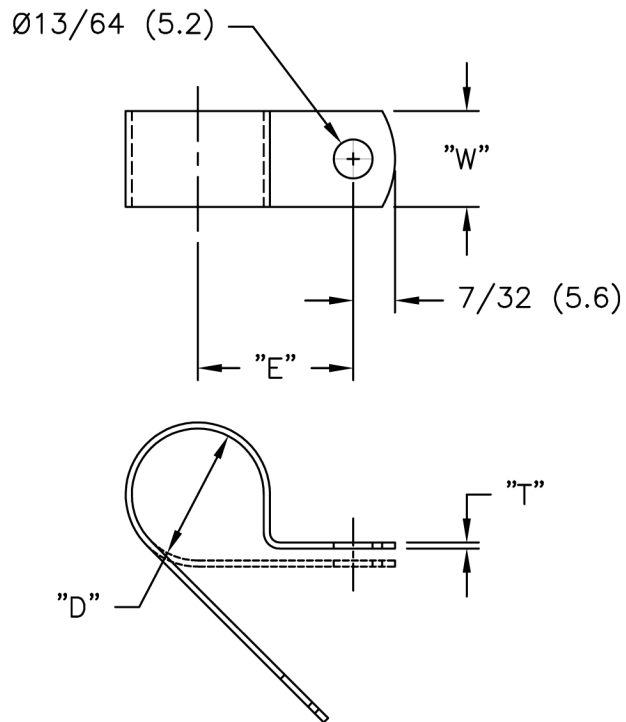
**See "Part Drawing" for Details**



Part Number	Description
-------------	-------------

<a href="#">AL4</a>	Clamp,Screw Mnt,Alum,1/4" Hold
---------------------	--------------------------------





PART NO.	HOLDING DIA. "D"	"E" REF.	"T"	"W"
AL2	1/8 (3.2)	.46 (11.7)	1/32 (0.8)	3/8 (9.5)
AL3	3/16 (4.8)	.50 (12.7)		
AL4	1/4 (6.4)	.53 (13.5)		
AL5	5/16 (7.9)	.56 (14.2)		
AL6	3/8 (9.5)	.59 (15.0)		
AL7	7/16 (11.1)	.62 (15.7)		
AL8	1/2 (12.7)	.65 (16.5)		
AL9	9/16 (14.3)	.75 (19.1)		
AL10	5/8 (15.9)	.78 (19.8)		
AL11	11/16 (17.5)	.81 (20.6)		
AL12	3/4 (19.1)	.84 (21.3)		
AL14	7/8 (22.2)	.90 (22.9)		
AL15	15/16 (23.8)	.93 (23.6)		
AL16	1 (25.4)	.96 (24.4)		
AL18	1-1/8 (28.6)	1.05 (26.7)		
AL20	1-1/4 (31.8)	1.11 (28.2)		

NOTES:  
 1. MAT'L: ALUMINUM ALLOY 5052 H-32 (RMS-199)

TITLE: CABLE CLAMPS, ALUMINUM		DWG IN IN (MM)		FINAL.	
TOLERANCES UNLESS NOTED .XX=±.010 .XXX=±.005 FRAC=±1/64 ANG=±1°		FILE # AL	DWN: P.B.	APP:	PART #
MAT'L: SEE NOTES		DT: 01-18-95	DT:	RE: RICHCO, INC.	AL SERIES
RE: RICHCO, INC.		RICHCO INC.		PRINT TYPE CA	

C	SEE ECN #927 FOR CHANGES	SK 01.31.05
B	DRAWING UPDATED AND CHANGED FILE NO.	SM 09.26.01
A	CONVERTED TO ACAD	PB 01.18.95
REV	DESCRIPTION	ENGR DATE