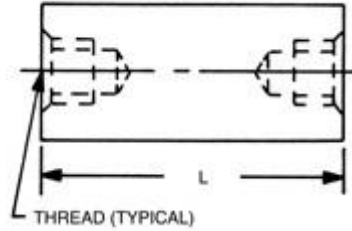
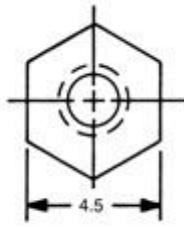
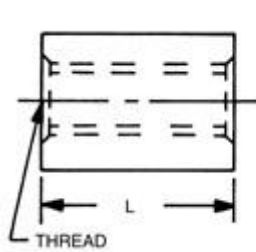


# 4.5mm HEX FEMALE STANDOFFS

RAF



RAF

Order Code:  (code is blank)

Finishes:

select a finish

[\[How to create part numbers\]](#)

[\[Material Specifications\]](#)

SELECT	PART NO.	LENGTH
<input type="radio"/>	M1250	3
<input type="radio"/>	M1251	4
<input type="radio"/>	M1252	5
<input type="radio"/>	M1253	6
<input type="radio"/>	M1254	7
<input type="radio"/>	M1255	8
<input type="radio"/>	M1256	9
<input type="radio"/>	M1257	10
<input type="radio"/>	M1258	11
<input type="radio"/>	M1259	12
<input type="radio"/>	M1260	13
<input type="radio"/>	M1261	14
<input type="radio"/>	M1262	15
<input type="radio"/>	M1263	16
<input type="radio"/>	M1264	17
<input type="radio"/>	M1265	18

SELECT	PART NO.	LENGTH
<input type="radio"/>	M1266	19
<input type="radio"/>	M1267	20
<input type="radio"/>	M1268	21
<input type="radio"/>	M1269	22
<input type="radio"/>	M1270	23
<input type="radio"/>	M1271	24
<input type="radio"/>	M1272	25
<input type="radio"/>	M1273	28
<input type="radio"/>	M1274	31
<input type="radio"/>	M1275	34
<input type="radio"/>	M1276	37
<input type="radio"/>	M1277	40
<input type="radio"/>	M1278	43
<input type="radio"/>	M1279	46
<input type="radio"/>	M1280	49
<input type="radio"/>	M1281	52

Select	CODE	THREAD
<input type="radio"/>	2545	M2.5x0.45
<input type="radio"/>	3005	M3x0.5

Select	CODE	MATERIAL	RoHS
<input type="radio"/>	A	ALUMINUM	NO
<input type="radio"/>	B	BRASS	YES
<input type="radio"/>	SS	STAINLESS STEEL	YES
<input type="radio"/>	S	STEEL	YES
<input type="radio"/>	N	NYLON	YES

Ordering Code			
mxxxx	xxxx	xx	xx
	Thread		Finish
Length		Material	

For non standard items please click here

For thread depth information please click here

