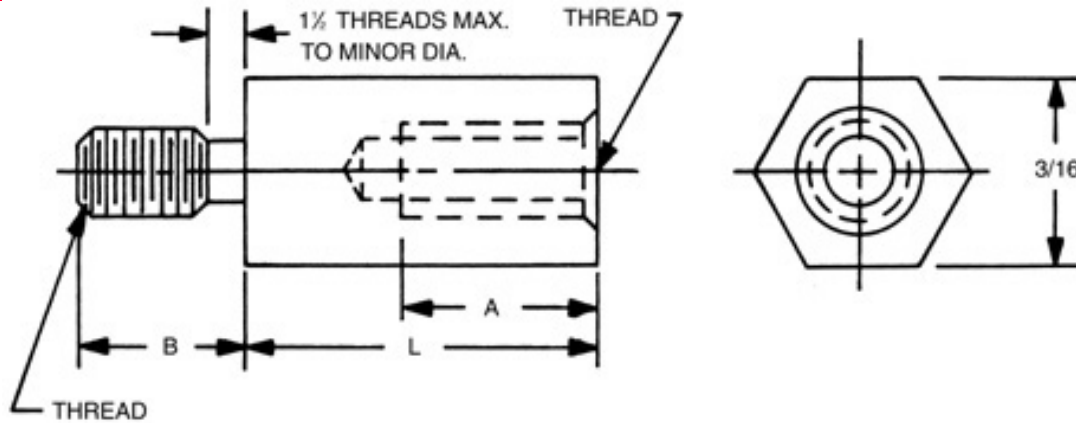


# 3/16 HEX MALE-FEMALE STANDOFFS



Order Code:



Contents

Finishes:

Quote
[\[How to create part numbers\]](#)
[\[Material Specifications\]](#)

SELECT	PART NO.	LENGTH
<input type="checkbox"/>	4500A	5/32
<input type="checkbox"/>	4500	3/16
<input type="checkbox"/>	4500T	7/32
<input type="checkbox"/>	4501	1/4
<input type="checkbox"/>	4501T	9/32
<input type="checkbox"/>	4502	5/16
<input type="checkbox"/>	4502T	11/32
<input type="checkbox"/>	4503	3/8
<input type="checkbox"/>	4503T	13/32
<input type="checkbox"/>	4504	7/16
<input type="checkbox"/>	4504T	15/32
<input type="checkbox"/>	4505	1/2
<input type="checkbox"/>	4505T	17/32
<input type="checkbox"/>	4506	9/16
<input type="checkbox"/>	4506T	19/32
<input type="checkbox"/>	4507	5/8
<input type="checkbox"/>	4507T	21/32
<input type="checkbox"/>	4508	11/16
<input type="checkbox"/>	4508T	23/32

SELECT	PART NO.	LENGTH
<input type="checkbox"/>	4509	3/4
<input type="checkbox"/>	4509T	25/32
<input type="checkbox"/>	4510	13/16
<input type="checkbox"/>	4510T	27/32
<input type="checkbox"/>	4511	7/8
<input type="checkbox"/>	4511T	29/32
<input type="checkbox"/>	4512	15/16
<input type="checkbox"/>	4512T	31/32
<input type="checkbox"/>	4513	1
<input type="checkbox"/>	4514	1-1/16

SELECT	PART NO.	LENGTH
<input type="checkbox"/>	4515	1-1/8
<input type="checkbox"/>	4516	1-3/16
<input type="checkbox"/>	4517	1-1/4
<input type="checkbox"/>	4518	1-5/16
<input type="checkbox"/>	4519	1-3/8
<input type="checkbox"/>	4520	1-7/16
<input type="checkbox"/>	4521	1-1/2
<input type="checkbox"/>	4522	1-9/16
<input type="checkbox"/>	4523	1-5/8
<input type="checkbox"/>	4524	1-11/16
<input type="checkbox"/>	4525	1-3/4
<input type="checkbox"/>	4526	1-13/16
<input type="checkbox"/>	4527	1-7/8
<input type="checkbox"/>	4528	1-15/16
<input type="checkbox"/>	4529	2"

Select	CODE	THREAD
<input type="checkbox"/>	256	2-56
<input type="checkbox"/>	440	4-40
<input type="checkbox"/>	632	6-32

THREAD LENGTH CODE		
THREAD	A	B
2-56	3/16	5/32
4-40	1/4	3/16
6-32	3/8	1/4

In short lengths, "A" will be tapped to maximum depth

Select	CODE	MATERIAL	RoHS
<input type="checkbox"/>	A	ALUMINUM	NO
<input type="checkbox"/>	B	BRASS	YES
<input type="checkbox"/>	SS	STAINLESS STEEL	YES
<input type="checkbox"/>	S	STEEL	YES
<input type="checkbox"/>	N	NYLON	YES

Ordering Code			
xxxx	xxx	x	x
	Thread		Finish
Length		Material	

For non standard items please click [here](#)



© 1999 RAF Electronic Hardware All Rights Reserved

Seymour CT 06483 203 888-2133 Fax: 203 888-9860 [www.rafhdwe.com](http://www.rafhdwe.com)