



**THE THREE ARM**

**PHENOLIC**

more three arm knobs >>

*Material- Phenolic*  
*Insert- Brass*  
*Projecting Stud- Steel, zinc plated*

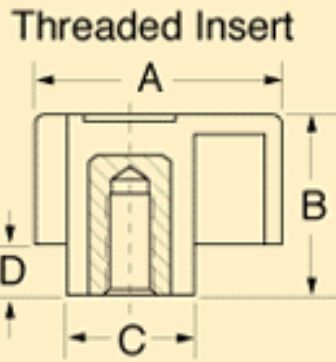


**Threaded Insert**

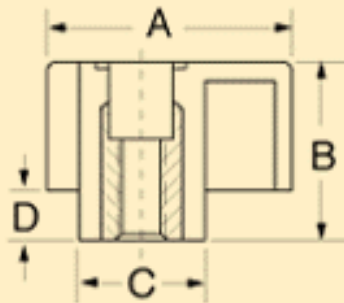
Part No.	Insert	
	Thread	Depth
3035AU	5/16-18	1/2
3035AX	1/4-20	3/8
3035AY	10-32	3/8

**Threaded Insert Thru Hole**

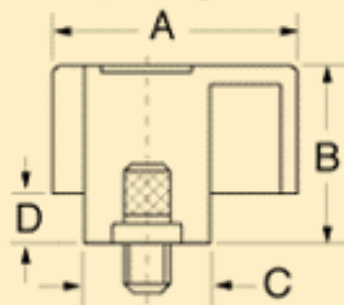
Part No.	Insert	
	Thread	Depth
3035JD <sup>3</sup>	1/4-20	3/8
3035JE <sup>3</sup>	5/16-18	1/2
<b>3 "B" = 3/4, "D" = 1/8</b>		



**Threaded Insert Thru Hole**



**Projecting Stud**



**Projecting Stud**

Part No.	Stud		Max Length
	Thread	Length	
3035AQ <sup>2</sup>	5/16-18	3/4	4-1/2
3035AS	1/4-20	9/16	4-1/2
3035AW	1/4-20	3/4	4-1/2
3035BG	5/16-18	3/4	4-1/2
<b>1"B"=5/8, "D"=1/8</b> <b>2"B"=1-1/4, "D"=5/8</b>			

[← back](#)