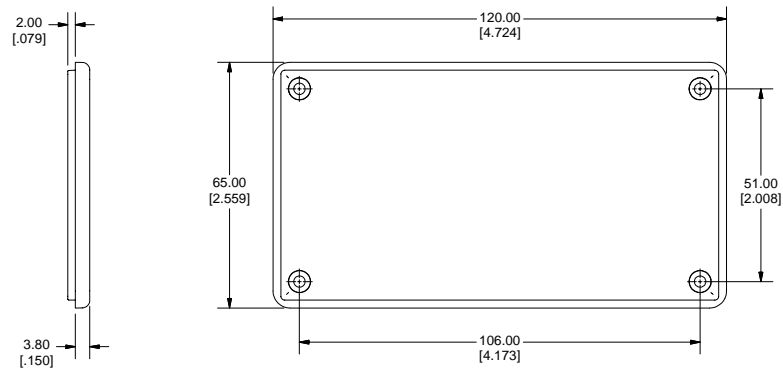
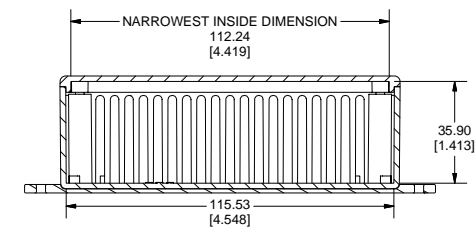
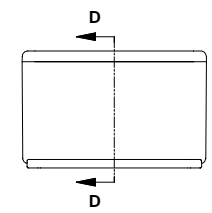
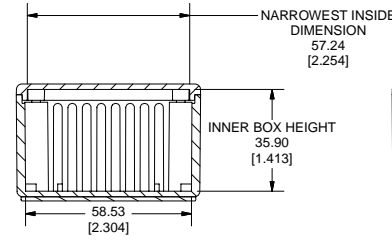
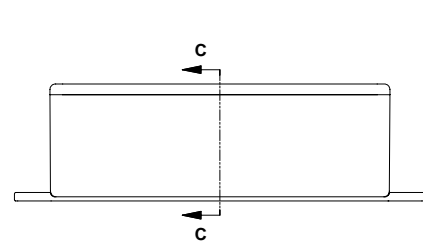
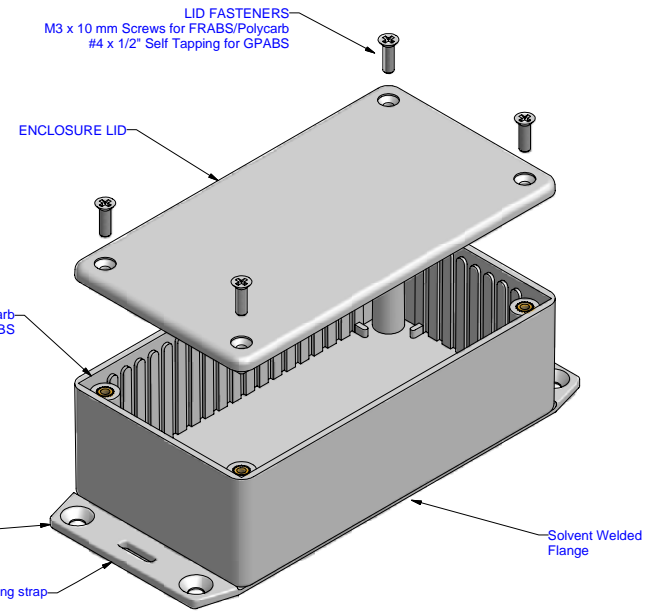
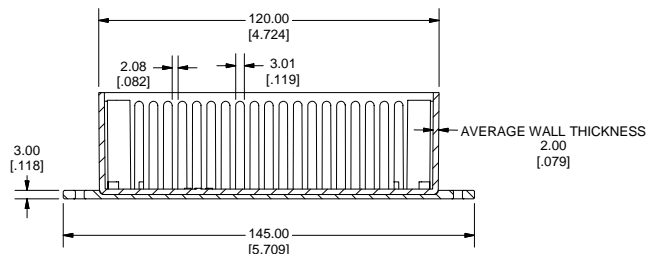
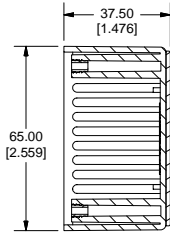
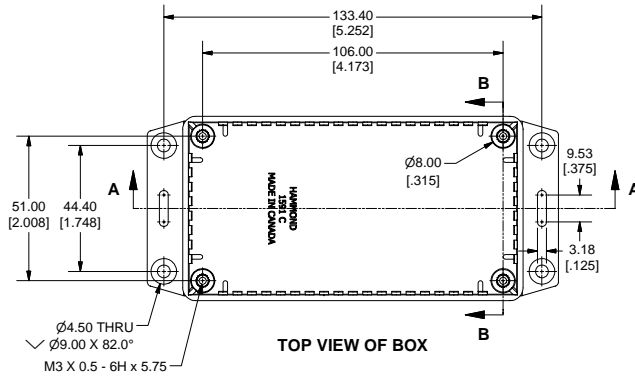
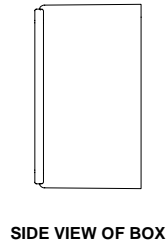


1591CF ENCLOSURE



Note:
 Enclosures can be Factory Modified (Milling, Drilling, Printing etc.)
 Solid models of this enclosure available in STEP or IGES Format.
 Contact Factory mjm@hammondmfg.com



PART NUMBERS		
1591C Flanged Box Enclosures		
Material	Colour	Part Number
FR ABS	Black	1591CF2BK
UL94 - V0	Grey	1591CF2GY
GP ABS	Black	1591CF2SBK
	Grey	1591CF2SGY
Accessories		
Description		Part Number
Universal Use	PC Board Card Adapters	See Accessories Section
	Clear Lids - clear, flame retardant polycarbonate - Lid ONLY	1591CC
FR ABS	Replacement Screws, Flat Head Phillips Nickel Plated Pkg of 100	1591MS100
		1591MS100BK (Black)
GP ABS	Self Tapping Pkg of 100	1591TS100
		1591TS100BK (Black)
Recommended Torque on Fasteners (no lubrication)		
M3 - 0.5 x 10mm Screws		30-40 cN'm
#4 x 0.5 Screws		30-40 cN'm