

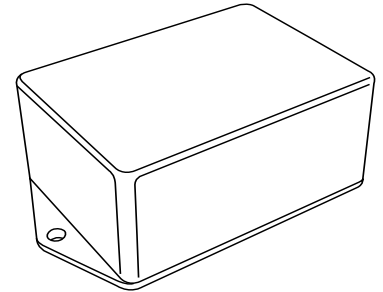


**Order On Line**  
[www.polycase.com](http://www.polycase.com)  
[sales@polycase.com](mailto:sales@polycase.com)  
**800-248-1233**  
**Fax: 440-934-0088**

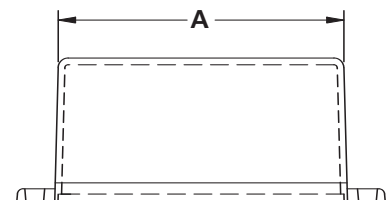
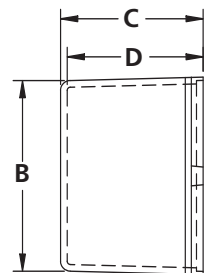
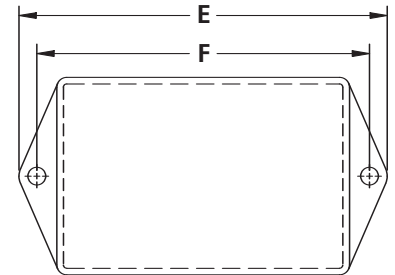
## PLASTIC ENCLOSURES FOR ELECTRONICS

# TX Product Features

Material	Design	Additional Info
<ul style="list-style-type: none"> <li><b>Material:</b> Flame retardant ABS plastic</li> <li><b>Flame Rating:</b> UL94V-0 (3420TX rated UL94-5VA)</li> <li><b>Optional nylon or Noryl® material:</b> Available for high heat applications. Ask your Customer Service Representative for details and availability.</li> <li><b>Surface:</b> Textured finish</li> </ul>	<ul style="list-style-type: none"> <li><b>Mounting Flanges:</b> Available with or without mounting flanges</li> <li><b>Closure:</b> Bonded to an internal ledge</li> <li><b>Cover:</b> Optional flush mounted cover has a smooth surface</li> </ul>	<ul style="list-style-type: none"> <li><b>Colors:</b> Black, bone or gray</li> <li><b>Note:</b> For screw-on covers and PC board mounting bosses, see TX Select Series, pages 20-21</li> </ul>



Catalog Number	Length A	Width B	Height C	Inside Depth w/o Cover D	Mtg. Flange Length E	Mtg. Flange Holes F	Catalog Cover Number
P-1175TX	1.000	1.000	0.780	0.710			C-0101-N
TF-1175TX	1.000	1.000	0.780	0.710	1.750	1.375	C-0101-N
P-1218TX	1.500	1.250	0.800	0.730			C-1201-N
TF-1218TX	1.500	1.250	0.800	0.730	2.375	2.000	C-1201-N
P-1304TX	2.080	1.280	0.450	0.370			C-1302-N
TF-1304TX	2.080	1.280	0.450	0.370	2.875	2.438	C-1302-N
P-1521TX	2.000	1.500	1.000	0.925			C-1502-N
TF-1521TX	2.000	1.500	1.000	0.925	2.875	2.500	C-1502-N
P-1741TX	4.000	1.750	1.000	0.930			C-1704-N
TF-1741TX	4.000	1.750	1.000	0.930	4.875	4.500	C-1704-N
P-2215TX	2.000	2.000	1.500	1.425			C-0202-N
TF-2215TX	2.000	2.000	1.500	1.425	2.870	2.500	C-0202-N
P-2309TX	3.000	2.000	0.900	0.825			C-0203-N
TF-2309TX	3.000	2.000	0.900	0.825	3.860	3.500	C-0203-N
P-2315TX	3.000	2.000	1.500	1.425			C-0203-N
TF-2315TX	3.000	2.000	1.500	1.425	3.875	3.500	C-0203-N
P-2409TX	4.000	2.125	0.900	0.830			C-0204-N
TF-2409TX	4.000	2.125	0.900	0.830	4.875	4.500	C-0204-N
P-2420TX	4.000	2.125	2.000	1.930			C-0204-N
TF-2420TX	4.000	2.125	2.000	1.930	4.875	4.500	C-0204-N
P-3315TX	3.000	3.000	1.500	1.425			C-0303-N
TF-3315TX	3.000	3.000	1.500	1.425	3.875	3.500	C-0303-N
P-3420TX	4.375	3.125	2.000	1.900			C-0304-N
TF-3420TX	4.375	3.125	2.000	1.900	5.500	5.000 X 1.750	C-0304-N



Dimensions are nominal and in inches

**Enclosure includes case only. Cover ordered separately.**

**WHEN ORDERING, PLEASE SPECIFY:**

- Catalog Number** – With or without mounting flanges
- Cover Number & Cover Color** – Black, Bone or Gray
- Color** – Black, Bone or Gray