

PATLITE

■ HSST / 50mm



Manually operated 3-color LED tower kit operates from AC120V; with pushbutton control box and hardware for several mounting configurations. Ideal for call-centers, office communications and similar applications.

SIZE: 50mm diameter (tower)

INPUT VOLTAGE AC120V

OPTIONS:

FUNCTIONS Continuous only

AVAILABLE:

MOUNTING OPTIONS: - Bracket clamp
- Wall mount
- Cubicle edge mount

BODY STYLE: Kit includes:
- 3-LED signal tower with 4 foot cable
- 120VAC power supply with 6 foot cord length
- 3 pushbutton style switch box with mounting screws
- 2 position mounting bracket with 2 adjustment screws
- 3 and 12-inch mounting poles

BODY COLOR: Beige

TIERS: Available only with 3-tier tower

MODULE COLORS: - Light color: Red / Amber / Green
- Lens color: Clear or white; shows color when activated

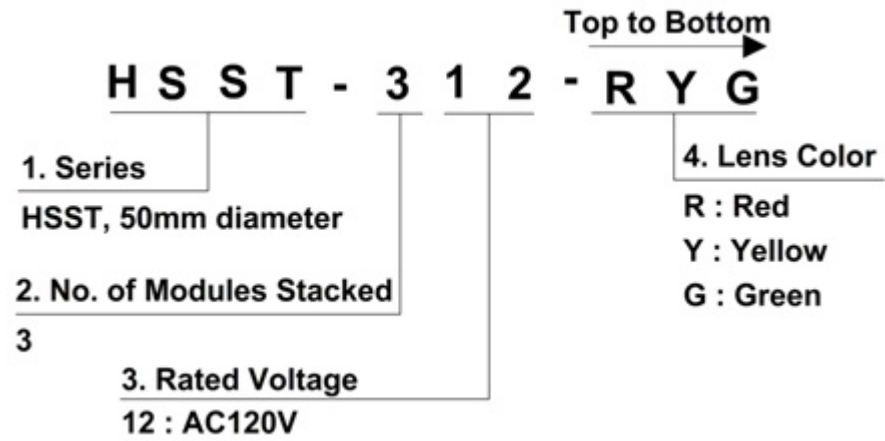
ALARMS (FB STYLE ONLY): Not available

RATINGS: Power supply is UL Listed

PROTECTION: Not rated

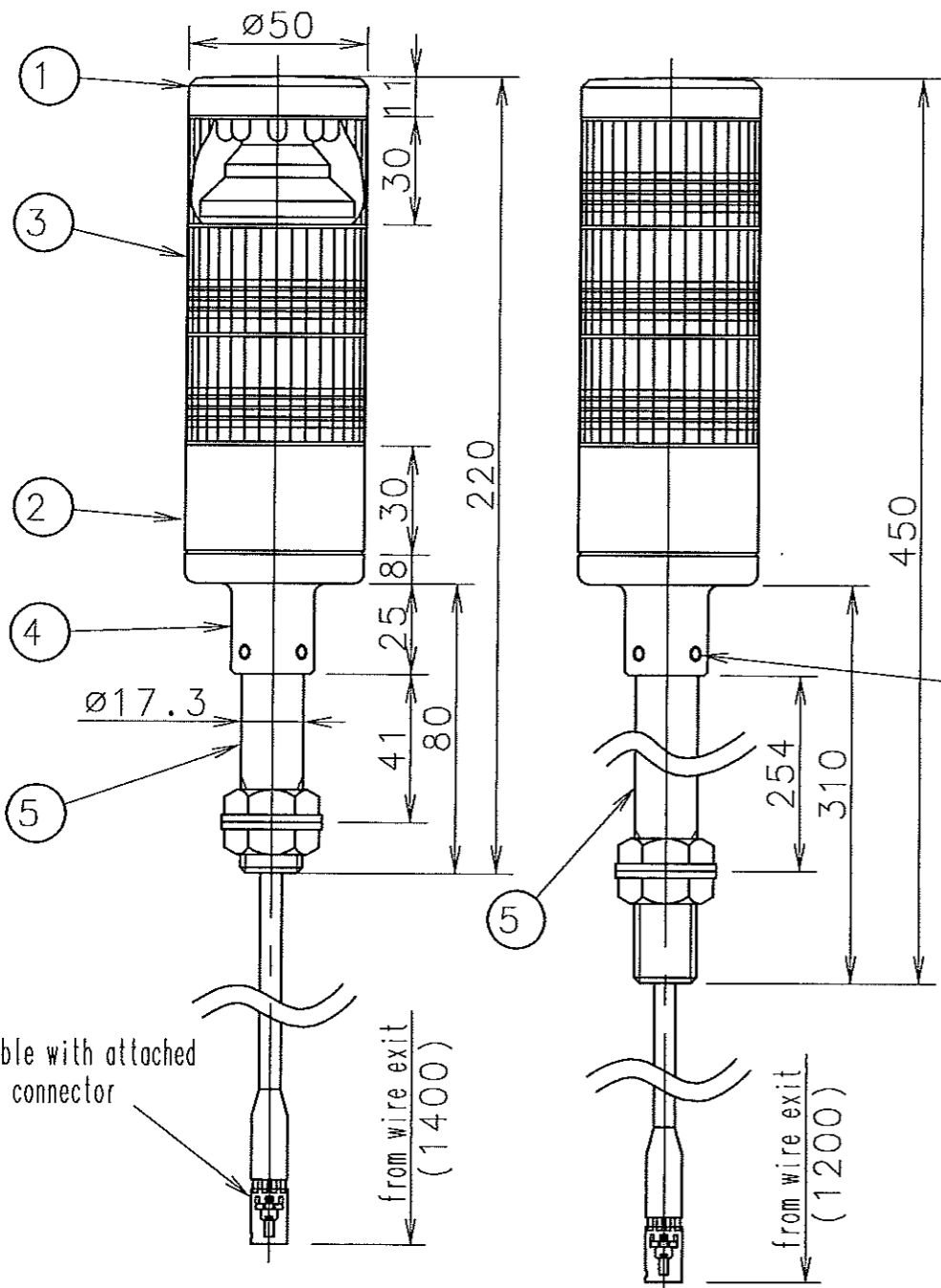
CONTROL OPTIONS: - Detented pushbutton: press once to turn on, press again to turn off
- One pushbutton per color

PART NUMBER GUIDE

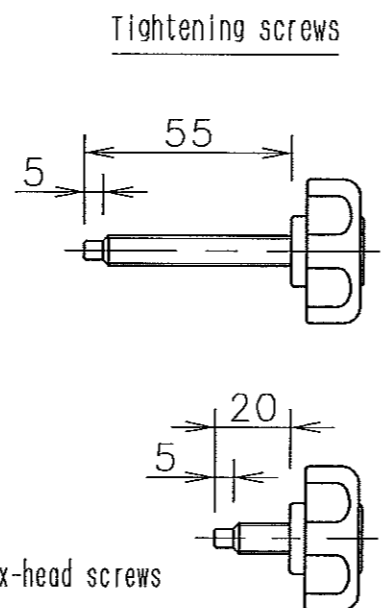


Indicator light **Short pole**

Long pole

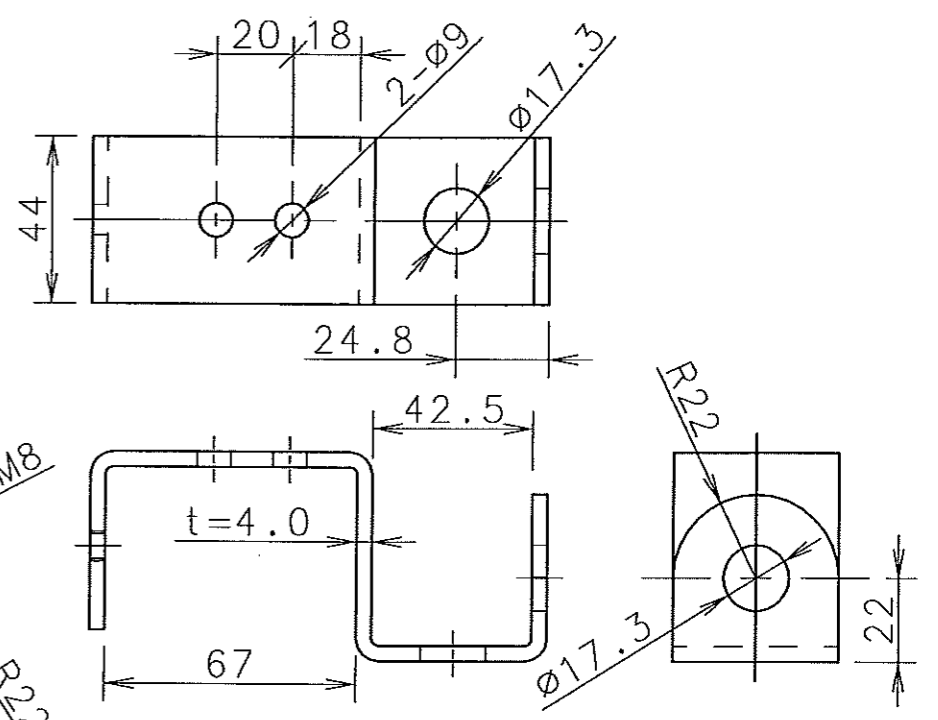


WEIGHT
g

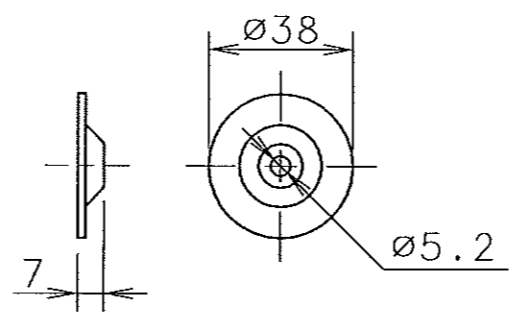


指定外公差	短辺	長辺	精	中	粗	角度公差±[°]	寸法公差±[mm]	符号	年月日	訂正	履歴	配印	検出
	10	50	100			—	6 30 120 300 1000	△					
	1	0.50	0.30	0.1			0.05 0.1 0.2 0.4 0.6	△					
	3	1.5	1	0.5			0.1 0.3 0.5 0.7 1	△					
							0.3 0.5 1 1.2 2	△					

Bracket



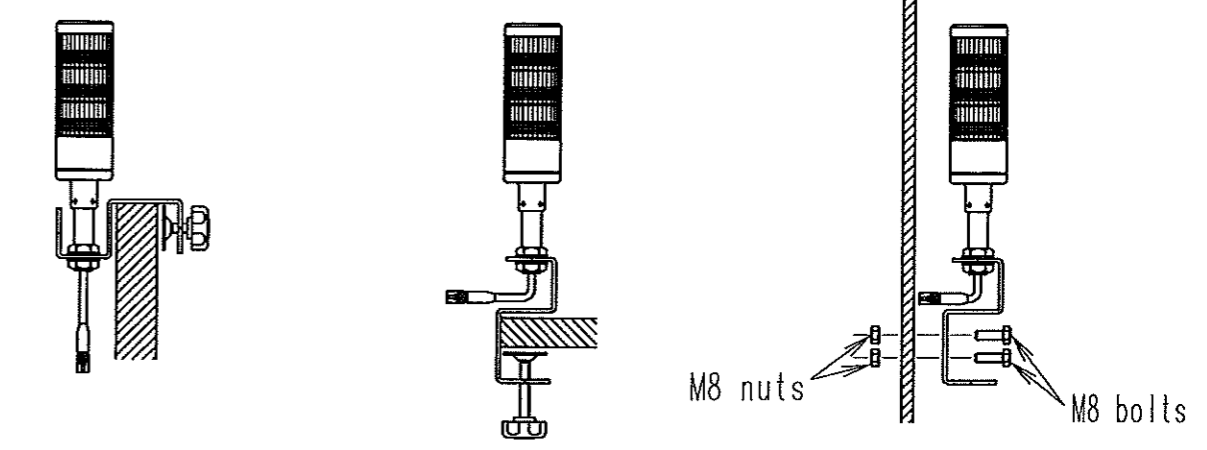
Fitting plate



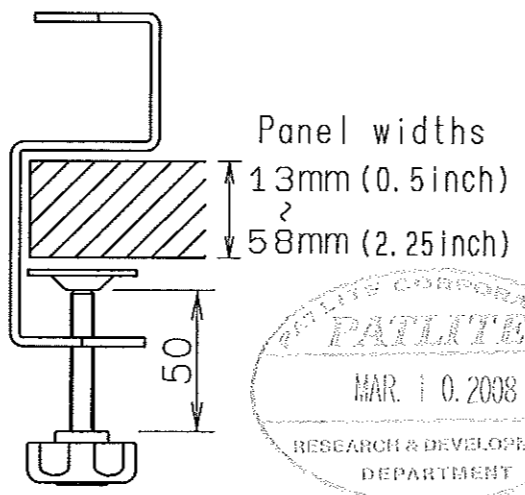
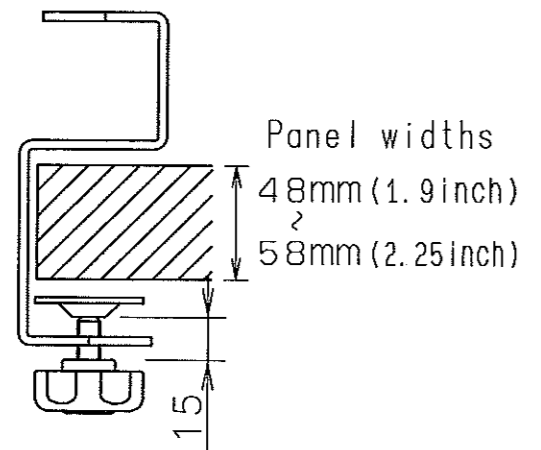
When installing the unit in a partition or the like:

When installing the unit into a table or the like:

For wall mounting



Panel widths

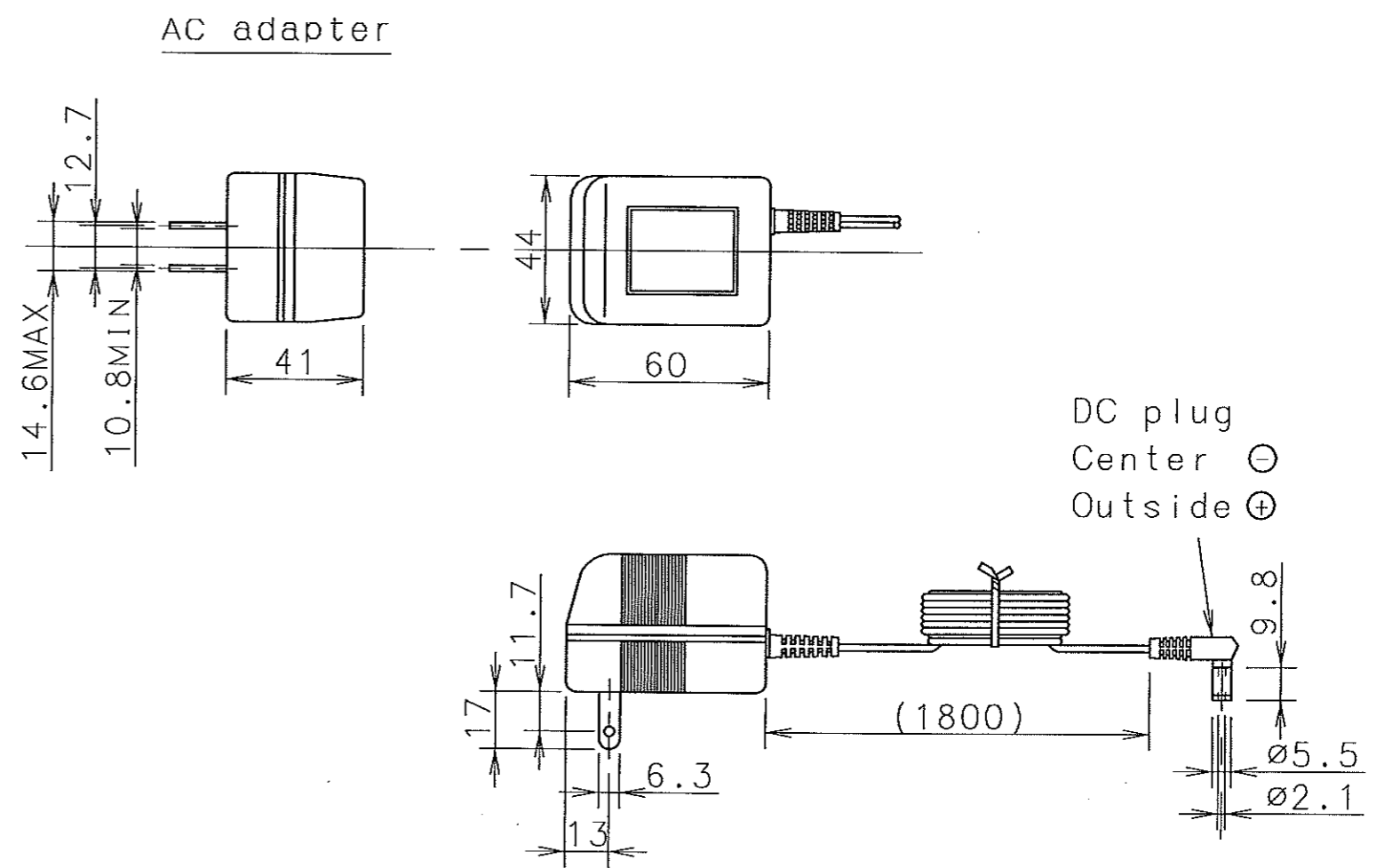
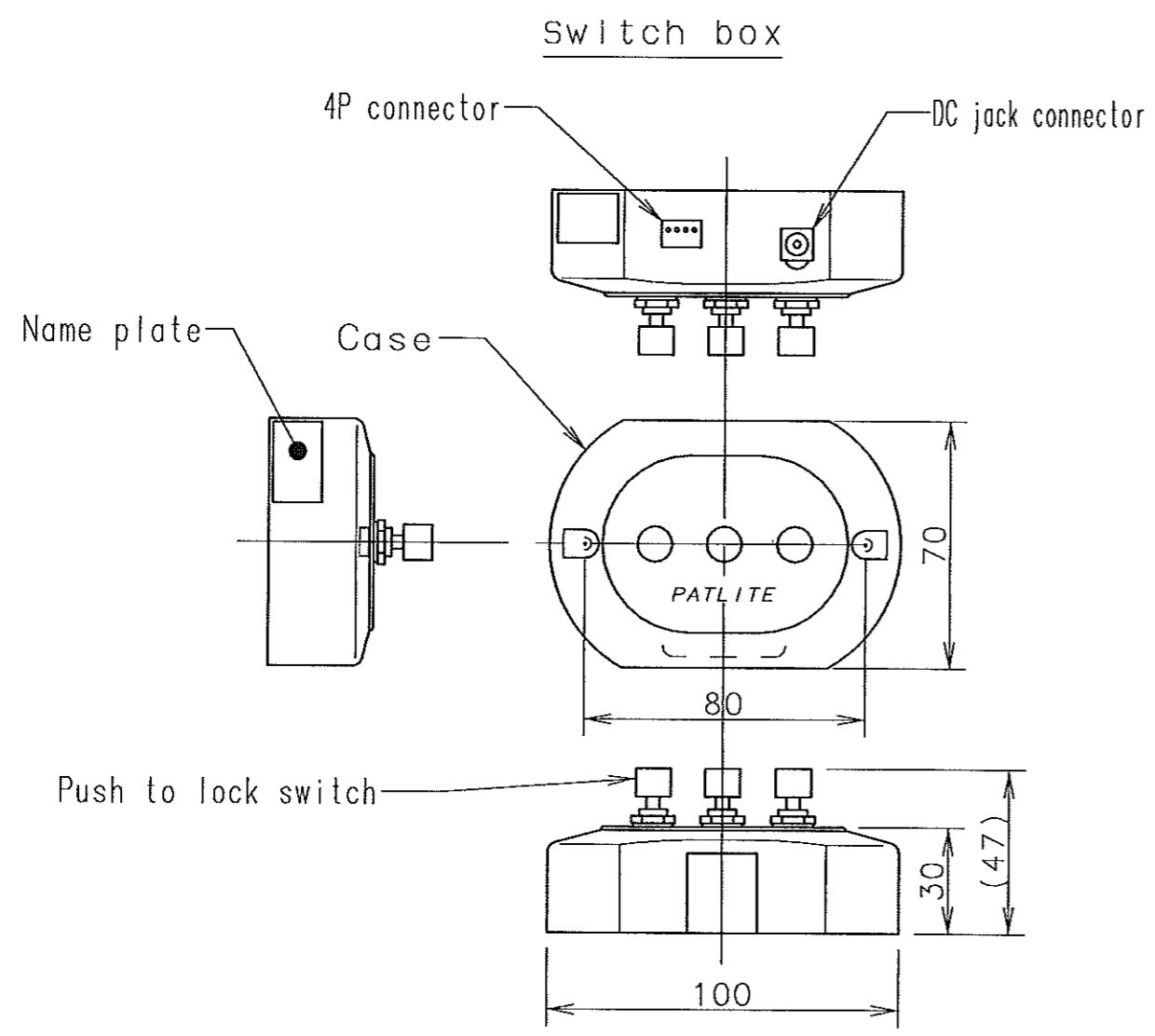


配布先	
三田製造	1
八尾製造	1
製技	1
購買	1
三田品管	1
八尾品管	1
技術	1
合計	5

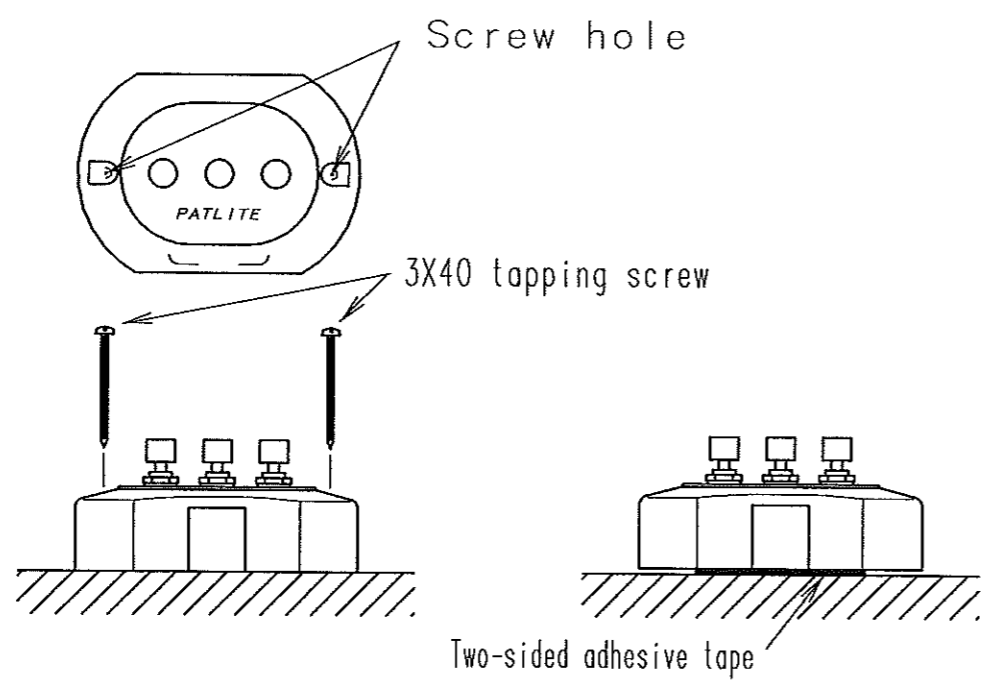
5	Pole		2	SGP	MFNi-Cr
4	Pole bracket		1	ADC12	
3	LED unit		3	LED:red,yellow,green	Lens:clear
2	Body		1	ABS	Light gray
1	Head cover		1	ABS	Light gray
番号	部品名	部品番号	数量	材料&寸法	処理
NO.	PART NAME	PART NO.	QTY.	MATERIAL & SIZE	FINISH
設計	製図	検図	承認	図名	MODEL
DGN.BY	DRN.BY	CHK.BY	APP.BY	図名 NAME	HSST-312
M.Komagawa	M.Komagawa	T.Kawashima	T.Mekochi	部品コード	PART NO.
25. DEC. '98	16. APR. '99	21. APR. '99	21. APR. '99	SPECIFICATIONS	
三角法	単位 UNIT	尺度 SCALE	株式会社 パトライト		図番 DRAWING NO.
3rd ANGLE P.	mm	1:2	PATLITE Corporation		HSST-312-A00B-2/3

指定	角度公差±[°]	寸法公差±[mm]	符号	年月日	訂正	原	配印	後印
短辺	~ ~ 100	6 30 120 300 1000	△	SYM. DATE	訂正	原	配印	後印
長辺	10 50 100	精 0.05 0.1 0.2 0.4 0.6	△					
精	1 0.5 0.3 0.1	中 0.1 0.3 0.5 0.7 1	△					
粗	3 1.5 1 0.5	粗 0.3 0.5 1 1.2 2	△					

WEIGHT
g



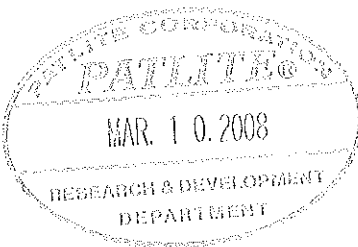
How to install the switch box



配布先	
三田製造	1
八尾製造	
製技	1
購買	1
三田品管	1
八尾品管	1
技術	
合計	5

番号 NO.	部品名 PART NAME	部品番号 PART NO.	数量 QTY.	材料&寸法 MATERIAL & SIZE	処理 FINISH	記号 REMARKS
設計 DGN.BY	製図 DRN.BY	検図 CHK.BY	承認 APP.BY	図名 NAME	機名 MODEL	特注No. S. P. No.
M.Komagawa	M.Komagawa	T.Kawashima	T.Mekochi		HSST-312	
25. DEC. '98 16. APR. '99 21. APR. '99 21. APR. '99				SPECIFICATIONS		部品コード PART NO.
三角法 3rd ANGLE P.	単位 UNIT mm	尺度 SCALE 1:2	株式会社 パトライト PATLITE Corporation		図番 DRAWING NO. HSST-312-A00B-3/3	

S P E C I F I C A T I O N S

MODEL	HSST-312			
RATED VOLTAGE	120V AC			
OPERATING VOLTAGE	108~132V DC			
POWER CONSUMPTION	3W (When all 3 lights are on)			
OPERATING TEMP RANGE	-15°C ~ +60°C			
MOUNTING DIRECTION	INDOOR: UPRIGHT ONLY			
INSULATION PROOF	To be measured by an insulation measuring device of 500VDC between the terminals and the chassis. MORE THAN 1MΩ (≥1MΩ)			
VOLTAGE PROOF	Being applied between the terminals and the chassis for 1 minute. 1000V AC 1 MINUTE			
EXTERNAL DIMENSIONS	SEE DRAWIN No. HSST-312-A00B-2/3, 3/3			
MASS	ABOUT 1.2kg			
DRAWING No. : HSST-312-A00B-1/3				
				
PATLITE Corporation		APP. BY	CHK. BY	DRN. BY
		T. Mekochi	T. Kawashima	M. Komagawa
		21. APR. '99	21. APR. '99	16. APR. '99