



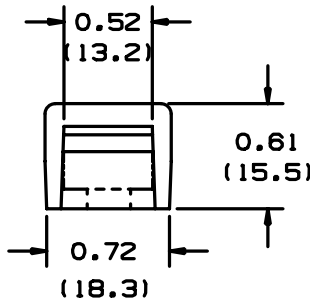
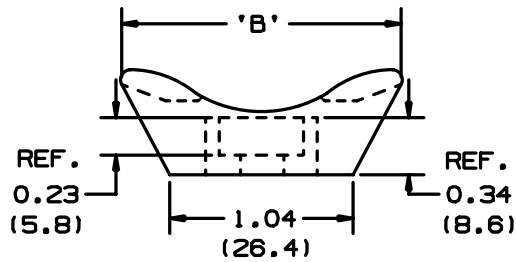
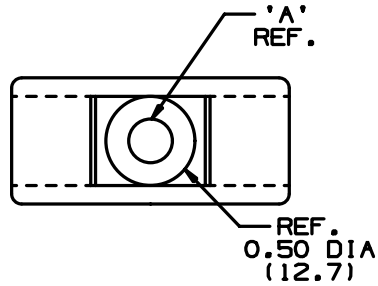
TMEH-S8-Q0



- Mounts designed specially for use with *PANDUIT* Extra-Heavy cross section ties for mounting cable, large wire bundles or tubular shapes.
- • Unique cradle design provides maximum stability for cable bundle
- • Route and support large diameter and heavy cable bundles
- ‡ Cable Tie Cross Section Sizes: M = Miniature, I = Intermediate, S = Standard, HS = Heavy-Standard, LH = Light-Heavy, H = Heavy, HLM = Miniature *Tak-Ty*® Hook & Loop Cable Ties.

■ Part Number	TMEH-S8-Q0
■ RoHS Compliancy Status	Compliant
■ Part Description	Extra Heavy Cable Tie Mount
■ Material	Weather Resistant Nylon 6.6
■ Color	Black
■ UL Recognized	E136577
■ Height (In.)	.61
■ Height (mm)	15.5
■ Length (In.)	1.62
■ Length (mm)	42.0
■ Width (In.)	.72
■ Width (mm)	19.0
■ Environment	Outdoors
■ Flammability Rating	UL94 V-2
■ Hole Diameter (In.)	.18
■ Hole Diameter (mm)	4.3
■ Max. Bundle Diameter (mm)	12.7
■ Mounting Method	#8 (M4) Screw
■ Pricing Description	Cable Tie Mount, Extra-Heavy, #8 Screw (M4), Weather Resistant Nylon
■ Screw Size	#8 (M4)
■ Screw Size Metric	M4
■ Used With Cable Ties	I, S, H, EH
■ Min. Order UOM	PC
■ Min. Order Qty.	25
■ BOM Qty. (# of Pkgs.)	

THIS COPY IS PROVIDED ON A RESTRICTED BASIS AND IS NOT TO BE USED IN ANY WAY DETRIMENTAL TO THE INTERESTS OF PANDUIT CORP.



PANDUIT PART NUMBER*	*MATERIAL SUFFIX	'A' DIA.	'B'	MTG. SCREW	WEIGHT lbs/100 pcs (g)/100 pcs	USE WITH ANY OF THESE CABLE TIES
TMEH-S8	-0	0.18 (4.8)	1.62 (41.1)	#8 (M4)	1.04 (471.4)	I,S,H,EH
TMEH-S10	-0	0.20 (5.1)	1.65 (41.9)	#10 (M5)	1.03 (467.4)	I,S,H,EH
	-100 -109					
TMEH-S25	-0	0.26 (6.8)	1.62 (41.1)	1/4" (M6)	1.01 (458.0)	I,S,H,EH

*MATERIAL SUFFIX	MATERIAL
-0	WEATHER RESISTANT NYLON
-100	WEATHER RESISTANT POLYPROPYLENE
-109	POLYPROPYLENE

NOTES:

- SEE CURRENT PRICE SHEET FOR PART NUMBER SUFFIX DESIGNATION FOR PACKAGE SIZE.
- CABLE TIE CROSS SECTION CODE:
I=INTERMEDIATE,S=STANDARD
H=HEAVY DUTY,EH=EXTRA HEAVY.

DIMENSIONS IN BRACKETS ARE METRIC [mm]

CAD FILENAME/LAYERS G00239EL_PB_TMEH_02

PANDUIT

CORP. TINLEY PARK, ILLINOIS

TMEH-XX
TIE MOUNT

REV	DATE	BY	CHK	DESCRIPTION	ECN	R	CUST	SUP	DRWN BY	DATE	MAT'L	SCALE	DWG NO.	DWG SIZE
2	10/28/03	MSAD		ADDED SEPERATE TMEH-S10 ROW FOR -100 AND -109 PARTS, 0.50 (12.7) DIA WAS .52 (13.2), 'B' WAS 1.65 (41.9) FOR -0 PARTS, 0.72 (18.3) WAS .74 (18.8) 1.04 (26.4) WAS 1.05 (26.7)	G80239EL	2								
1	7/24/01	LGG		ADDED REF & UPDATED	G80239EL	1								
R	12/13/98	AJV		INITIAL RELEASE	G80239EL	R				12/13/98	SEE TABLE			
													G80239EL	A

UNLESS OTHERWISE SPECIFIED,
DIMENSIONAL TOLERANCES ARE:
(.X) ±0.05 (1.3) (.XXX) ±0.010 (0.25)
(.XX) ±0.02 (0.5) ANGLES ± 5°

UNLESS OTHERWISE SPECIFIED,
ALL DIMENSIONS ARE GIVEN
IN INCHES, THIRD ANGLE PROJECTION.

DRWN BY AJV

MAT'L:

SCALE NONE

DATE 12/13/98

DRAWING NO.

SEE TABLE

G80239EL

DWG

A
SIZE

CHK'D