

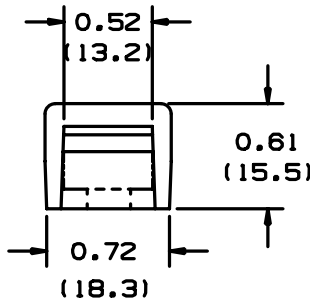
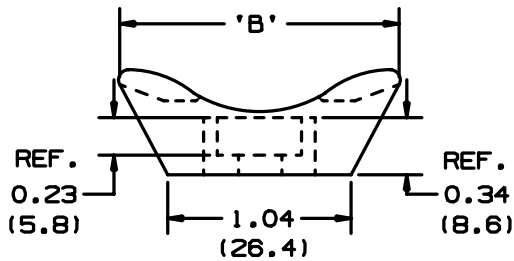
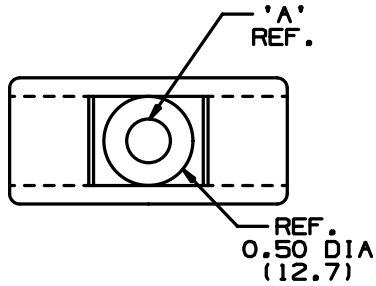
TMEH-S10-Q0



- Mounts designed specially for use with *PANDUIT* Extra-Heavy cross section ties for mounting cable, large wire bundles or tubular shapes.
- Unique cradle design provides maximum stability for cable bundle
- Route and support large diameter and heavy cable bundles
- ‡ Cable Tie Cross Section Sizes: M = Miniature, I = Intermediate, S = Standard, HS = Heavy-Standard, LH = Light-Heavy, H = Heavy, HLM = Miniature *Tak-Ty*® Hook & Loop Cable Ties.

■ Part Number	TMEH-S10-Q0
■ RoHS Compliancy Status	Compliant
■ Part Description	Extra Heavy Cable Tie Mount
■ Material	Weather Resistant Nylon 6.6
■ Color	Black
■ UL Recognized	E136577
■ Height (In.)	.61
■ Height (mm)	15.5
■ Length (In.)	1.65
■ Length (mm)	42.0
■ Width (In.)	.74
■ Width (mm)	19.0
■ Environment	Outdoors
■ Flammability Rating	UL94 V-2
■ Hole Diameter (In.)	.20
■ Hole Diameter (mm)	5.1
■ Max. Bundle Diameter (mm)	12.7
■ Mounting Method	#10 (M5) Screw
■ Pricing Description	Cable Tie Mount, Extra-Heavy, #10 Screw (M5), Weather Resistant Nylon
■ Screw Size	#10 (M5)
■ Screw Size Metric	M5
■ Used With Cable Ties	I, S, H, EH
■ Min. Order UOM	PC
■ Min. Order Qty.	25
■ BOM Qty. (# of Pkgs.)	

THIS COPY IS PROVIDED ON A RESTRICTED BASIS AND IS NOT TO BE USED IN ANY WAY DETRIMENTAL TO THE INTERESTS OF PANDUIT CORP.



PANDUIT PART NUMBER*	*MATERIAL SUFFIX	'A' DIA.	'B'	MTG. SCREW	WEIGHT lbs/100 pcs (g)/100 pcs	USE WITH ANY OF THESE CABLE TIES
TMEH-S8	-0	0.18 (4.8)	1.62 (41.1)	#8 (M4)	1.04 (471.4)	I,S,H,EH
TMEH-S10	-0 -100 -109	0.20 (5.1)		#10 (M5)	1.03 (467.4)	I,S,H,EH
TMEH-S25	-0	0.26 (6.6)	1.62 (41.1)	1/4" (M6)	1.01 (458.0)	I,S,H,EH

*MATERIAL SUFFIX	MATERIAL
-0	WEATHER RESISTANT NYLON
-100	WEATHER RESISTANT POLYPROPYLENE
-109	POLYPROPYLENE

NOTES:

- SEE CURRENT PRICE SHEET FOR PART NUMBER SUFFIX DESIGNATION FOR PACKAGE SIZE.
- CABLE TIE CROSS SECTION CODE:
I=INTERMEDIATE,S=STANDARD
H=HEAVY DUTY,EH=EXTRA HEAVY.

DIMENSIONS IN BRACKETS ARE METRIC [mm]

CAD FILENAME/LAYERS G00239EL_PB_TMEH_02



CORP. TINLEY PARK, ILLINOIS

TMEH-XX
TIE MOUNT

REV	DATE	BY	CHK	DESCRIPTION	ECN	R	CUST	SUP	DRWN BY	DATE	MAT'L	SCALE	DWG NO.	DWG SIZE
2	10/28/03	MSAD		ADDED SEPERATE TMEH-S10 ROW FOR -100 AND -109 PARTS, 0.50 (12.7) DIA WAS .52 (13.2), 'B' WAS 1.65 (41.9) FOR -0 PARTS, 0.72 (18.3) WAS .74 (18.8) 1.04 (26.4) WAS 1.05 (26.7)	G80239EL	2								
1	7/24/01	LGG		ADDED REF & UPDATED	G80239EL	1			AJV			NONE		
R	12/13/98	AJV		INITIAL RELEASE	G80239EL	R				12/13/98	SEE TABLE			
									CHK'D				G80239EL	A

UNLESS OTHERWISE SPECIFIED, DIMENSIONAL TOLERANCES ARE:
(.X) ±0.05 (1.3) (.XXX) ±0.010 (0.25)
(.XX) ±0.02 (0.5) ANGLES ± 5°

UNLESS OTHERWISE SPECIFIED, ALL DIMENSIONS ARE GIVEN IN INCHES, THIRD ANGLE PROJECTION.

SCALE NONE
DRAWING NO. G80239EL
Dwg SIZE A