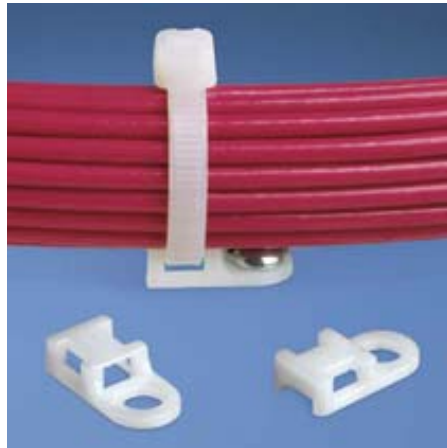




TA1S8-M

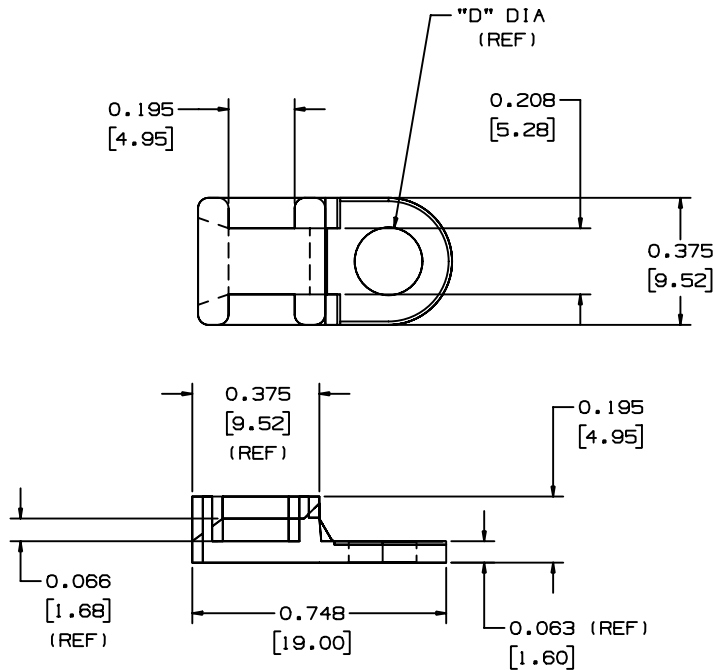


- Low profile and versatile these screw-installed mounts can be ideal for applications where space is limited. Designed for four-way cable tie insertion this mount can be mounted in-line or perpendicular to the wire bundle.
- 4-way cable tie entry makes part orientation fast and easy
- Install with a screw or rivet for a strong, secure installation
- Small overall size allows use where space is limited
- ‡ Cable Tie Cross Section Sizes: M = Miniature, I = Intermediate, S = Standard, HS = Heavy-Standard, LH = Light-Heavy, H = Heavy, HLM = Miniature *Tak-Ty*® Hook & Loop Ties.


■ Part Number	TA1S8-M
■ RoHS Compliancy Status	Compliant
■ Part Description	Cable Tie Mount - Screw Applied
■ Material	Nylon 6.6
■ Color	Natural
■ UL Recognized	E136577
■ Height (In.)	.20
■ Height (mm)	5.1
■ Length (In.)	.38
■ Length (mm)	19.1
■ Width (In.)	.75
■ Width (mm)	9.5
■ CE Compliant	CT-ACC4 / 10.96
■ Environment	Indoors
■ Flammability Rating	UL94 V-2
■ Hole Diameter (In.)	.17
■ Hole Diameter (mm)	4.3
■ Max. Bundle Diameter (mm)	4.8
■ Mounting Method	#8 (M4) Screw
■ Pricing Description	Tie Anchor Mount, #8 Screw (M4)
■ Screw Size	#8 (M4)
■ Screw Size Metric	M4
■ Used With Cable Ties	M, I, S
■ Min. Order UOM	PC
■ Min. Order Qty.	1000
■ BOM Qty. (# of Pkgs.)	

THIS COPY IS PROVIDED ON A RESTRICTED BASIS AND IS NOT TO BE USED IN ANY WAY DETRIMENTAL TO THE INTERESTS OF PANDUIT CORP.

PANDUIT PART NUMBER*	MAT'L SUFFIX	MATERIAL	"D"	REC. FAST.	WEIGHT lbs/100 pcs (g)/100 pcs	USE WITH THESE CABLE TIE CROSS-SECTIONS
TA1S8	NONE	NYLON 6/6	0.170 (4.3)	#8 (M4) SCREW	0.07 (32.0)	MINIATURE INTERMEDIATE STANDARD
	-0	WEATHER RESISTANT NYLON				
	-30	HEAT STABILIZED NYLON				
	-69	FLAME RETARDANT NYLON				
TA1S10	NONE	NYLON 6/6	0.200 (5.1)	#10 (M5) SCREW	0.07 (32.0)	MINIATURE INTERMEDIATE STANDARD
	-0	WEATHER RESISTANT NYLON				



NOTES:
1. SEE CURRENT PRICE SHEET FOR PART NUMBER SUFFIX DESIGNATION FOR PACKAGE SIZE.

DIMENSIONS IN BRACKETS ARE METRIC [mm]	
CAD FILENAME/LAYERS GB0239EP_PB_TA1_02	
 CORP. TINLEY PARK, ILLINOIS	
TA1 - TIE ANCHOR MOUNT	
UNLESS OTHERWISE SPECIFIED, DIMENSIONAL TOLERANCES ARE: (.X) ±0.05 (1.3) (.XX) ±0.010 (0.25) (.XX) ±0.02 (0.5) ANGLES ± 5°	UNLESS OTHERWISE SPECIFIED, ALL DIMENSIONS ARE GIVEN IN INCHES, THIRD ANGLE PROJECTION.
DRAWN BY AJV	MAT'L: NONE
DATE 12/17/96	SCALE NONE
CHK'D	DWG NO. GB0239EP
SEE TABLE	DWG SIZE A

REV	DATE	BY	CHK	DESCRIPTION	ECN	R	CUST	SUP
2	7/9/02	JAD		UPDATED .195 (4.95) DIMENSION LINE	GB0239EP	2		