



## SST8H-D

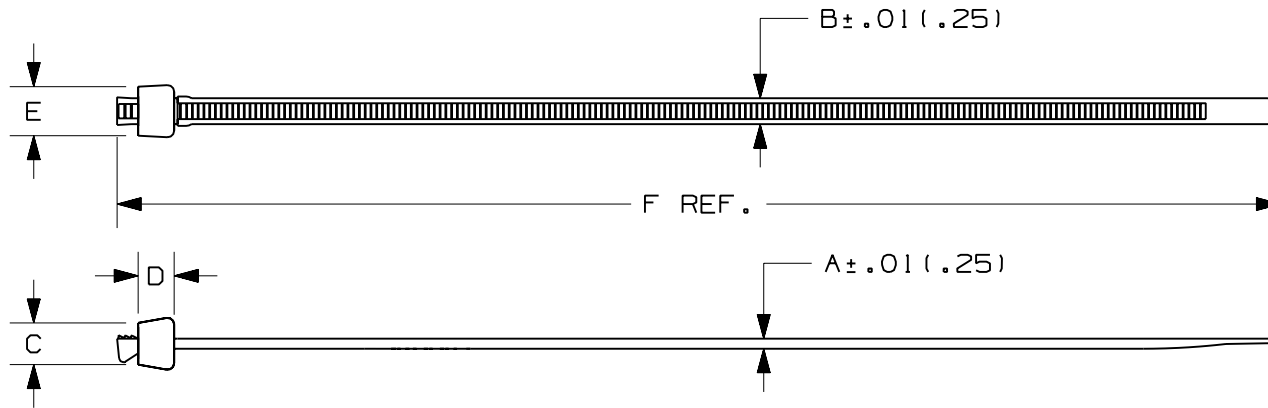


- For indoor use
- Used for normal bundling and through-panel applications
- Small head height allows more efficient use of space in compact areas
- Exclusive two-piece design offers the lowest threading force in the industry
- Average 14% lighter than one-piece cable ties
- Releasable prior to final tensioning for bundle modifications
- Straight Tip design

|                                     |   |
|-------------------------------------|---|
| ■ Part Number                       | SST8H-D   |
| ■ RoHS Compliancy Status            | Compliant   |
| ■ Part Description                  | Cable Tie, Releasable, 27.5", Light-Heavy cross section |
| ■ Product Type                      | Cable Ties  |
| ■ Material                          | Nylon 6.6   |
| ■ Color                             | Natural   |
| ■ CSA Certified                     | Yes   |
| ■ Mil. Std. Part Number             | MS3367-6-9  |
| ■ UL Listed (File #E56854)          | No  |
| ■ UL Recognized (File #E56854)      | Yes   |
| ■ Length (In.)                      | 27.5  |
| ■ Length (mm)                       | 699   |
| ■ Width (In.)                       | .300  |
| ■ Width (mm)                        | 7.6   |
| ■ CE Compliant                      | Yes   |
| ■ Cross Section                     | Light-Heavy   |
| ■ Head Height (In.)                 | .325  |
| ■ Head Height (mm)                  | 8.3   |
| ■ Head Width (In.)                  | .460  |
| ■ Head Width (mm)                   | 11.7  |
| ■ Locking Style                     | Releasable  |
| ■ Material Flammability Rating      | UL 94V-2  |
| ■ Max. Bundle Diameter (In.)        | 8.00  |
| ■ Max. Bundle Diameter (mm)         | 203   |
| ■ Max. Continuous Use Temperature   | 185°F (85°C)  |
| ■ Min. Loop Tensile Strength (Lbs.) | 120   |

|                                  |   |
|----------------------------------|---|
| ■ Min. Loop Tensile Strength (N) | 534   |
| ■ Pricing Description            | Cable Tie, 2-Piece, 27.5"L (699mm), Light-Heavy, Nylon, Natural |
| ■ Thickness (In.)                | .067  |
| ■ Thickness (mm)                 | 1.7   |
| ■ Tool                           | GTH, GS4H, GS4EH, PTH, STH2, ST3EH                              |
| ■ Min. Order UOM                 | PC  |
| ■ Min. Order Qty.                | 500   |
| ■ BOM Qty. (# of Pkgs.)          |   |

THIS COPY IS PROVIDED ON A RESTRICTED BASIS AND IS NOT TO BE USED IN ANY WAY DETRIMENTAL TO THE INTERESTS OF PANDUIT CORP.



| PANDUIT PART NO.* | BUNDLE DIA.  |               | A<br>in<br>(mm) | B<br>in<br>(mm) | C<br>in<br>(mm) | D<br>in<br>(mm) | E<br>in<br>(mm) | F<br>in<br>(mm) | MIN. LOOP TENSILE lbs. (N) | CROSS-SECTION | WEIGHT lbs./100pcs. (g) |
|-------------------|--------------|---------------|-----------------|-----------------|-----------------|-----------------|-----------------|-----------------|----------------------------|---------------|-------------------------|
|                   | MIN. in (mm) | MAX. in (mm)  |                 |                 |                 |                 |                 |                 |                            |               |                         |
| SST2H             | .06<br>(1.5) | 2.00<br>(51)  | .062<br>(1.6)   | .300<br>(7.6)   | .325<br>(8.3)   | .250<br>(6.4)   | .460<br>(11.7)  | 8.0<br>(203)    | 120 (534)                  | HEAVY         | .62 (280)               |
| SST4H             | .06<br>(1.5) | 4.00<br>(102) | .067<br>(1.7)   | .300<br>(7.6)   | .325<br>(8.3)   | .250<br>(6.4)   | .460<br>(11.7)  | 14.8<br>(376)   | 120 (534)                  | HEAVY         | 1.2 (537)               |
| SST8H             | .06<br>(1.5) | 8.00<br>(203) | .067<br>(1.7)   | .300<br>(7.6)   | .325<br>(8.3)   | .250<br>(6.4)   | .460<br>(11.7)  | 27.5<br>(699)   | 120 (534)                  | HEAVY         | 2.1 (939)               |

**NOTES:**

- \*1) SEE CURRENT PRICE SHEET FOR PART NUMBER SUFFIX DESIGNATION FOR PACKAGE SIZE AND PART COLOR.
- 2) RECOGNIZED UNDER THE COMPONENT PROGRAM OF UNDERWRITERS LABORATORIES INC.

DIMENSIONS IN PARENTHESES ARE IN METRIC UNITS.

**PANDUIT** CORP. TINLEY PARK, ILLINOIS

**STA-STRAP CABLE TIES  
SS SERIES**

| REV | DATE     | BY   | CHK | DESCRIPTION  | ECN  | R  | CUST | SUP |
|-----|----------|------|-----|--|------|----|------|-----|
| --  | ----     | --   |     | CORRECTED MATERIAL NAME TO NYLON 6.6                       | ---- | -- |      |     |
| 2   | 12-8-05  | ERW  |     | CORRECTED METRIC CONVERSION OF SST2H MAX. BUNDLE DIA. (51) | 5550 | 2  |      |     |
| --  | ----     | --   |     | REMOVED SST2.5H - OBSOLETE PART                            | ---- | -- |      |     |
| 1   | 11-27-01 | JABO | SP  | REVISED AND REDRAWN  | 5550 | 1  | SP   |     |

UNLESS OTHERWISE SPECIFIED, DIMENSIONAL TOLERANCES ARE:  
(.X) ± .0005 (XXX) ± .020(.51)  
(.XX) ± .02(.5) ANGLES ± .0005

UNLESS OTHERWISE SPECIFIED, ALL DIMENSIONS ARE GIVEN IN INCHES, THIRD ANGLE PROJECTION.

DRAWN BY  
JABO

MAT'L:

SCALE  
NONE

DATE  
11-27-01

NYLON 6.6

DRAWING NO.  
SS-5550  
SHEET 3 OF 3

DWG  
A  
SIZE

CHK'D  
SP