



## PRT3S-C

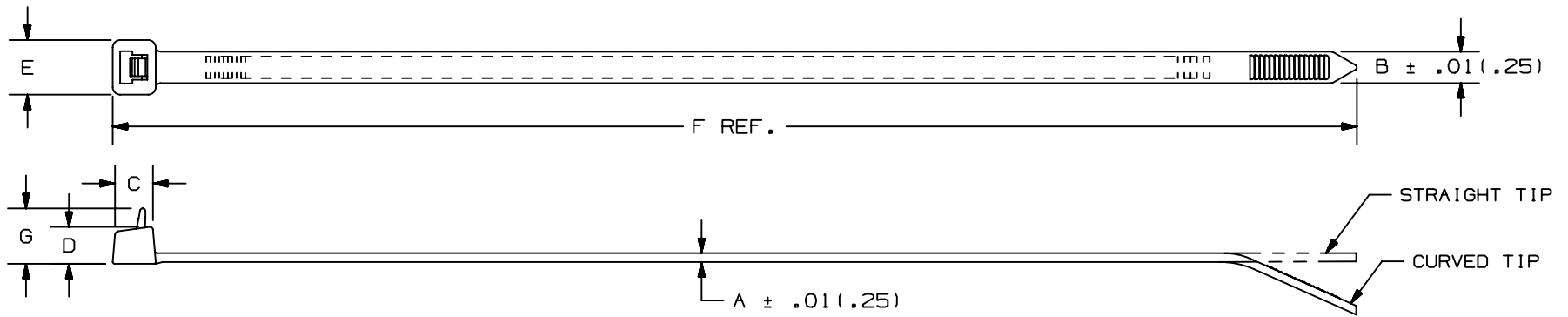


- For indoor use
- Extended release tab permits easy release and re-use where changes are anticipated during development, production or servicing in the field
- To release, grasp the head of the cable tie, deflect release tab, and pull the cable tie away from the bundle
- One-piece construction for consistent performance and reliability
- Curved tip is easy to pick up from flat surfaces and allows faster initial threading to speed installation (Light-Heavy cross section ties have a straight tip)

<input type="checkbox"/>	Part Number	PRT3S-C
<input type="checkbox"/>	RoHS Compliancy Status	Compliant
<input type="checkbox"/>	Part Description	Cable Tie, Releasable, 11.5", Standard cross section
<input type="checkbox"/>	Product Type	Cable Ties
<input type="checkbox"/>	Material	Nylon 6.6
<input type="checkbox"/>	Color	Natural
<input type="checkbox"/>	CSA Certified	Yes
<input type="checkbox"/>	UL Listed (File #E56854)	Yes
<input type="checkbox"/>	UL Recognized (File #E56854)	Yes
<input type="checkbox"/>	Length (In.)	11.5
<input type="checkbox"/>	Length (mm)	292
<input type="checkbox"/>	Width (In.)	.190
<input type="checkbox"/>	Width (mm)	4.8
<input type="checkbox"/>	CE Compliant	Yes
<input type="checkbox"/>	Cross Section	Standard
<input type="checkbox"/>	Head Height (In.)	.219
<input type="checkbox"/>	Head Height (mm)	5.6
<input type="checkbox"/>	Head Width (In.)	.337
<input type="checkbox"/>	Head Width (mm)	8.6
<input type="checkbox"/>	Locking Style	Releasable
<input type="checkbox"/>	Material Flammability Rating	UL 94V-2
<input type="checkbox"/>	Max. Bundle Diameter (In.)	3.00
<input type="checkbox"/>	Max. Bundle Diameter (mm)	76
<input type="checkbox"/>	Max. Continuous Use Temperature	185°F (85°C)
<input type="checkbox"/>	Min. Loop Tensile Strength (Lbs.)	50
<input type="checkbox"/>	Min. Loop Tensile Strength (N)	222

<input type="checkbox"/> Pricing Description	Cable Tie, Releasable, 11.5"L (292mm), Standard, Nylon, Natural
<input type="checkbox"/> Thickness (In.)	.052
<input type="checkbox"/> Thickness (mm)	1.3
<input type="checkbox"/> Tool	Hand install only
<input type="checkbox"/> Min. Order UOM	PC
<input type="checkbox"/> Min. Order Qty.	100
<input type="checkbox"/> BOM Qty. (# of Pkgs.)	

THIS COPY IS PROVIDED ON A RESTRICTED BASIS AND IS NOT TO BE USED IN ANY WAY DETRIMENTAL TO THE INTERESTS OF PANDUIT CORP.



PANDUIT * PART NO.	BUNDLE DIA.		A in (mm)	B in (mm)	C in (mm)	D in (mm)	E in (mm)	F in (mm)	G in (mm)	MIN. LOOP TENSILE lbs (N)	CROSS- SECTION	TIP STYLE	WEIGHT lbs/100pcs (g)
	MIN in (mm)	MAX in (mm)											
PRT1S	.06 (1.5)	1.00 (25)	.052 (1.3)	.190 (4.8)	.258 (6.5)	.219 (5.6)	.316 (8.0)	4.8 (122)	.318 (8.1)	50 (222)	STANDARD	CURVED	.13 (59)
PRT1.5S	.06 (1.5)	1.50 (38)	.052 (1.3)	.190 (4.8)	.258 (6.5)	.219 (5.6)	.316 (8.0)	6.3 (160)	.318 (8.1)	50 (222)	STANDARD	CURVED	.26 (119)
PRT2S	.06 (1.5)	1.88 (48)	.052 (1.3)	.190 (4.8)	.258 (6.5)	.219 (5.6)	.316 (8.0)	7.4 (188)	.318 (8.1)	50 (222)	STANDARD	CURVED	.29 (132)
PRT3S	.06 (1.5)	3.00 (76)	.052 (1.3)	.190 (4.8)	.265 (6.7)	.219 (5.6)	.337 (8.6)	11.5 (292)	.318 (8.1)	50 (222)	STANDARD	CURVED	.45 (205)
PRT4S	.06 (1.5)	4.00 (102)	.052 (1.3)	.190 (4.8)	.265 (6.7)	.219 (5.6)	.337 (8.6)	14.5 (368)	.318 (8.1)	50 (222)	STANDARD	CURVED	.56 (255)

NOTES:

\* 1) SEE CURRENT PRICE SHEET FOR PART NUMBER SUFFIX DESIGNATIONS FOR PACKAGE SIZE AND PART COLOR.

										DIMENSIONS IN PARENTHESES ARE IN METRIC UNITS.				
										PANDUIT CORP. TINLEY PARK, ILLINOIS				
										PAN-TY CABLE TIES RELEASABLE SERIES				
										UNLESS OTHERWISE SPECIFIED, DIMENSIONAL TOLERANCES ARE: (.X) ± ----- (.XXX) ± .020(.51) (.XX) ± .02(.5) ANGLES ± -----		UNLESS OTHERWISE SPECIFIED, ALL DIMENSIONS ARE GIVEN IN INCHES, THIRD ANGLE PROJECTION.		
--	-----	---	CORRECTED MATERIAL NAME				----	--	DRAWN BY CEW		MAT'L: NYLON 6.6		SCALE NONE	
13	6/22/05	ERW	ADDED TOLERANCE TO DIMENSIONS 'A' & 'B'				4472	13	DATE 7-31-85		DRAWING NO. SS-4472		DWG A	
REV	DATE	BY	CHK	DESCRIPTION				ECN	R	CUST	SUP	SHEET 1 OF 2		SIZE A