



PRT1.5S-M

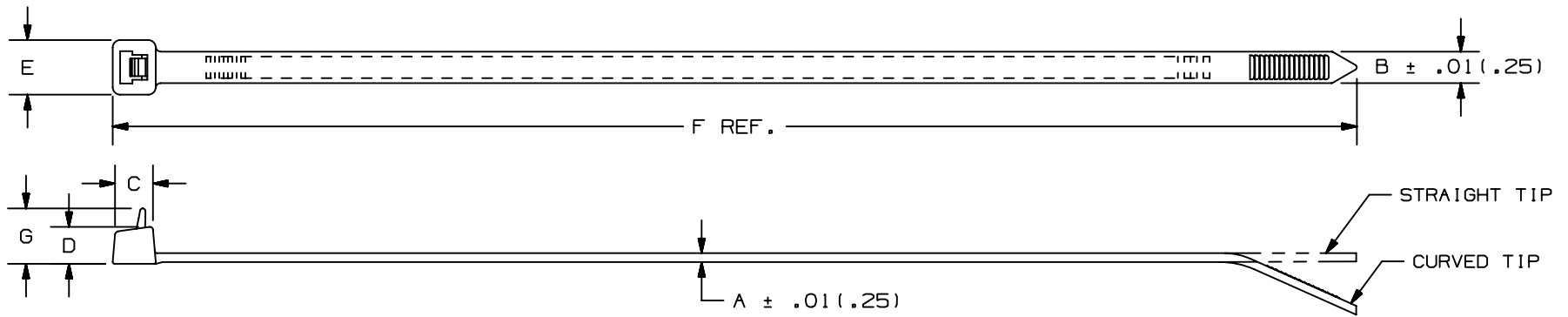


- For indoor use
- Extended release tab permits easy release and re-use where changes are anticipated during development, production or servicing in the field
- To release, grasp the head of the cable tie, deflect release tab, and pull the cable tie away from the bundle
- One-piece construction for consistent performance and reliability
- Curved tip is easy to pick up from flat surfaces and allows faster initial threading to speed installation (Light-Heavy cross section ties have a straight tip)

■ Part Number	PRT1.5S-M
■ RoHS Compliancy Status	Compliant
■ Part Description	Cable Tie, Releasable, 6.3", Standard cross section
■ Product Type	Cable Ties
■ Material	Nylon 6.6
■ Color	Natural
■ CSA Certified	Yes
■ UL Listed (File #E56854)	Yes
■ UL Recognized (File #E56854)	Yes
■ Length (In.)	6.3
■ Length (mm)	160
■ Width (In.)	.190
■ Width (mm)	4.8
■ CE Compliant	Yes
■ Cross Section	Standard
■ Head Height (In.)	.219
■ Head Height (mm)	5.6
■ Head Width (In.)	.316
■ Head Width (mm)	8.0
■ Locking Style	Releasable
■ Material Flammability Rating	UL 94V-2
■ Max. Bundle Diameter (In.)	1.50
■ Max. Bundle Diameter (mm)	38
■ Max. Continuous Use Temperature	185°F (85°C)
■ Min. Loop Tensile Strength (Lbs.)	50
■ Min. Loop Tensile Strength (N)	222

■ Pricing Description	Cable Tie, Releasable, 6.3"L (160mm), Standard, Nylon, Natural
■ Thickness (In.)	.052
■ Thickness (mm)	1.3
■ Tool	Hand install only
■ Min. Order UOM	PC
■ Min. Order Qty.	1000
■ BOM Qty. (# of Pkgs.)	

THIS COPY IS PROVIDED ON A RESTRICTED BASIS AND IS NOT TO BE USED IN ANY WAY DETRIMENTAL TO THE INTERESTS OF PANDUIT CORP.



PANDUIT * PART NO.	BUNDLE DIA.		A in (mm)	B in (mm)	C in (mm)	D in (mm)	E in (mm)	F in (mm)	G in (mm)	MIN. LOOP TENSILE lbs (N)	CROSS- SECTION	TIP STYLE	WEIGHT lbs/100pcs (g)
	MIN in (mm)	MAX in (mm)											
PRT1S	.06 (1.5)	1.00 (25)	.052 (1.3)	.190 (4.8)	.258 (6.5)	.219 (5.6)	.316 (8.0)	4.8 (122)	.318 (8.1)	50 (222)	STANDARD	CURVED	.13 (59)
PRT1.5S	.06 (1.5)	1.50 (38)	.052 (1.3)	.190 (4.8)	.258 (6.5)	.219 (5.6)	.316 (8.0)	6.3 (160)	.318 (8.1)	50 (222)	STANDARD	CURVED	.26 (119)
PRT2S	.06 (1.5)	1.88 (48)	.052 (1.3)	.190 (4.8)	.258 (6.5)	.219 (5.6)	.316 (8.0)	7.4 (188)	.318 (8.1)	50 (222)	STANDARD	CURVED	.29 (132)
PRT3S	.06 (1.5)	3.00 (76)	.052 (1.3)	.190 (4.8)	.265 (6.7)	.219 (5.6)	.337 (8.6)	11.5 (292)	.318 (8.1)	50 (222)	STANDARD	CURVED	.45 (205)
PRT4S	.06 (1.5)	4.00 (102)	.052 (1.3)	.190 (4.8)	.265 (6.7)	.219 (5.6)	.337 (8.6)	14.5 (368)	.318 (8.1)	50 (222)	STANDARD	CURVED	.56 (255)

NOTES:

* 1) SEE CURRENT PRICE SHEET FOR PART NUMBER SUFFIX DESIGNATIONS FOR PACKAGE SIZE AND PART COLOR.

										DIMENSIONS IN PARENTHESES ARE IN METRIC UNITS.				
										PANDUIT CORP. TINLEY PARK, ILLINOIS				
										PAN-TY CABLE TIES RELEASABLE SERIES				
										UNLESS OTHERWISE SPECIFIED, DIMENSIONAL TOLERANCES ARE: (.X) ± ----- (.XXX) ± .020(.51) (.XX) ± .02(.5) ANGLES ± -----		UNLESS OTHERWISE SPECIFIED, ALL DIMENSIONS ARE GIVEN IN INCHES, THIRD ANGLE PROJECTION.		
--	-----	---	CORRECTED MATERIAL NAME				----	--	DRAWN BY CEW		MAT'L: NYLON 6.6		SCALE NONE	
13	6/22/05	ERW	ADDED TOLERANCE TO DIMENSIONS 'A' & 'B'				4472	13	DATE 7-31-85		DRAWING NO. SS-4472		DWG A	
REV	DATE	BY	CHK	DESCRIPTION				ECN	R	CUST	SUP	SHEET 1 OF 2		SIZE A