



## PM2H25-C



- Push mounts require no adhesive backing or additional mounting hardware. They are inserted into pre-drilled holes. Can be used where only one side of the panel is accessible. This push mount does not have tensioning wings.

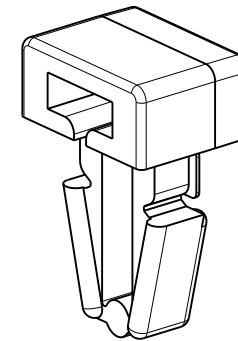
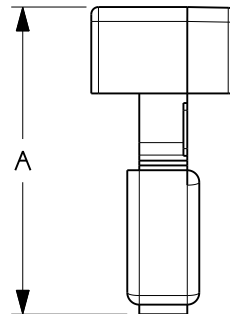
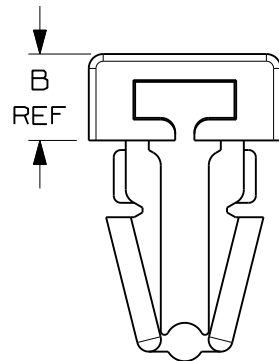
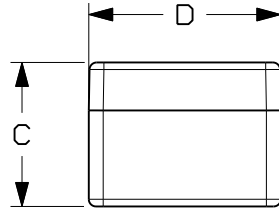
■ Part Number	PM2H25-C
■ RoHS Compliancy Status	Compliant
■ Part Description	Push Barb Cable Tie Mount
■ Product Type	Cable Tie Mounts - Push Mount
■ Material	Nylon 6.6
■ Color	Natural
■ UL Recognized	E136577
■ Height (In.)	.18
■ Height (mm)	4.6
■ Width (In.)	.38
■ Width (mm)	9.6
■ CE Compliant	CT-ACC4 / 10.96
■ Environment	Indoors
■ Flammability Rating	UL94 V-2
■ Max. Bundle Diameter (mm)	4.8
■ Max. Panel Thickness (In.)	.125
■ Max. Panel Thickness (mm)	3.2
■ Mounting Method	Push Barb
■ Panel Hole Diameter (In.)	.250
■ Panel Hole Diameter (mm)	6.4
■ Pricing Description	Cable Tie Mount, Push Mount, NAT
■ Thickness (In.)	.30
■ Thickness (mm)	7.6
■ Used With Cable Ties	M, I, S
■ Min. Order UOM	PC
■ Min. Order Qty.	100


THIS COPY IS PROVIDED ON A RESTRICTED BASIS AND IS NOT TO BE USED IN ANY WAY DETRIMENTAL TO THE INTERESTS OF PANDUIT CORP.

PANDUIT PART NO.	USE WITH THESE CABLE TIE CROSS-SECTIONS	DIMENSIONS				WEIGHT g/100pcs
		A	B	C	D	
PM2H25	MINIATURE INTERMEDIATE STANDARD	.62 (15.8)	.18 (4.6) REF	.30 (7.6)	.38 (9.6)	.10 (.45)

NOTES:

- SEE CURRENT PRICE SHEET FOR PART NUMBER SUFFIX DESIGNATION FOR PACKAGE SIZE, AND COLOR.
- (\* ) DIMENSIONAL VARIANCE IS POSSIBLE DUE TO MOLDING PROCESS RELATED SINK MARKS.
- APPLICATION SPECIFICATION:  
HOLE DIAMETER: .245 (6.3) - .255 (6.5)  
PANEL THICKNESS: .125 (3.2) (MAX)



DIMENSIONS IN BRACKETS ARE METRIC [ mm ]	
CAD FILENAME/LAYERS G002391J_PB_PM2H25_03	
 <b>PANDUIT</b> CORP. TINLEY PARK, ILLINOIS	
PUSH MOUNT PM2H25	
UNLESS OTHERWISE SPECIFIED, DIMENSIONAL TOLERANCES ARE: (.X) ±0.05 (1.3) (.XXX) ±0.010 (0.25) (.XX) ±0.02 (0.5) ANGLES ±5°	UNLESS OTHERWISE SPECIFIED, ALL DIMENSIONS ARE GIVEN IN INCHES, THIRD ANGLE PROJECTION.
DRAWN BY LGG DATE 01-20-02 CHK'D	MAT'L: NYLON 6/6 SCALE 5:2 DRAWING NO. G002391J DWG SIZE A

REV	DATE	BY	CHK	DESCRIPTION	ECN	R	CUST	SUP
3	5/27/08	DJSM		CORRECTED FILE NAME	GB02391J	3		
2	5/22/08	DJSM		TABULARIZED DIMENSIONS, REMOVED WINDOW DIMENSIONS	GB02391J	2		
1	02/05/03	MSAD		.070 +/- .015 WAS .070 +/- .010 (1.8 +/- 0.38) (1.8 +/- 0.25)	GB02391J	1		
R	01/10/02	LGG		INITIAL RELEASE	GB02391J	R		