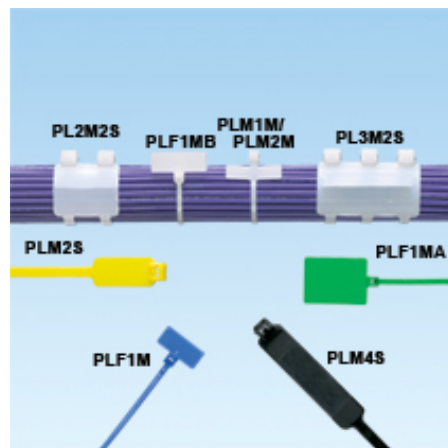




PLF1M-M

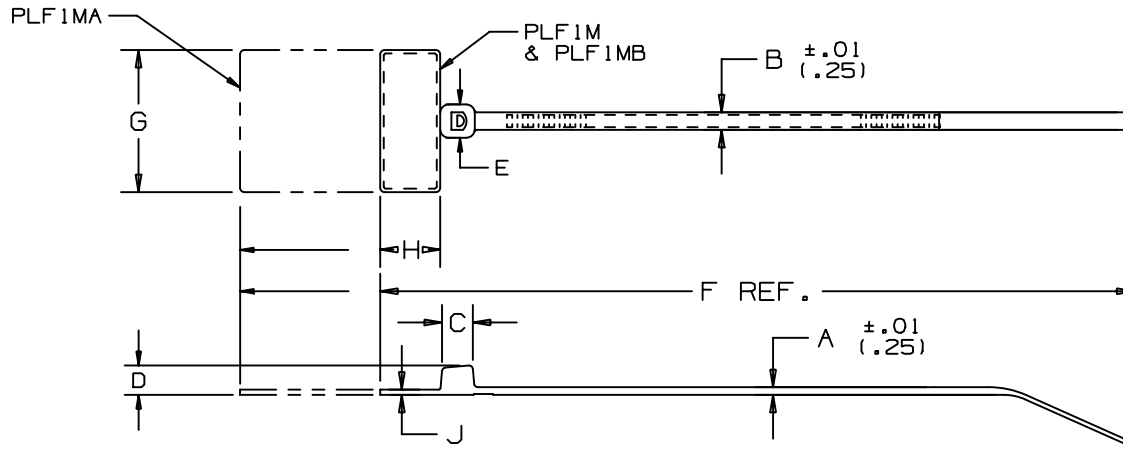


- For indoor use
- Used to fasten and identify bundles at the same time
- One-piece construction for consistent performance and reliability
- Can be marked with *PANDUIT* marker pens or custom imprinted with text, symbols, or trademarks available using *PANDUIT* Custom Hot Stamping Service
- Curved tip is easy to pick up from flat surfaces and allows faster initial threading to speed installation

• Part Number	PLF1M-M
• RoHS Compliancy Status	Compliant
• Part Description	Marker Tie, Flag, 4.3", Miniature cross section
• Product Type	Cable Ties
• Material	Nylon 6.6
• Color	Natural
• CSA Certified	Yes
• UL Listed (File #E56854)	No
• UL Recognized (File #E56854)	Yes
• Length (In.)	4.3
• Length (mm)	109
• Width (In.)	.098
• Width (mm)	2.5
• CE Compliant	Yes
• Cross Section	Miniature
• Head Height (In.)	.154
• Head Height (mm)	3.9
• Head Width (In.)	.180
• Head Width (mm)	4.6
• Locking Style	Locking
• Marker Type	Flag
• Marker Write-On Area (In.)	.31 x .75
• Marker Write-On Area (mm)	7.9 x 19.1
• Material Flammability Rating	UL 94V-2
• Max. Bundle Diameter (In.)	.87
• Max. Bundle Diameter (mm)	22

▪ Max. Continuous Use Temperature	185°F (85°C)
▪ Min. Loop Tensile Strength (Lbs.)	18
▪ Min. Loop Tensile Strength (N)	80
▪ Pricing Description	Marker Tie, Flag, 4.3"L (109mm), Miniature, Nylon, Natural
▪ Thickness (In.)	.045
▪ Thickness (mm)	1.1
▪ Tool	GTS, GTSL, GS2B, PTS, PPTS, STS2
▪ Min. Order UOM	PC
▪ Min. Order Qty.	1000
▪ BOM Qty. (# of Pkgs.)	

THIS COPY IS PROVIDED ON A RESTRICTED BASIS AND IS NOT TO BE USED IN ANY WAY DETRIMENTAL TO THE INTERESTS OF PANDUIT CORP.



PANDUIT * PART NO.	BUNDLE DIA.		A	B	C	D	E	F	G	H	J	WRITE-ON AREA	MINIMUM LOOP TENSILE	CROSS-SECTION	WEIGHT LBS/100 (G)
	MIN. IN. (mm)	MAX. IN. (mm)	IN. (mm)	IN. (mm)	IN. (mm)	IN. (mm)	IN. (mm)	IN. (mm)	IN. (mm)	IN. (mm)	IN. (mm)	IN. (mm)	lbs. (N)		
PLF 1M	.06 (1.5)	.87 (22.1)	.045 (1.1)	.098 (2.5)	.177 (4.5)	.154 (3.9)	.180 (4.6)	4.3 (109)	.812 (20.6)	.366 (9.3)	.028 (.71)	.31 X .75 (7.9 X 19.1)	18 (80)	MINIATURE	.10 (46)
PLF 1MA	.06 (1.5)	.87 (22.1)	.045 (1.1)	.098 (2.5)	.177 (4.5)	.154 (3.9)	.180 (4.6)	5.1 (130)	.812 (20.6)	1.10 (28.)	.028 (.71)	.76 X 1.04 (19.1 X 26.4)	18 (80)	MINIATURE	.16 (73)
PLF 1MB	.06 (1.5)	.75 (19)	.045 (1.1)	.098 (2.5)	.177 (4.5)	.154 (3.9)	.180 (4.6)	3.98 (101)	.980 (24.9)	.366 (9.3)	.028 (.71)	.31 X .92 (7.9 X 23.4)	18 (80)	MINIATURE	.10 (46)

NOTES:

* SEE CURRENT PRICE SHEET FOR PART NUMBER SUFFIX DESIGNATION FOR PACKAGE SIZE AND PART COLOR.
RECOGNIZED UNDER THE COMPONENT PROGRAM OF UNDERWRITERS LABORATORIES INC.

										DIMENSIONS IN PARENTHESES ARE IN METRIC UNITS						
										<p>PANDUIT CORP. TINLEY PARK, ILLINOIS</p> <p>PAN-TY® FLAG MARKER TIE</p> <p>PLF SERIES</p>						
										<p>UNLESS OTHERWISE SPECIFIED, DIMENSIONAL TOLERANCES ARE: (.X) ± .005 (.127) (.XXX) ± .020 (.51) (.XX) ± .02 (.51) ANGLES ± .005</p>		<p>UNLESS OTHERWISE SPECIFIED, ALL DIMENSIONS ARE GIVEN IN INCHES, THIRD ANGLE PROJECTION.</p>				
										<p>DRAWN BY L.V./AJC</p>		<p>MAT'L: NYLON 6/6</p>		<p>SCALE NONE</p>		
										<p>DATE 2-10-71</p>		<p>DRAWING NO. SS-2723</p>		<p>DWG A SIZE</p>		
										<p>CHK'D HVP</p>						
11	2/13/03	JABO		ADDED WRITE-ON AREA FOR ALL PARTS				2723	11							
REV	DATE	BY	CHK	DESCRIPTION				ECN - R	CUST	SUP						