



## PLC1.5I-S8-M

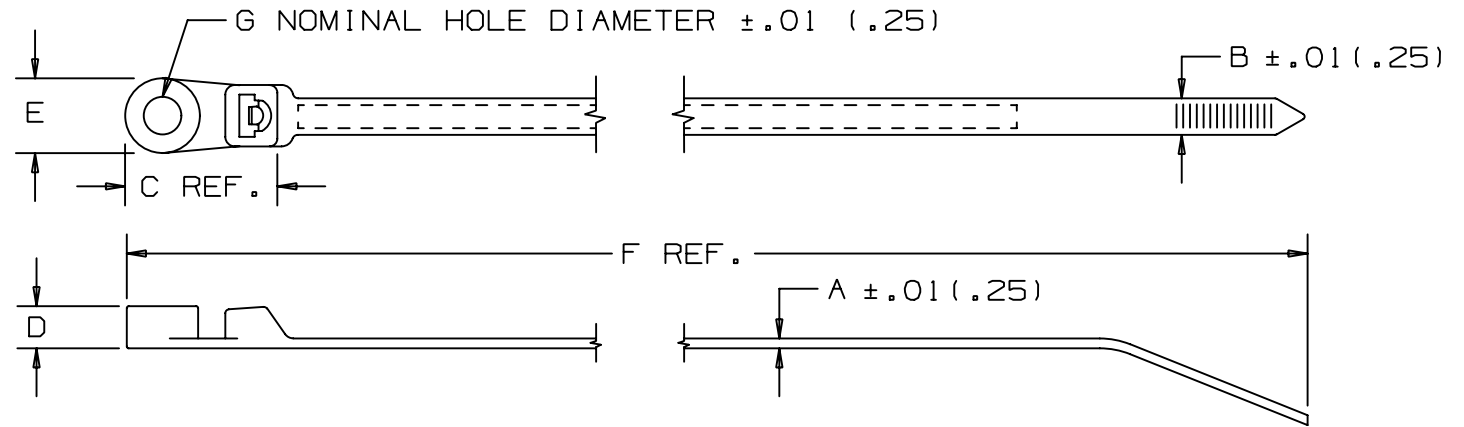
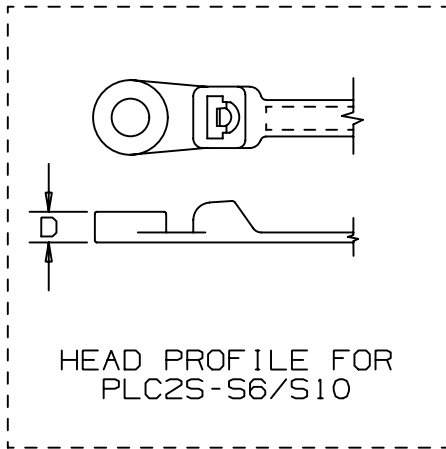


- For indoor use
- Used to secure a cable bundle to another surface such as a control panel, communication rack, wall or ceiling
- Design allows for bundling before or after screwing clamp in place
- One-piece construction for consistent performance and reliability
- Curved tip is easy to pick up from flat surfaces and allows faster initial threading to speed installation

■ Part Number	PLC1.5I-S8-M
■ RoHS Compliancy Status	Compliant
■ Part Description	Clamp Tie, 6.1", Intermediate cross section
■ Product Type	Cable Ties
■ Material	Nylon 6.6
■ Color	Natural
■ CSA Certified	Yes
■ UL Listed (File #E56854)	Yes
■ UL Recognized (File #E56854)	Yes
■ Length (In.)	6.1
■ Length (mm)	155
■ Width (In.)	.135
■ Width (mm)	3.4
■ Boss Height (In.)	.166
■ Boss Height (mm)	4.2
■ Boss Width (In.)	.335
■ Boss Width (mm)	8.5
■ CE Compliant	Yes
■ Cross Section	Intermediate
■ Locking Style	Locking
■ Material Flammability Rating	UL 94V-2
■ Max. Bundle Diameter (In.)	1.25
■ Max. Bundle Diameter (mm)	32
■ Max. Continuous Use Temperature	185°F (85°C)
■ Min. Loop Tensile Strength (Lbs.)	40
■ Min. Loop Tensile Strength (N)	178

■ Nominal Hole Diameter (In.)	.174
■ Nominal Hole Diameter (mm)	4.4
■ Pricing Description	Clamp Tie, 6.1"L (155mm), #8 (M4) Screw, Intermediate, Nylon, Natural
■ Screw Size	#8
■ Screw Size Metric	M4
■ Thickness (In.)	.045
■ Thickness (mm)	1.1
■ Tool	GTS, GTSL, GS2B, PTS, PPTS, STS2
■ Min. Order UOM	PC
■ Min. Order Qty.	1000
■ BOM Qty. (# of Pkgs.)	

THIS COPY IS PROVIDED ON A RESTRICTED BASIS AND IS NOT TO BE USED IN ANY WAY DETRIMENTAL TO THE INTERESTS OF PANDUIT CORP.



PANDUIT PART NO. *	BUNDLE DIA.		A In (mm)	B In (mm)	C In (mm)	D In (mm)	E In (mm)	F In (mm)	G In (mm)	MIN. LOOP TENSILE lbs (N)	CROSS- SECTION	RECM. FASTENER	WEIGHT lbs/100pcs (g)
	MIN. In (mm)	MAX. In (mm)											
PLC1M-S4	.06 (1.5)	.75 (19)	.045 (1.1)	.100 (2.5)	.542 (13.8)	.153 (3.9)	.239 (6.1)	4.3 (109.2)	.122 (3.1)	18 (80)	MINIATURE	#4 (M2.5) SCREW	.08 (36)
PLC1.5I-S8	.06 (1.5)	1.25 (32)	.045 (1.1)	.135 (3.4)	.694 (17.6)	.166 (4.2)	.335 (8.5)	6.1 (154.9)	.174 (4.4)	40 (178)	INTERMEDIATE	#8 (M4) SCREW	.18 (82)
PLC2S-S6	.06 (1.5)	1.84 (47)	.047 (1.2)	.190 (4.8)	.765 (19.4)	.160 (4.1)	.373 (9.5)	7.9 (200.7)	.148 (3.8)	50 (222)	STANDARD	#6 (M3) SCREW	.32 (145)
PLC2S-S10	.06 (1.5)	1.84 (47)	.047 (1.2)	.190 (4.8)	.765 (19.4)	.160 (4.1)	.373 (9.5)	7.9 (200.7)	.200 (5.1)	50 (222)	STANDARD	#10 (M5) SCREW	.32 (145)
PLC3S-S10	.06 (1.5)	3.00 (76)	.052 (1.3)	.190 (4.8)	.765 (19.4)	.220 (5.6)	.373 (9.5)	12 (304.8)	.200 (5.1)	50 (222)	STANDARD	#10 (M5) SCREW	.50 (227)
PLC4S-S10	.06 (1.5)	4.00 (102)	.052 (1.3)	.190 (4.8)	.765 (19.4)	.220 (5.6)	.373 (9.5)	15 (381.0)	.200 (5.1)	50 (222)	STANDARD	#10 (M5) SCREW	.59 (268)

NOTES:

- \*1) SEE CURRENT PRICE SHEET FOR PART NUMBER SUFFIX DESIGNATION FOR PACKAGE SIZE AND PART COLOR
- 2) RECOGNIZED UNDER THE COMPONENT PROGRAM OF UNDERWRITERS LABORATORIES INC.

SS\_2724\_18.PRT

CAD FILENAME/LAYERS

DIMENSIONS IN PARENTHESES ARE IN METRIC UNITS

PANDUIT CORP. TINLEY PARK, ILLINOIS

PAN-TY LOCKING CLAMP TIE  
PLC SERIES

UNLESS OTHERWISE SPECIFIED,  
DIMENSIONAL TOLERANCES ARE:  
(.X)  $\pm$  ---- (.XXX)  $\pm$  .020(.51)  
(.XX)  $\pm$  .02(.5) ANGLES  $\pm$  ----

UNLESS OTHERWISE SPECIFIED,  
ALL DIMENSIONS ARE GIVEN  
IN INCHES, THIRD ANGLE PROJECTION.

REV	DATE	BY	CHK	DESCRIPTION	ECN	R	CUST	SUP	DRAWN BY	MAT'L:	SCALE	DWG
--	-----	---		CHANGED MAX. BUNDLE DIA. METRIC NUMBERS TO WHOLE NUMBERS	----	--			L.V./AJC		NONE	
18	5/31/05	ERW		CHANGED DIMENSION 'G' FROM A TOLERANCE TO A NOMINAL HOLE DIAMETER	2724	18			DATE 2-11-71	NYLON 6.6		
									CHK'D HVP			A SIZE
											SS-2724	