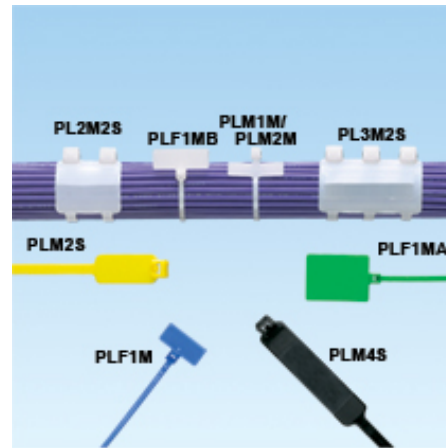




## PL2M2S-L

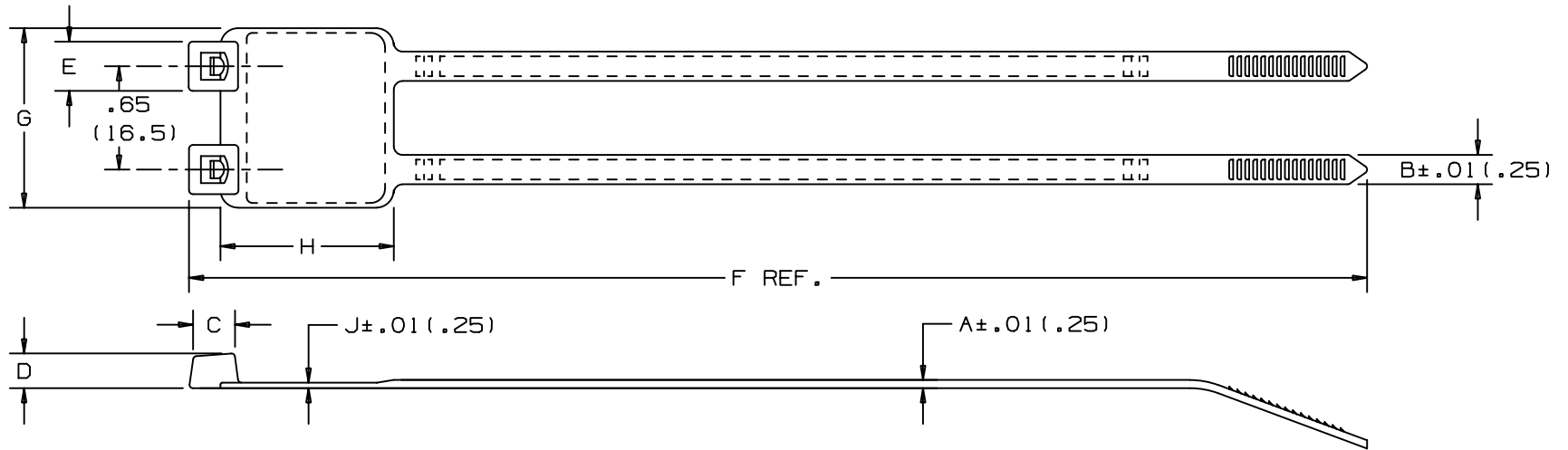


- For indoor use
- Used to fasten and identify bundles at the same time
- One-piece construction for consistent performance and reliability
- Can be marked with *PANDUIT* marker pens or custom imprinted with text, symbols, or trademarks available using *PANDUIT* Custom Hot Stamping Service
- Curved tip is easy to pick up from flat surfaces and allows faster initial threading to speed installation

■ Part Number	PL2M2S-L
■ RoHS Compliancy Status	Compliant
■ Part Description	Marker Tie, Wrap, 7.4", Standard cross section
■ Product Type	Cable Ties
■ Material	Nylon 6.6
■ Color	Natural
■ CSA Certified	Yes
■ Mil. Std. Part Number	MS3368-3-9C
■ UL Listed (File #E56854)	No
■ UL Recognized (File #E56854)	Yes
■ Length (In.)	7.4
■ Length (mm)	188
■ Width (In.)	.185
■ Width (mm)	4.7
■ CE Compliant	Yes
■ Cross Section	Standard
■ Head Height (In.)	.220
■ Head Height (mm)	5.6
■ Head Width (In.)	.320
■ Head Width (mm)	8.1
■ Locking Style	Locking
■ Marker Type	Wrap
■ Marker Write-On Area (In.)	.87 x 1.07
■ Marker Write-On Area (mm)	22.1 x 27.2
■ Material Flammability Rating	UL 94V-2
■ Max. Bundle Diameter (In.)	1.75

▪ Max. Bundle Diameter (mm)	45
▪ Max. Continuous Use Temperature	185°F (85°C)
▪ Min. Loop Tensile Strength (Lbs.)	50
▪ Min. Loop Tensile Strength (N)	222
▪ Pricing Description	Marker Tie, Wrap, 7.4"L (188mm), Standard, Nylon, Natural
▪ Thickness (In.)	.052
▪ Thickness (mm)	1.3
▪ Tool	GTS, GTSL, GS2B, GTH, GS4H, PTS, PTH, PPTS, STS2, STH2
▪ Min. Order UOM	PC
▪ Min. Order Qty.	50
▪ BOM Qty. (# of Pkgs.)	

THIS COPY IS PROVIDED ON A RESTRICTED BASIS AND IS NOT TO BE USED IN ANY WAY DETRIMENTAL TO THE INTERESTS OF PANDUIT CORP.



PANDUIT PART NO.*	BUNDLE DIA.		A in (mm)	B in (mm)	C in (mm)	D in (mm)	E in (mm)	F in (mm)	G in (mm)	H in (mm)	J in (mm)	WRITE-ON AREA in (mm)	MIN LOOP TENSILE lbs (N)	CROSS- SECTION	WEIGHT lbs/100pcs. (g)
	MIN. in (mm)	MAX. in (mm)													
PL2M2S	.37 (9.5)	1.75 (45)	.052 (1.3)	.185 (4.7)	.258 (6.6)	.220 (5.6)	.320 (8.1)	7.4 (188)	1.17 (29.7)	1.09 (27.7)	.035 (.9)	.87 X 1.07 (22.1 X 27.2)	50 ** (222)	STANDARD	.72 (326)

**NOTES:**

- \*1) SEE CURRENT PRICE SHEET FOR PART NUMBER SUFFIX DESIGNATION FOR PACKAGE SIZE AND PART COLOR.
- \*\*2) LOOP TENSILE IS PER LEG OF STRAP.

REV	DATE	BY	CHK	DESCRIPTION	ECN - R	CUST	SUP	CHK'D	DATE	DRAWN BY	MAT'L:	SCALE	DRAWING NO.	DWG SIZE
5	3/10/03	JABO		CORRECTED G DIMENSION TO 1.17, WAS 1.13	17670	5			9-16-82	SARGIS	NYLON 6/6	NONE	SS-17670	A

CAD FILENAME/LAYERS  
DIMENSIONS IN PARENTHESES ARE IN METRIC UNITS.

**PANDUIT** CORP. TINLEY PARK, ILLINOIS

PAN-TY® MARKER TIE  
PLM SERIES

UNLESS OTHERWISE SPECIFIED,  
DIMENSIONAL TOLERANCES ARE:  
(.X) ± ---- (.XXX) ± .020(.51)  
(.XX) ± .02(.5) ANGLES ± ----

UNLESS OTHERWISE SPECIFIED,  
ALL DIMENSIONS ARE GIVEN  
IN INCHES, THIRD ANGLE PROJECTION.