



Current refinements (click  to remove)

[Search Tips](#) 
 [Region](#)  [USA](#) [Product Family](#)  [Ring Terminal, Large Wire Non-Insulated](#) [Text Search: 'P8-14R-Q'](#)
Your search criteria matched only one product, shown below.


- Designed for use with #8 - #2 AWG copper wire
- Ring tongue design assures a secure connection in high vibration applications
- Internal barrel serrations assure good wire contact and maximum tensile strength
- Brazed seam protects terminal barrel from splitting during the crimp process
- Barrel of terminal internally beveled to provide quick and easy wire insertion
- Maximum recommended operating temperature 302°F (150°C)

‡UL and CSA approved tooling/product combinations.

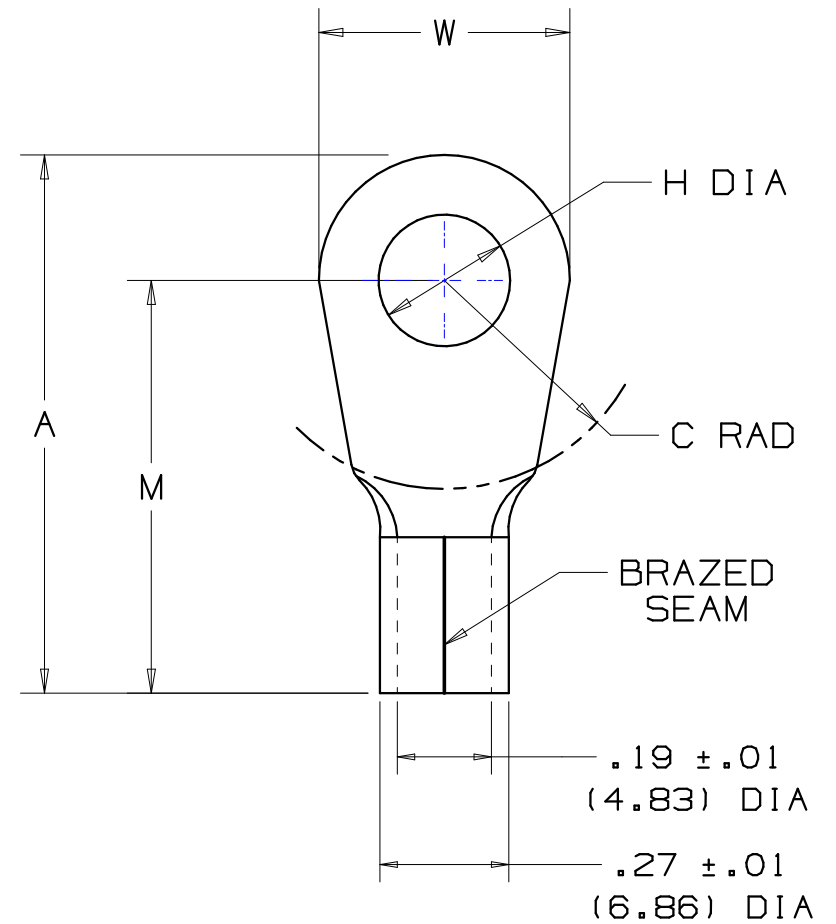
| | |
|--------------------------------|--|
| Part Number: | P8-14R-Q |
| RoHS Compliancy Status: | Compliant |
| Part Description: | Ring terminal, large wire, 8 AWG, 1/4" stud size, non-insulated. |
| Product Type: | Terminals |
| CSA Certified: | Yes |
| UL Listed: | Yes |
| Length (In.): | 1.14 |
| Width (In.): | .47 |
| Angle: | straight |
| Clearance: | .43 |
| Stock: | .04 |
| Stud Size: | 1/4" |
| Tool: | CT-1701‡ |
| Wire Range: | 8 AWG |
| Wire Range (mm ²): | 10 |
| Min. Order UOM: | PC |
| Min. Order Qty.: | 25 |

BOM Qty. (# of Pkgs.)

[Add to My Catalog](#)

 Please [register](#) to utilize the 'Bill of Materials', 'Submit Quotes' and 'My Catalog' features.

| PANDUIT PART NUMBER | | STUD SIZE | DIMENSIONS in. | | | | |
|---------------------|----------|-----------|-----------------|----------------|----------------|----------------|----------------|
| PREFIX | PK | | A $\pm.03$ | W $\pm.01$ | C $\pm.02$ | M $\pm.03$ | H $\pm.01$ |
| *P8-8RN | -Q -T | #8 | 1.09 (27.69) | .36 (9.14) | .43 (10.92) | .91 (23.11) | .17 (4.32) |
| P8-8R | -Q -T | #8 | 1.12 (28.45) | .42 (10.67) | .43 (10.92) | .91 (23.11) | .17 (4.32) |
| P8-10R | -Q -T | #10 | 1.14 (28.96) | .47 (11.94) | .43 (10.92) | .91 (23.11) | .20 (5.08) |
| P8-14R | -Q -T | 1/4" | 1.14 (28.96) | .47 (11.94) | .43 (10.92) | .91 (23.11) | .27 (6.86) |
| P8-56R | -Q -T | 5/16" | 1.25 (31.75) | .59 (14.99) | .51 (12.95) | .95 (24.13) | .33 (8.38) |
| P8-38R | -Q -T | 3/8" | 1.25 (31.75) | .59 (14.99) | .51 (12.95) | .95 (24.13) | .39 (9.91) |
| P8-12R | -Q -T | 1/2" | 1.36 (34.54) | .82 (20.83) | .54 (13.72) | .95 (24.13) | .52 (13.21) |



NOTES:

- UL LISTED FOR: (EXC. P8-8RN)
A. 303° F (150° C) MAX OPERATING TEMP
B. #8 AWG STRANDED COPPER WIRE
- PACKAGE QTY: STD. PKG. -Q=25
BULK PKG. -T=200
- MATERIAL:
A. STAMPING - .040" (1.02) THK COPPER,
TIN PLATED
- DIMENSIONS IN BRACKETS ARE IN MILLIMETERS
- INSTALLATION TOOL: CT-700
- WIRE STRIP LENGTH: 3/8 ^{+1/32}₋₀ (9.5 ^{+.8}₋₀)

* P8-8RN IS NOT UL LISTED OR CSA CERTIFIED



LISTED
587H
E52164



CERTIFIED
LR31212

| | | | | | | | | |
|-----|------|-----|-----|------------------------------------|---------|------|-----------|---|
| | | | | | | | A41215_05 | |
| 05 | 7/06 | DAW | DAW | ADDED P8-8RN | TR00153 | | | TINLEY PARK, ILLINOIS #8 BARREL NON-INSULATED RING TONGUE .280 (7.11) MAX. WIRE INSUL. DIAMETER |
| 04 | 1/01 | KMD | SKB | CAD FILE SPEC. WAS N41215AA_PCD_02 | 08938 | JAC | CCH | |
| 03 | 5/95 | MS | | UPDATED NOTES AND DIMENSIONS | 03320 | | | |
| 02 | 7-88 | DW | | REDRAWN WITH REVISIONS | | | | |
| REV | DATE | BY | CHK | DESCRIPTION | ECN # | CUST | PM | DRAWN BY DAW CHK'D SCALE NONE DRAWING NO. A41215 |