



## MRT6LH-L6

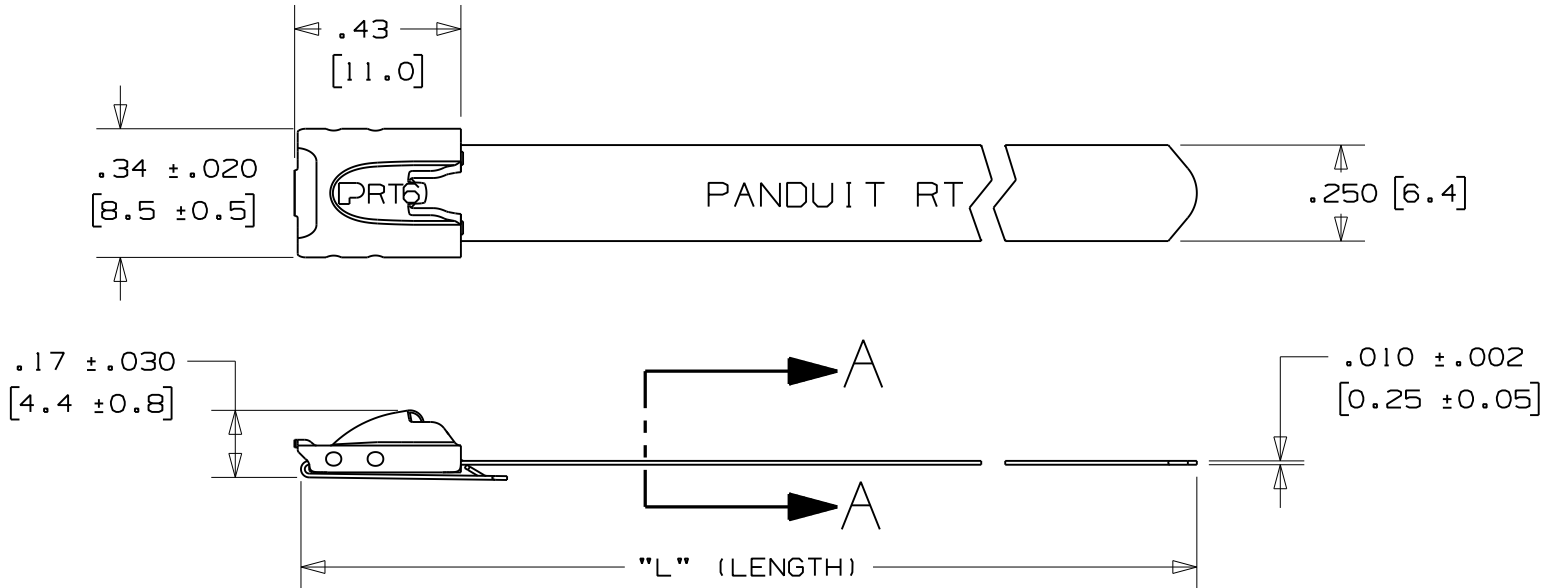


- Provide tight bundling of armored cables, pipes, conduit and other rigid materials in harsh conditions for a reliable, easy to install fastening solution
- Self-locking cable tie design locks into place at any length along the tie body, unlike fixed diameter band clamps
- Smooth surfaces and rounded edges assures cable protection and worker safety
- Available in AISI 304 stainless steel for general-purpose applications
- Available in AISI 316 stainless steel for the most corrosive environments

▪ Part Number	MRT6LH-L6
▪ RoHS Compliancy Status	Compliant
▪ Part Description	Retained tension, stainless steel cable tie, light-heavy, 6" (152mm) max. bundle diameter.
▪ Product Type	Cable Ties
▪ Material	Stainless Steel Type 316
▪ Length (In.)	23.8
▪ Length (mm)	604
▪ Width (In.)	.25
▪ Width (mm)	6.4
▪ Cross Section	Light-Heavy
▪ Max. Bundle Diameter (In.)	6.0
▪ Max. Bundle Diameter (mm)	152
▪ Min. Bundle Diameter (In.)	1.00
▪ Min. Bundle Diameter (mm)	25.4
▪ Min. Loop Tensile Strength (Lbs.)	225
▪ Min. Loop Tensile Strength (N)	1000
▪ Pricing Description	Retained Tension Tie, 316 SS, Light Heavy, 23.8" (604mm), .010" (.25mm) thk
▪ Thickness (In.)	.010
▪ Thickness (mm)	.25
▪ Tool	MTRTLS
▪ Min. Order UOM	PC
▪ Min. Order Qty.	50
▪ BOM Qty. (# of Pkgs.)	

THIS COPY IS PROVIDED ON A RESTRICTED BASIS AND IS NOT TO BE USED IN ANY WAY DETRIMENTAL TO THE INTERESTS OF PANDUIT CORP.

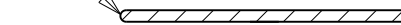
PANDUIT PART NO.	PACKAGE QTY.	MAX. BUNDLE DIAMETER	LENGTH "L" ±.3" [ 7 ]
MRT1.5LH-L6	50	1.5" [ 38 ]	9.7" [ 246 ]
MRT2LH-L6	50	2" [ 51 ]	11.3" [ 287 ]
MRT4LH-L6	50	4" [ 102 ]	17.6" [ 447 ]
MRT6LH-L6	50	6" [ 152 ]	23.8" [ 604 ]



NOTES:


- 1.) APPLICATION TOOLS - MRTTLS
- 2.) MINIMUM LOOP TENSILE STRENGTH - 225 LBS. (1000 NEWTONS) WHEN TESTED ON A 1.5" MANDREL.
- 3.) [ ] DENOTES DIMENSION IN MILLIMETERS
- 4.) TOLERANCES:  
 .XXX = ±.010 [ .25 ]  
 .XX = ±.02 [ .5 ]  
 .X = ±.03 [ .8 ]  
 ANGLES = ±2°
- 5.) MATERIAL: 316 STAINLESS STEEL

FULLY ROUNDED EDGES ALONG STRAP BODY



SECTION A - A  
SCALE 6:1

N41250BS\_DC/03A

03A	11/07	JAMB	EJD	ORIG.CAD FILE SPEC.& DWG.NO.WAS S41250_02 ADDED PART NO.MRT1.5LH-L6 TO PART TABLE	-----	 <b>PANDUIT</b> <sup>TM</sup> TINLEY PARK, ILLINOIS			
02	7/07	JMMR	EJD	APPLICATION TOOLS WERE MRTT1 & PRTT1	-----				
01	1/07	JAMB	EJD	REMOVED PARTS MRT8LH-L6 & MRT10LH-L6	SS00317	METAL TIE RETAINED TENSION - LIGHT/HEAVY SERIES 316 STAINLESS STEEL			
00	11/06	JAMB	EJD	DRAWING RELEASED	SS00266				
REV	DATE	BY	CHK	DESCRIPTION	ECN #	DRAWN BY JAMB	CHK'D EJD	SCALE 2:1	DRAWING NO. N41250BS_DC