



MRT1.5H-L4

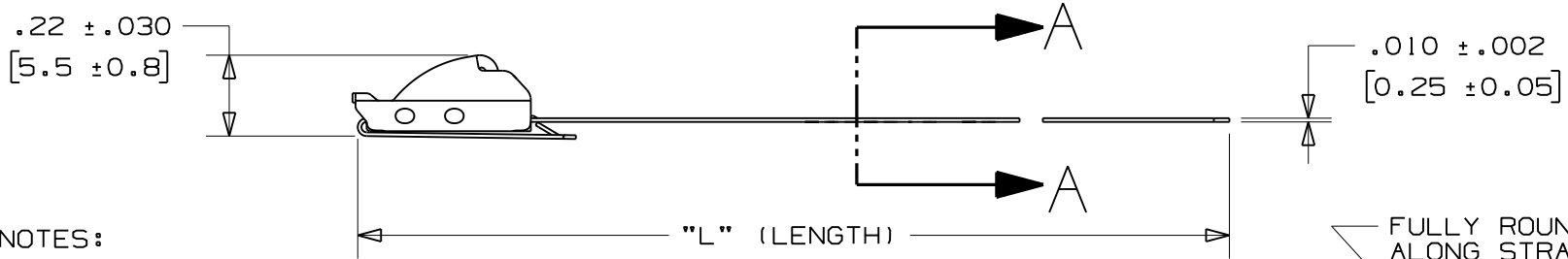
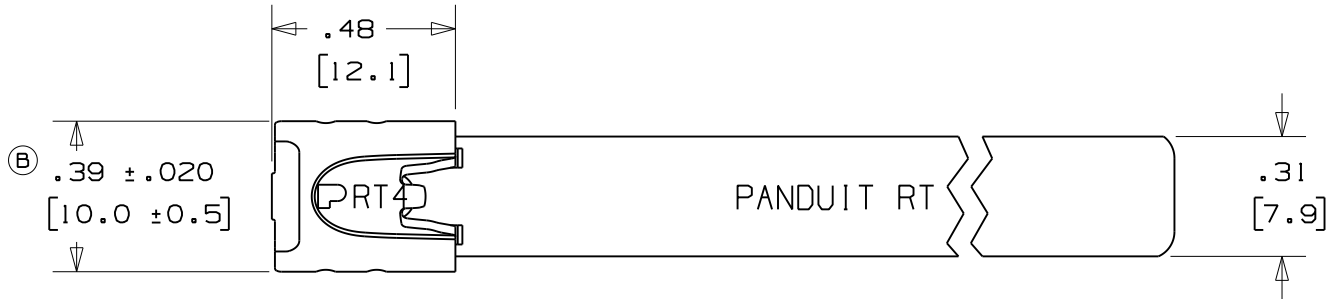


- Provide tight bundling of armored cables, pipes, conduit and other rigid materials in harsh conditions for a reliable, easy to install fastening solution
- Self-locking cable tie design locks into place at any length along the tie body, unlike fixed diameter band clamps
- Smooth surfaces and rounded edges assures cable protection and worker safety
- Available in AISI 304 stainless steel for general-purpose applications
- Available in AISI 316 stainless steel for the most corrosive environments

▪ Part Number	MRT1.5H-L4
▪ RoHS Compliancy Status	Compliant
▪ Part Description	Retained tension, stainless steel cable tie, light-heavy, 1.5" (38mm) max. bundle diameter.
▪ Product Type	Cable Ties
▪ Material	Stainless Steel Type 304
▪ Length (In.)	9.7
▪ Length (mm)	246
▪ Width (In.)	.31
▪ Width (mm)	7.9
▪ Cross Section	Heavy
▪ Max. Bundle Diameter (In.)	1.5
▪ Max. Bundle Diameter (mm)	38
▪ Min. Bundle Diameter (In.)	1.00
▪ Min. Bundle Diameter (mm)	25.4
▪ Min. Loop Tensile Strength (Lbs.)	400
▪ Min. Loop Tensile Strength (N)	1780
▪ Pricing Description	Retained Tension Tie, 304 SS, Heavy, 9.7" (246mm), .010" (.25mm) thk
▪ Thickness (In.)	.010
▪ Thickness (mm)	.25
▪ Tool	MTRTH
▪ Min. Order UOM	PC
▪ Min. Order Qty.	50
▪ BOM Qty. (# of Pkgs.)	

THIS COPY IS PROVIDED ON A RESTRICTED BASIS AND IS NOT TO BE USED IN ANY WAY DETRIMENTAL TO THE INTERESTS OF PANDUIT CORP.

PANDUIT PART NO.	PACKAGE QTY.	MAX. BUNDLE DIAMETER	LENGTH "L" $\pm .3$ " [7]
MRT1.5H-L4	50	1.5" [38]	9.7" [246]
MRT2H-L4	50	2" [51]	11.3" [287]
MRT4H-L4	50	4" [102]	17.6" [447]
MRT6H-L4	50	6" [152]	23.8" [604]




FULLY ROUNDED EDGES ALONG STRAP BODY

SECTION A - A
SCALE 6:1

NOTES:

- APPLICATION TOOLS - MTRTH
- MINIMUM LOOP TENSILE STRENGTH - 400 LBS. (1780 NEWTONS) WHEN TESTED ON A 1.5" MANDREL.
- BRACKETS [] DENOTES DIMENSION IN MILLIMETERS
- TOLERANCES:
 .XXX = $\pm .010$ [.25]
 .XX = $\pm .02$ [.5]
 .X = $\pm .03$ [.8]
 ANGLES = $\pm 2^\circ$
- MATERIAL: 304 STAINLESS STEEL

N41235BS_DC/03A

03A	6/07	JAMB	EJD	APPLICATION TOOLS WERE MTRT1 & PRT1	-----	 TINLEY PARK, ILLINOIS
02	1/07	JAMB	EJD	REMOVED PART NO'S. MRT8H-L4 & MRT10H-L4	SS00317	
01	11/06	JAMB	EJD	Ⓐ ADDED .500" TO THE LENGTH "L" TO ALL PART NO'S. IN TABLE. Ⓑ DIM .39" WAS .392"	SS00277	
00	10/06	JAMB	EJD	DRAWING RELEASED	SS00229	
METAL TIE RETAINED TENSION - HEAVY SERIES 304 STAINLESS STEEL						
REV	DATE	BY	CHK	DESCRIPTION	ECN #	DRAWN BY JAMB CHK'D EJD SCALE 2:1 DRAWING NO. N41235BS