



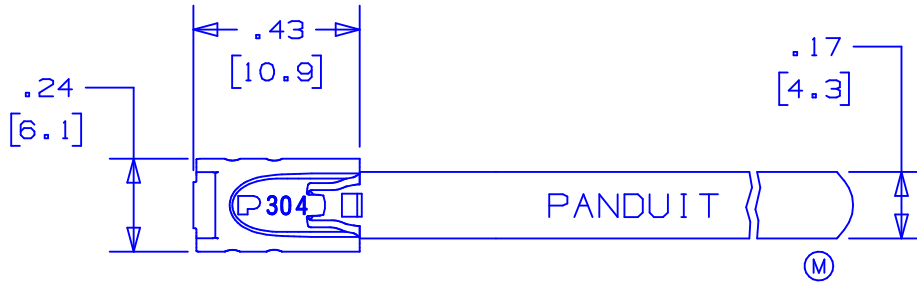
MLT6S-CP



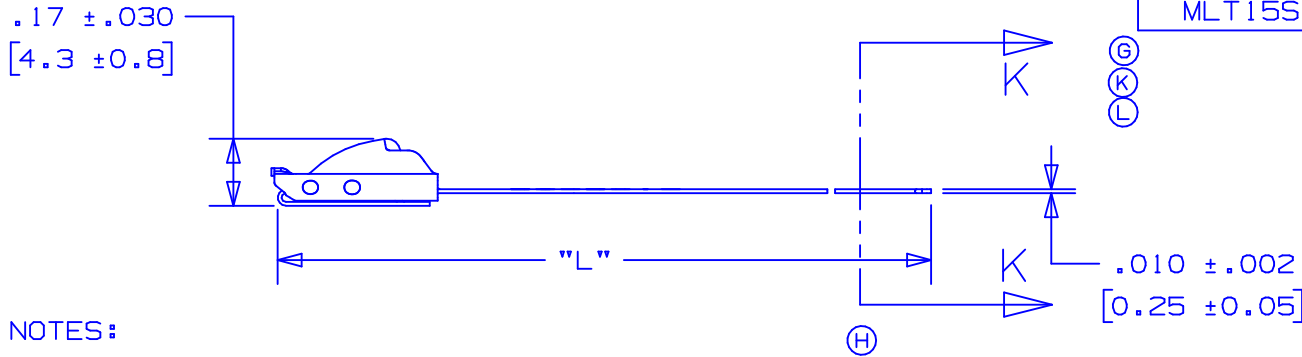
- The *Pan-Steel*® system provides a strong durable method of bundling and fastening. Stainless steel cable ties can be used in virtually all indoor, outdoor and underground (including direct burial) applications. They are especially well suited for network bundling of data and power cables. Their high strength, non-flammability, fully rounded edges and exclusive easy thread lead-in design provide the ultimate support for network cables.
- Self-locking head design speeds installation and locks into place at any length along the tie body
 - Provides a strong, durable method of cable bundling
 - Can be used in a wide range of indoor, outdoor, and underground (including direct burial) applications
 - Smooth surfaces and rounded edges assures cable protection and worker safety
 - Available in AISI 304 stainless steel for general-purpose applications
 - Available in AISI 316 stainless steel for the most corrosive environments
- Product Specifications
 - Material: Type 304 or 316 stainless steel
 - Temperature range: -112°F (-80°C) to 1000°F (538°C)
 - Water absorption: none
 - Flammability: non-flammable
 - Ultraviolet resistance: excellent
 - Chemical resistance: excellent
 - Radiation resistance: 2 x 10⁸ rads
 - Loop tensile strength range: 200-900 lbs. (890-4005N) (see chart for sizes)
 - Fully rounded edges and smooth surfaces
 - Estimated outdoor service life of 40 years

| | |
|------------------------------|--|
| ■ Part Number | MLT6S-CP |
| ■ RoHS Compliancy Status | Compliant |
| ■ Part Description | Stainless steel cable tie, standard, 6" (152mm) max bundle diameter. |
| ■ Product Type | Cable Ties |
| ■ Material | Stainless Steel Type 304 |
| ■ Color | natural |
| ■ UL Listed | Yes |
| ■ Length (In.) | 20.5 |
| ■ Length (mm) | 521 |
| ■ Width (In.) | .18 |
| ■ Width (mm) | 4.6 |
| ■ Cross Section | Standard |
| ■ Max. Bundle Diameter (In.) | 6.0 |
| ■ Max. Bundle Diameter (mm) | 152 |

| | |
|-------------------------------------|---|
| ■ Min. Bundle Diameter (In.) | .50 |
| ■ Min. Bundle Diameter (mm) | 12.7 |
| ■ Min. Loop Tensile Strength (Lbs.) | 200 |
| ■ Min. Loop Tensile Strength (N) | 890 |
| ■ Pricing Description | MLT Tie, 304 SS, Standard, 20.5" (521mm), .010" (.25mm) thk |
| ■ Thickness (In.) | .010 |
| ■ Thickness (mm) | .25 |
| ■ Tool | GS4MT, HTMT, PPTMT, ST2MT |
| ■ Min. Order UOM | PC |
| ■ Min. Order Qty. | 100 |
| ■ BOM Qty. (# of Pkgs.) | |

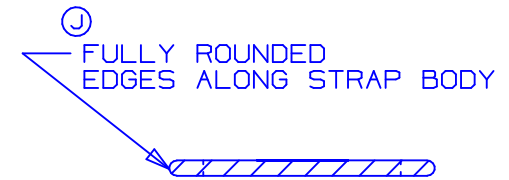


| PANDUIT PART NO. | MAX BUNDLE DIA. | PACKAGE QTY | LENGTH L ±.3 [7] ④ |
|------------------|-----------------|-------------|--------------------|
| MLT1S-CP | 1" [25] | 100 | 5.0" [127] |
| ② MLT2S-CP | 2" [51] | 100 | 7.9" [201] |
| ⑥ MLT2.7S-CP | 2.7" [69] | 100 | 10.2" [259] |
| ③ MLT4S-CP | 4" [102] | 100 | 14.3" [362] |
| MLT6S-CP | 6" [152] | 100 | 20.5" [521] |
| ⑤ MLT8S-CP | 8" [203] | 100 | 26.8" [679] |
| MLT10S-CP | 10" [254] | 100 | 33.0" [838] |
| MLT12S-Q | 12" [304] | 25 | 39.3" [998] |
| MLT14S-Q | 14" [355] | 25 | 45.5" [1156] |
| MLT15S-Q | 15" [380] | 25 | 49.2" [1250] |



NOTES:

- ① 1.) APPLICATION TOOLS - GS4MT, PPTMT, ST2MT, ST3MT, HTMT
- 2.) MINIMUM LOOP TENSILE STRENGTH - 200 LBS (889 NEWTONS) WHEN TESTED ON A 1.5" MANDREL.
- 3.) [] DENOTES DIMENSION IN MILLIMETERS
- 4.) TOLERANCES:
 .XXX = ±.010 [.25] .XX = ±.02 [.5]
 .X = ±.03 [.8] ANGLES = ±2°
- 5.) MATERIAL: 304 STAINLESS STEEL



SECTION K - K

SCALE: 8x

| | | | | | | | |
|-----|-------|------|-----|---|-------|-----|------|
| 06 | 3/05 | JAMB | BJO | ① OLD TIP CONFIGURATION REPLACED WITH NEW TIP CONFIGURATION | 12491 | CCH | JJB |
| 05 | 11/04 | JMMR | EJD | ④ REMOVED PART NO. MLT16S-Q FROM TABLE | 12192 | CCH | JJB |
| 04 | 10/04 | JAMB | EJD | ⑥ ADDED PART NO. MLT16S-Q TO TABLE. | 12179 | CCH | JJB |
| 03 | 8/04 | JAMB | DPN | ③ REMOVED "AISI NO.1 FULL RADIUSED" & REPLACED WITH "FULLY ROUNDED" | 11907 | CCH | JJB |
| 02 | 8/04 | JAMB | DPN | ② ADDED APPLICATION TOOL "ST3MT" | 11292 | CCH | JJB |
| 01 | 6/03 | JAMB | DPN | ① MIN LOOP TENSILE STRENGTH WAS 100 LBS. (445 NEWTONS) ② MAX. BUNDLE DIA. [mm] WAS [50] ③ MAX. BUNDLE DIA. [mm] WAS [101], LGTH. WAS 14.2 [361] ④ TOL. WAS ±.2 [5] ⑤ LGTH. [mm] WAS [681] ⑥ MAX. BUNDLE DIA. [mm] WAS [68] ⑦ REMOVED PART NO. MLT16S-Q | 10568 | CCH | JJB |
| REV | DATE | BY | CHK | DESCRIPTION | ECN # | PM | CUST |

PANDUIT

CORP.

TINLEY PARK, ILLINOIS

METAL LOCKING TIE
STANDARD SERIES-304 STAINLESS STEEL

| | | | |
|------------------|--------------|-------------|-----------------------|
| DRAWN BY JAMB | CHK'D DPN | SCALE 2x | DRAWING NO. S41119 |
|------------------|--------------|-------------|-----------------------|

S41119_06